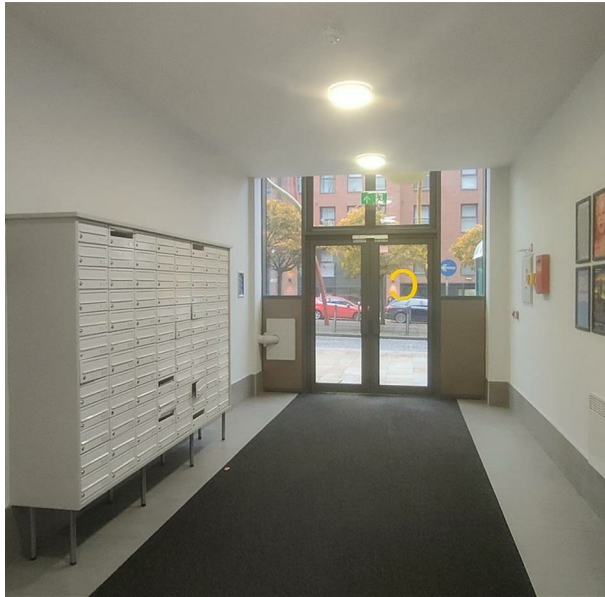


2 Slater Place, Liverpool, L1 4EY
£900 Per Month
Council Tax Band: A



Apt 306, 2 Slater Place, Liverpool, L1 4EY
 Rent: £900 PCM (Bills Excluded) | Deposit: £900
 Available: 15th July | Students & Professionals Welcome

Key Features:

Prime L1 Location: Situated in the vibrant heart of Liverpool One / Ropewalks.
Modern Layout: 1 double bedroom, 1 sleek bathroom, and a bright open-plan lounge and kitchen.
High Spec: Fully fitted kitchen with integrated appliances, including a washing machine.
Contemporary Finish: Calming white colour scheme contrasted with modern dark wood flooring.
Building Benefits: Third-floor position with secure intercom access and lift service.

Property Description:

A stylish and spacious one-bedroom apartment ideally located at Slater Place. Just a short walk from Bold Street, Seel Street, and Liverpool Central Station, this modern property is perfect for young professionals and students looking for premium urban living.

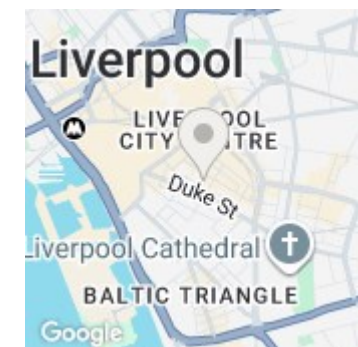
The apartment offers a bright, open-plan kitchen and living space with contemporary fittings and ample storage. The large double bedroom serves as a peaceful retreat, beautifully finished with modern styling. A sleek bathroom with a walk-in shower completes the space. With large windows and a Juliet balcony offering exceptional city views and natural light, this is city living at its best.

Location Highlights:

0.2 miles to Bold Street & Liverpool Central Station
 0.4 miles to Liverpool Lime Street Station



Open House Liverpool



Energy Efficiency Rating		
	Current	Potential
Very energy efficient - lower running costs		
(92 plus) A		
(81-91) B	88	
(69-80) C		
(55-68) D		
(39-54) E		
(21-38) F		
(1-20) G		
Not energy efficient - higher running costs		
England & Wales	EU Directive 2002/91/EC	