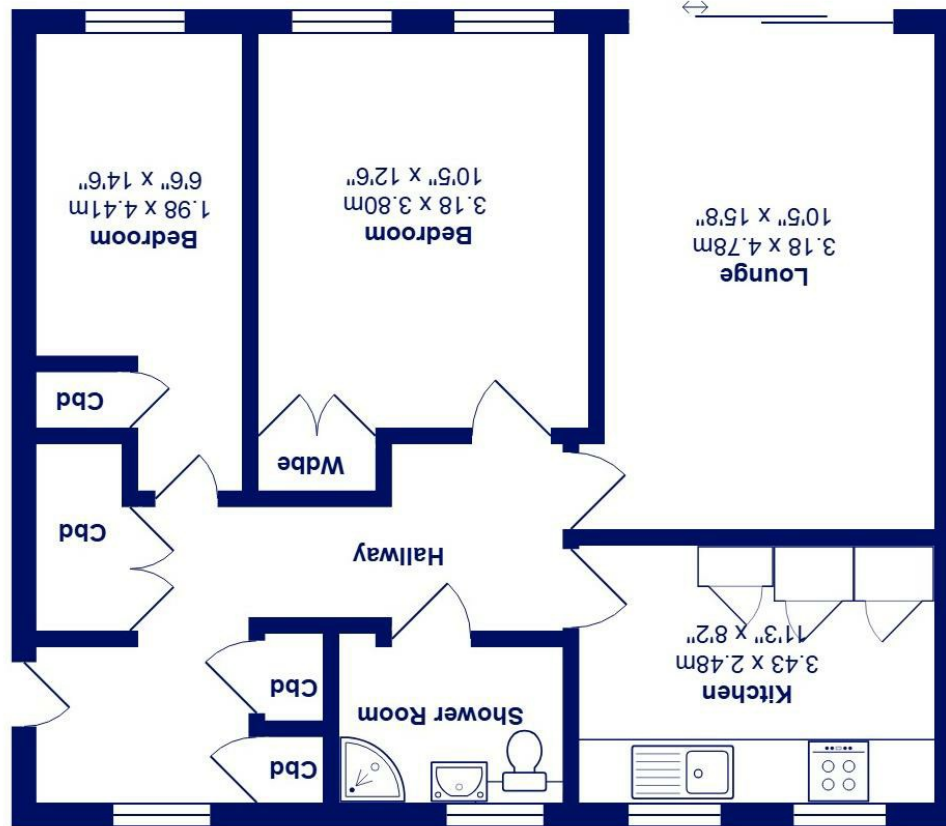




All measurements are approximate and for display purposes only
Total Area: 60.7 m² ... 653 ft²



Heat-Loss Perimeter: 23.5m ... 77ft



Flat 1, Windsor Court Waterford Place, BH23 5HY

£230,000

Mitchells
1963 — TODAY

A well presented ground floor flat right by the beach and the shops with direct access onto the West facing communal grounds and gardens. Fully refurbished in recent years with quality fittings throughout this bright and airy flat features a refitted kitchen and shower room, excellent storage and is decorated in excellent taste. Located on the South side of the main Lymington Road within walking distance of all the local amenities and beaches.

- Ground floor flat of approx 673sqft
- Two good size bedrooms
- Light & bright sitting room with doors onto the patio area and communal gardens
- Refitted shower room with oversized shower cubicle
- Gas fired central heating & Upvc double glazing
- Lovely West facing park-like communal grounds & gardens
- Casual car parking, short stroll to shops and beach
- Single garage in nearby block

EPC Rating Band:
Council Tax Band: C
Leasehold

Successful buyers will be required to complete online identity checks provided by Lifetime Legal. The cost of these checks is £48 inc. VAT per purchase which is paid in advance, directly to Lifetime Legal. This check verifies your identity in line with our obligations as stipulated by our regulatory body, HMRC

