



# MILE



## Blackdown Close, London £1,500 pcm %tenure%

Mile are delighted to offer this well-presented one-bedroom apartment set within a quiet cul-de-sac in East Finchley.

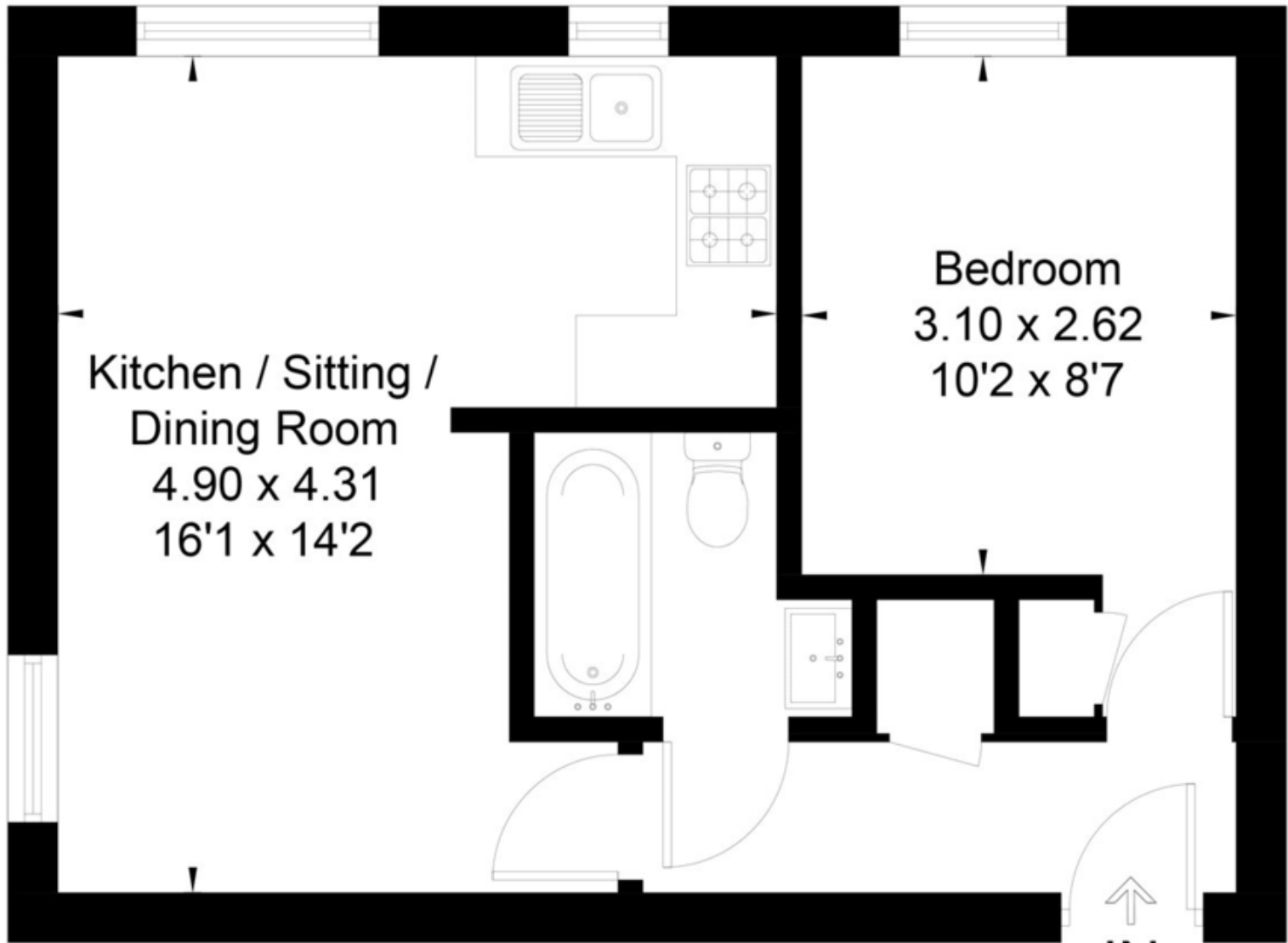
This bright and comfortable property offers a spacious reception room, fitted kitchen, double bedroom, and a modern bathroom. Ideally located close to East Finchley Underground Station and local amenities, making it perfect for professionals or couples.

Available Now

- One double bedroom
- Spacious reception room
- Fitted kitchen
- Modern bathroom
- Quiet residential location
- Close to transport links
- Parking Available
- Good local amenities nearby
- Available Now
- EPC Rating C

# BLACKDOWN CLOSE, N2

Approximate Floor Area = 35.3 sq m / 380 sq ft



## Second Floor

↑  
IN

**MONEY LAUNDERING REGULATIONS 2003:** Intending purchasers will be asked to produce identification documentation at a later stage and we would ask for your co-operation in order that there will be no delay in agreeing the sale.

**General:** While we endeavour to make our sales particulars fair, accurate and reliable, they are only a general guide to the property and, accordingly, if there is any point which is of particular importance to you, please contact the office and we will be pleased to check the position for you, especially if you are contemplating travelling some distance to view the property.

**Measurements:** These approximate room sizes are only intended as general guidance. You must verify the dimensions carefully before ordering carpets or any built-in furniture.

**Services:** Please note we have not tested the services or any of the equipment or appliances in this property, accordingly we strongly advise prospective buyers to commission their own survey or service reports before finalising their offer to purchase.