



Rutland Drive, SM4

£595,000

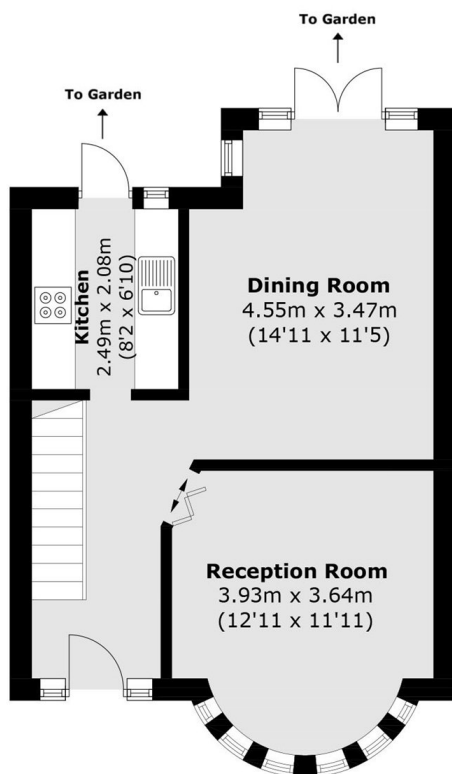
An opportunity to purchase a fantastic four bedroom family home situated on a popular residential cul-de-sac. Presented in good condition throughout, the house offers potential for further expansion on the ground floor, subject to planning.

Rutland Drive is a popular residential road located close to a number of local stations, with quick access into London by Bus, Rail and Tube. Other attractions and amenities close by are Morden Park, Cannon Hill Common, Morden Primary School, Merton Technical College and Merton Leisure Centre

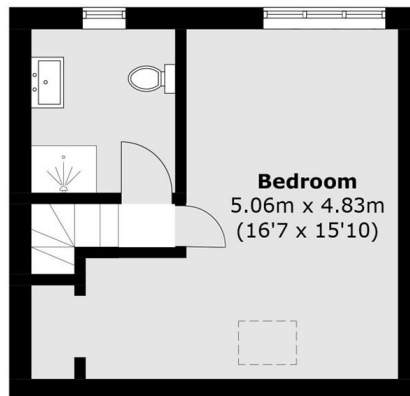
Features

- Four Bedrooms
- Two Bathrooms
- Landscaped Garden
- Off Street Parking
- Rear Access
- Potential to Extend

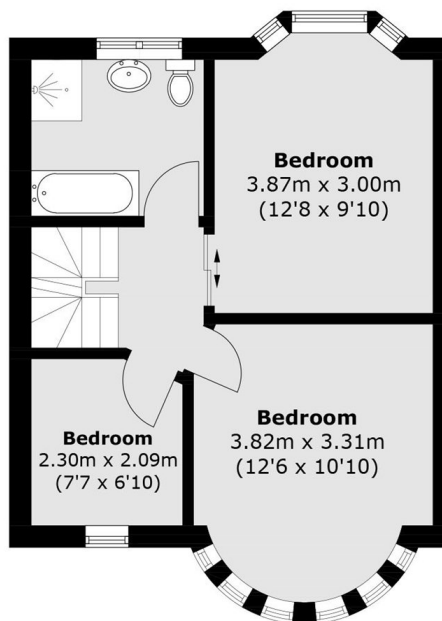
Rutland Drive, Morden, SM4



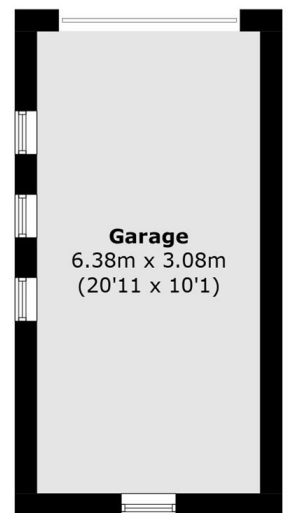
Ground Floor



Second Floor



First Floor



(Not Shown In Actual
Location / Orientation)

Total area (approx.): 104.0 sq. m (1,119.3 sq. ft)
Garage (approx.): 19.6 sq. m (210.9 sq. ft)