
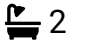



18 Bryn Twr, Rhuddlan, LL18 6JB

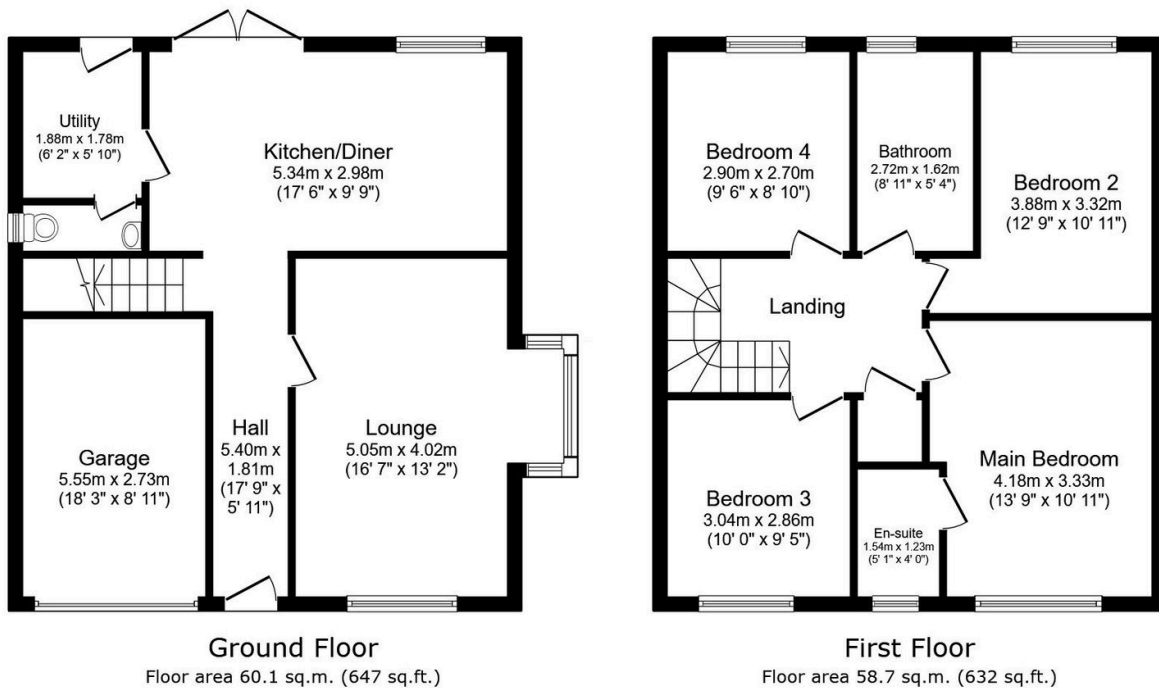
£340,000

 4  2  1



This modern detached four-bedroom house in Rhuddlan is ideally suited to families seeking spacious, well-presented accommodation in a sought-after location. Constructed approximately five years ago, the property offers a generous reception room, kitchen with defined dining area for family meals, utility room and ground floor cloaks. Four bedrooms, offering flexibility for children, guests or a home office with the principal bedroom benefitting from an en-suite shower room and built-in wardrobes, and family bathroom. Outside, there is an enclosed rear garden with a sunny aspect, ideal for outdoor play and entertaining, together with an attached single garage and driveway parking. The historic town of Rhuddlan offers a range of quaint shops, cafés and everyday services, with further facilities available in nearby Rhyl. Families benefit from access to nearby schools and green spaces, including riverside walks along the Clwyd and local parks.

- Modern detached family home
- Light, spacious reception room
- Separate utility room
- Detached garage and driveway parking
- Freehold / EPC - B / Fire sprinkling system
- Four bedrooms including en-suite
- Kitchen with family dining area
- Enclosed sunny rear garden
- Sought-after Rhuddlan location
- Date 02/01/2026 P/R 20/01/2026 P/R 27/02/2026 P/R 05/05/2026



Total floor area: 118.8 sq.m. (1,279 sq.ft.)

This floor plan is for illustrative purposes only. It is not drawn to scale. Any measurements, floor areas (including any total floor area), openings and orientations are approximate. No details are guaranteed, they cannot be relied upon for any purpose and do not form any part of any agreement. No liability is taken for any error, omission or misstatement. A party must rely upon its own inspection(s). Powered by www.Propertybox.io