

Urlwin Street, SE5

£550,000

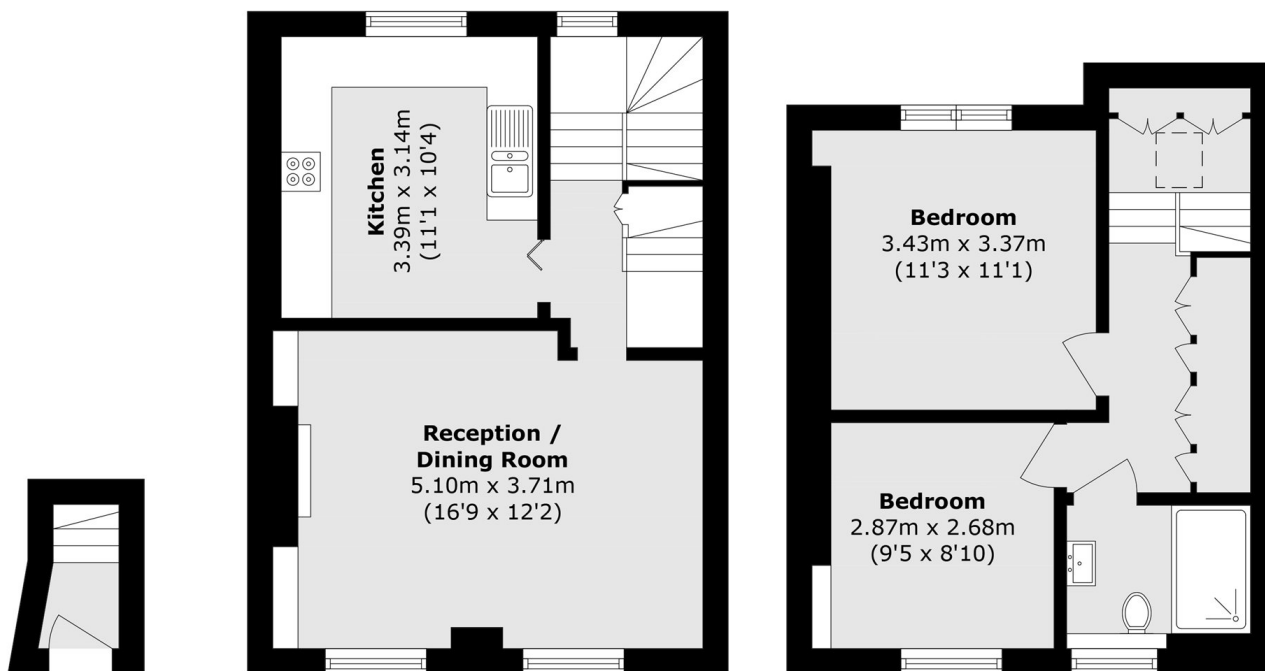
A beautifully presented split-level home, finished to an exceptional standard while retaining much of its original character and charm. The property boasts a spacious reception room with delightful front-facing views, offering a versatile layout that comfortably accommodates both living and dining areas. The separate kitchen is stylishly designed, ideal for those who enjoy cooking, with ample worktop space and generous storage. Upstairs, the first floor features two well proportioned double bedrooms, complemented by a thoughtfully designed modern bathroom.

Picturesque Urlwin Street is quietly located between two fantastic green spaces, Burgess Park and Kennington Park. Conveniently positioned within walking distance of both Kennington and Oval tube stations (Northern Line) and Elephant & Castle (Northern & Bakerloo lines). The property is just moments from a vast array of local amenities which provide a real hub of activity for the local community.

Features

- Two Bedrooms
- Split Level
- Excellent Condition
- Wonderful Location
- Healthy Lease
- Separate Kitchen

Urlwin Street, London, SE5



Ground Floor

First Floor

Second Floor

Total area (approx.): 71.2 sq. m (766.3 sq. ft)