



Primrose Gill Gill Head Flimby, Maryport CA15 8SU

Bungalow - Detached



3



2



1



49



GRISDALES

PROPERTY SERVICES

£320,000

Key Highlights

- Peacefully positioned in a sought-after rural setting, offering a quieter pace of life while remaining within easy reach of local towns, schools and shops
- Three well-proportioned bedrooms providing comfortable accommodation for families, guests or home working.
- A rare opportunity to acquire a home offering generous indoor accommodation.
- A very generous, fully secure, private garden provides plenty of room for outdoor dining, gardening, or simply enjoying the peaceful surroundings. A separate mini woodland to the side of the property is already equipped with a large children's play area.
- An ideal family home combining generous living accommodation with large outdoor space.
- Ample off-road parking for multiple vehicles.
- Garage and outside studio space offering outstanding flexibility for hobbies, storage, tradespeople or those looking to run a business from home (subject to any necessary consents).

[GRISDALES.CO.UK](https://www.grisdales.co.uk)

Primrose Gill Gill Head, Maryport



Primrose Gill Gill Head, Maryport



Welcome to Primrose Gill, Gill Head, Maryport

Enjoying a peaceful rural setting, this delightful three-bedroom home offers the best of both worlds – a relaxed countryside feel with the convenience of local towns, schools, everyday amenities all within easy reach, making it an ideal choice for growing families.

Inside, the property has been designed with family life in mind. A welcoming living room provides a comfortable space to relax together, while the generous kitchen/dining room forms the heart of the home, offering plenty of room for busy mornings, family meals and entertaining friends. Three well-proportioned bedrooms offer comfortable accommodation for families of all ages.

Outside, the property continues to impress. The substantial private garden provides an incredible space for children to play, summer barbecues with family and friends, gardening enthusiasts or simply enjoying the peace and privacy that surrounds the home. A large double detached garage has been split into 2 useful spaces, and now provides excellent storage in the front half, and a fantastic, flexible studio space to the rear, each with their own access. The studio space is fully insulated, featuring downlights, multiple electric points and plenty of natural light. It is currently utilised as a craft studio, but would lend itself exceptionally well to use as a home gym, office space, cinema room or simply for clean and dry extra storage. There is a mains water supply in the garage which adds possibilities for future development. Ample off-road parking comfortably accommodates multiple vehicles, adding further practicality for modern family life.

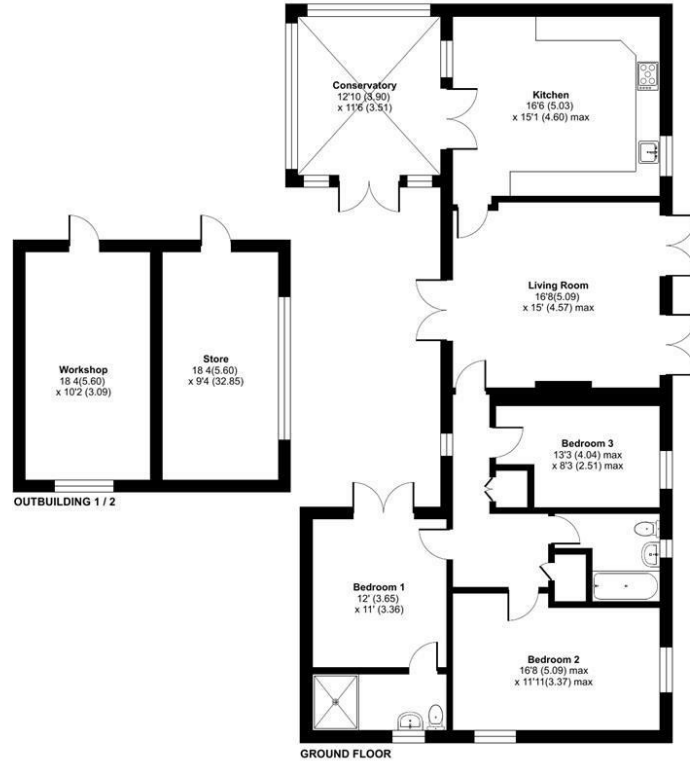
Offering generous living space both inside and out, together with a wonderful rural location that doesn't compromise on convenience, this is a home where family memories can be made for many years to come.

Floorplan



Primrose Gill, Gill Head, Maryport, CA15

Approximate Area = 1314 sq ft / 122 sq m
Outbuilding = 357 sq ft / 33.1 sq m
Total = 1671 sq ft / 155.1 sq m
For identification only - Not to scale



Floor plan produced in accordance with RICS Property Measurement 2nd Edition, incorporating International Property Measurement Standards (IPMS2 Residential). © nichcom 2026. Produced for Gridsdates. REF: 1481727

Total Floor Area:
1671.00 sq ft

THINGS YOU NEED TO KNOW

The property is Freehold and benefits from LPG gas, electric and water services. There is a newly installed boiler.

The property has a water meter located to the front of the property.

The property has a septic tank located in the garden; this is up to date with regulations.

DIRECTIONS

W3W://squaring.sneezed.flagpole

MORE SPACE THAN YOU COULD EVER IMAGINE

Behind its welcoming frontage lies a home designed for everyday living, where generous room sizes and a practical layout create a relaxed and comfortable environment. The accommodation includes three well-proportioned bedrooms, a spacious living room, a spacious kitchen/dining room that naturally becomes the hub of the home, and a light-filled conservatory offering uninterrupted views across the garden.

The grounds are what truly set this property apart. Extending well beyond the house, the large private garden provides a wonderful sense of space and seclusion, with endless possibilities for gardening, entertaining, family life or simply enjoying the outdoors with the simply stunning views and sunsets. A large sandstone patio and raised decking area provides great places to sit back and relax. For those with green fingers there is a small allotment with herb beds, fruit bushes and a wildflower bed. A workshop and garage offer exceptional flexibility, whether for running a business, pursuing creative projects or accommodating larger equipment. Ample off-road parking ensures practicality matches the property's impressive scale. Properties that combine such generous internal accommodation with outdoor space of this size and versatility are increasingly uncommon, making this a home that can easily adapt to changing lifestyles for many years to come.

LOCAL COMMUNITY

CA15 postcodes are generally centered around Maryport and surrounding coastal and rural villages, offering a traditional seaside community with a strong maritime heritage and easy access to both the Solway Coast and the western Lake District. The specific area for this charming bungalow is located closer to areas or Camerton and Seaton, offering a wonderful community feel with rural walks and views as you head over to Camerton. Education is well served with schools including Seaton Infant and Junior School, Flimby School alongside local secondary schools. Healthcare services and additional facilities are also available locally.









Location



Energy Performance

Energy Efficiency Rating		
	Current	Potential
Very energy efficient - lower running costs		
(92 plus) A		
(81-91) B		
(69-80) C		
(55-68) D		62
(39-54) E	49	
(21-38) F		
(1-20) G		
Not energy efficient - higher running costs		
England & Wales	EU Directive 2002/91/EC	

Environmental Impact (CO ₂) Rating		
	Current	Potential
Very environmentally friendly - lower CO ₂ emissions		
(92 plus) A		
(81-91) B		
(69-80) C		
(55-68) D		
(39-54) E		
(21-38) F		
(1-20) G		
Not environmentally friendly - higher CO ₂ emissions		
England & Wales	EU Directive 2002/91/EC	

Additional Information

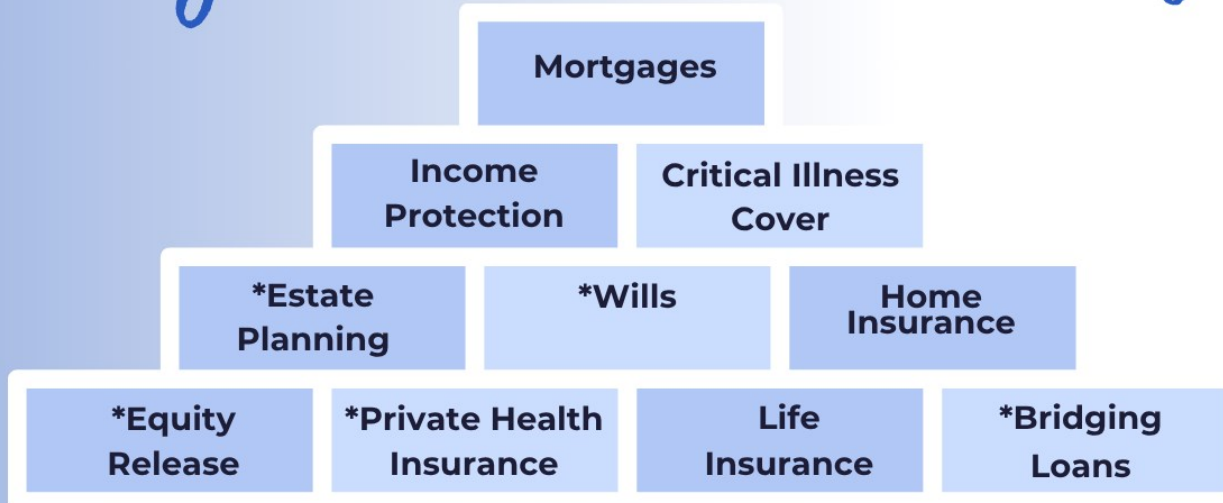
Tenure: Freehold Council: CUMBERLAND Tax Band: E

Please Note:

These particulars, whilst believed to be accurate are set out as a general outline only for guidance and do not constitute any part of an offer or contract. Intending purchasers should not rely on them as statements of representation of fact, but must satisfy themselves by inspection or otherwise as to their accuracy. No person in this firms employment has the authority to make or give any representation or warranty in respect of the property.



All your needs under one roof



*Advice in these areas will be referred to a specialist

Meet the team

 **01900 829977**

 **01946 693931**

 **cockermouth@grisdales.co.uk**

 **whitehaven@grisdales.co.uk**

-Cockermouth

-Whitehaven



The advice will be given by the right retirement plan limited

The Right Advice Cumbria (Bulman & Pollard) is a trading style of The Right Retirement Plan Limited which is an appointed representative of The Right Mortgage Limited, which is authorised and regulated by the Financial Conduct Authority. Head Office: St Johns Court, 70 St Johns Close, Knowle, Solihull, B93 0NH. Registered in England & Wales no. 13502665

Contact Us

Cockermouth Branch
A: 18 South Street, Cockermouth,
Cumbria, CA13 9RT
T: 01900 829 977
E: cockermouth@grisdales.co.uk

Just viewed this home?

Tell us how we did. Scan the QR
code to leave your review.

