



33 Abbey Wharf, Mill Road, Shrewsbury, SY2 6AY

2 bedroom apartment — £169,995 Leasehold

33 Abbey Wharf, Mill Road, Shrewsbury, SY2 6AY

Coopergreenpooks.co.uk

£169,995 Leasehold — 2 bedroom apartment

sales@cgpooks.co.uk

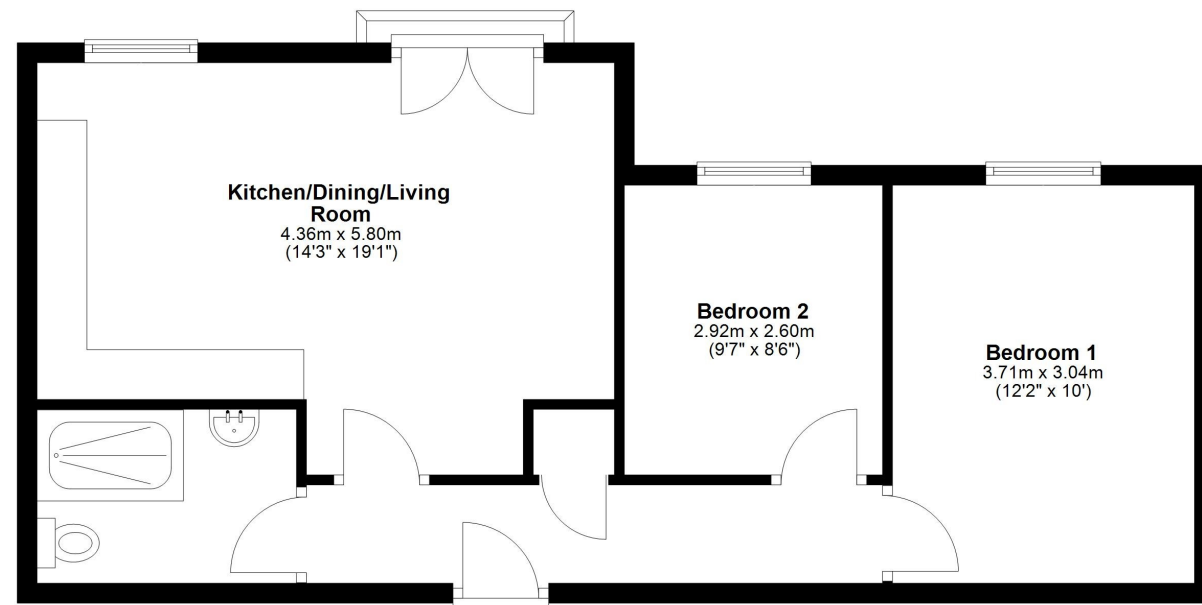
Occupying a fantastic position with stunning views over the Reabrook Conservation Area, this beautifully presented second floor apartment offers thoughtfully designed accommodation throughout, while benefitting from lift access, private allocated parking, and attractively landscaped communal gardens.

KEY FEATURES

- Neatly kept communal entrance hall with staircase and lift access to the second floor
- Good sized inner hallway with useful storage
- Impressive open plan kitchen/dining/living room with Juliette balcony offering views over the conservation area, communal gardens, and towards the town centre
- A range of well-fitted units to the kitchen, with integrated appliances and space for fridge/freezer
- Two double bedrooms, one currently used as a home office/dressing room, both of which have views to the rear
- The separate family shower room has been stylishly designed with a large walk-in cubicle and rainwater shower head
- Energy efficient double-glazed windows and electric heating
- A great location within a quiet and attractive modern development, just a short walk from the town centre, as well as good local pubs/restaurants, supermarkets, and butcher/delicatessen. With the communal gardens adjoining the conservation area, there is also direct access to lovely walks and opportunities to spot plenty of wildlife including deer
- As an incentive to a buyer, the vendors would be willing to pay for the next years' service charge, subject to negotiation
- Private allocated parking and use of the communal gardens and bin store

Second Floor

Approx. 53.8 sq. metres (579.4 sq. feet)



Total area: approx. 53.8 sq. metres (579.4 sq. feet)









33 Abbey Wharf, Mill Road, Shrewsbury, SY2 6AY

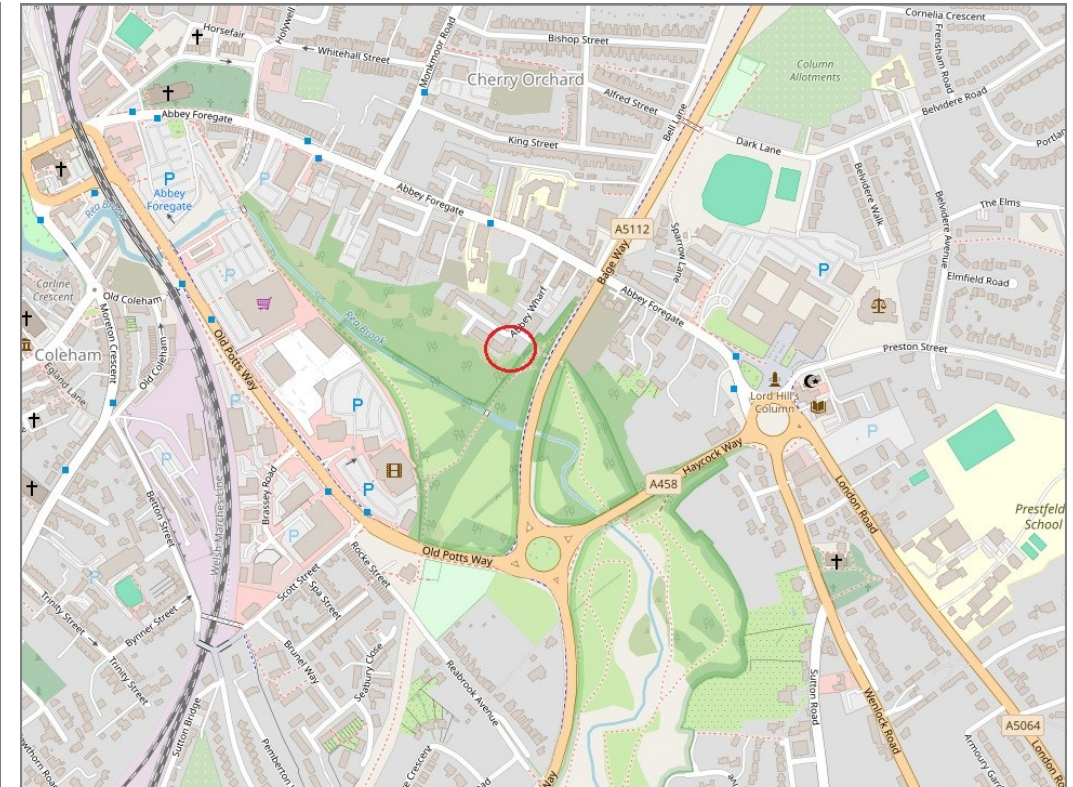
£169,995 Leasehold — 2 bedroom apartment

sales@cgpooks.co.uk

rightmove

onTheMarket.com

RICS®
Regulated by RICS



BOUNDARIES NOT CONFIRMED

Tenure	Leasehold
Local Authority	Shropshire Council
Council Tax	Band B
EPC Band	Band B
Services	Mains water, electricity and drainage are connected. Electric heating.

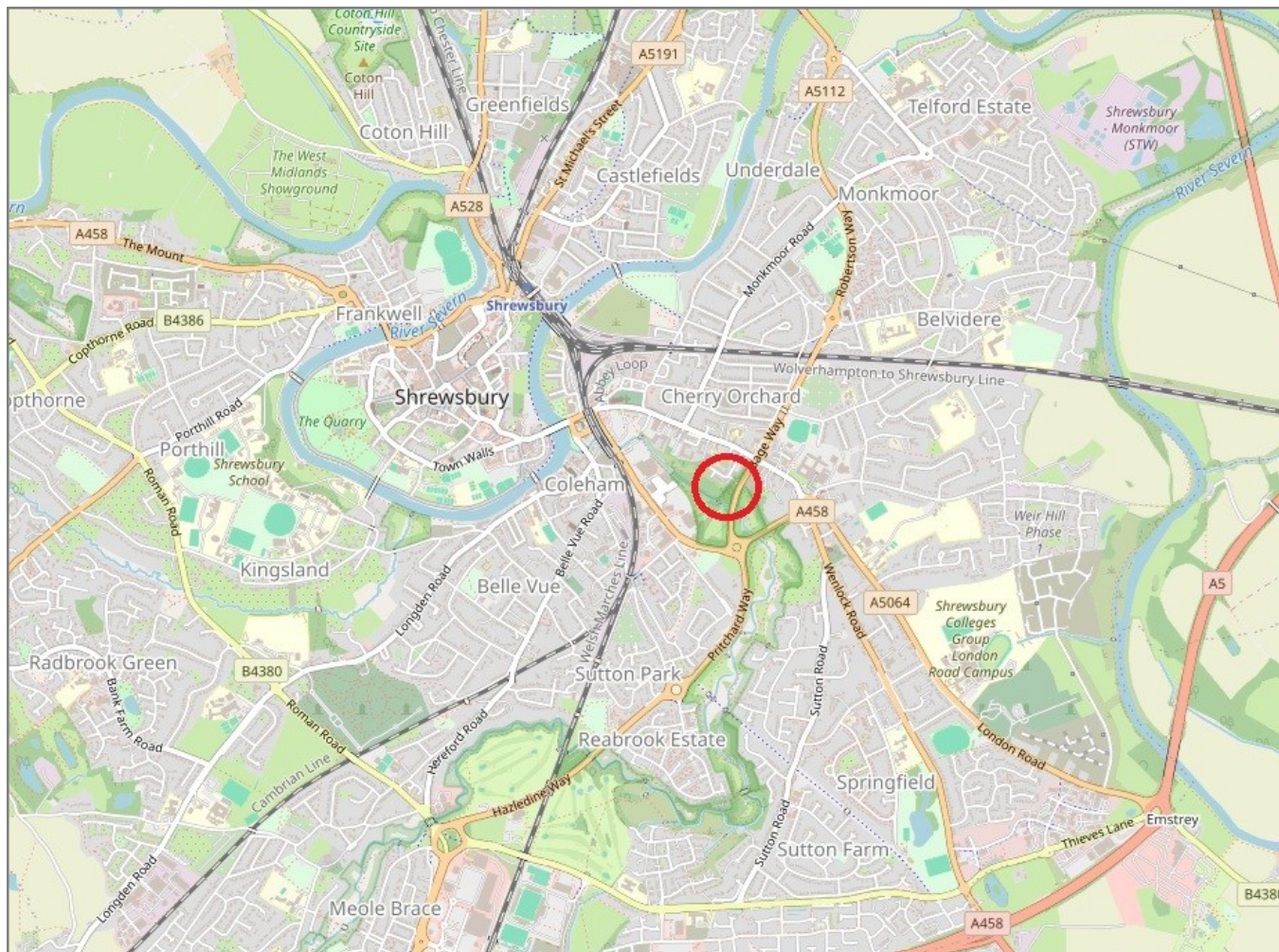
Length of lease	250 years
Start of lease	2013
Service charge	£235 p/m—including ground rent

33 Abbey Wharf, Mill Road, Shrewsbury, SY2 6AY

Coopergreenpooks.co.uk

£169,995 Leasehold — 2 bedroom apartment

sales@cgpooks.co.uk



IMPORTANT NOTICE: Cooper Green Pooks for themselves and for the lessors or vendors of this property whose agents they are give notice that: 1 No appliances, services or service installations have been tested and no warranty as to suitability or serviceability is implied. Any prospective purchaser or lessee is advised to obtain verification from their surveyor or solicitor. 2. The particulars are set out as a general outline only for the guidance of the intended purchasers or lessees and do not constitute, nor constitute part of, an offer or contract. 3. All descriptions, reference to condition and necessary permissions for use and occupation and other details are given in good faith and are believed to be correct but any intending purchasers or lessees should not rely on them as statements or representation of fact but satisfy themselves by inspection or otherwise as to the correctness of each of them. 4. No person in the employment of Cooper Green Pooks has any authority to make or give any representation or warranty whatsoever in relation to this property. 5. All rentals and prices are quoted exclusive of Stamp Duty, legal and surveyors fees and any other associated purchasers or lessees costs. 6. Floor plans are indicative only and should not be relied on. 7. The plan showing the boundary of the property is indicative only and has not been checked against the legal title so should not be relied on. 8. All dimensions, floor areas and site areas are only approximate and should not be relied on. Dimensions are generally maximum room dimension.