

PARKER JAMES

ESTATES

Established since 1995



Bolsover Street

London W1W 5NQ

- Available 28th February
- Lower ground floor
- Private patio
- Kitchen/breakfast room
- Great Portland Street station walking distance
- Furnished
- Lift
- 64 sqm
- Mansion block
- Regent's Park nearby

£2,400 Per Month

Bolsover Street

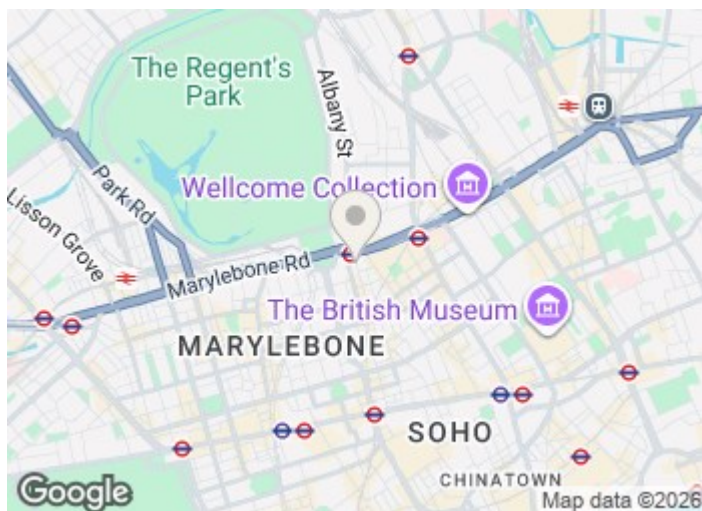
London W1W 5NQ



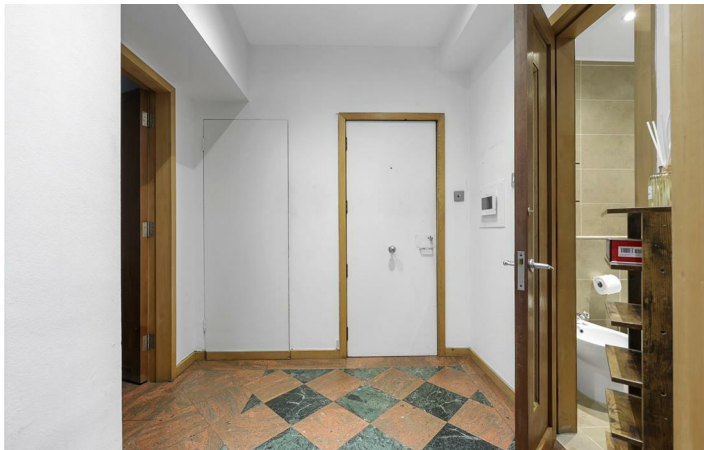
Available from the 28th of February on a fully furnished basis is this well presented lower ground floor flat with lift and private patio in Fitzrovia.

The 64 sqm property briefly comprises an entrance hall, reception room which is open plan to a fitted kitchen/breakfast room with integrated appliances and seating area, one double bedroom with a double glazed door opening onto a small patio garden.

Central Park Lodge is considered to be one of Fitzrovia's most prestigious mansion blocks and can be found halfway along Bolsover Street within walking distance of Great Portland Street (Circle line) and Regent's Park (Bakerloo) stations, bars and some of London's best regarded restaurants on and surrounding Charlotte Street whilst open space can be found nearby in glorious Regent's Park.



[Directions](#)





Floor Plan

These particulars, whilst believed to be accurate are set out as a general outline only for guidance and do not constitute any part of an offer or contract. Intending purchasers should not rely on them as statements of representation of fact, but must satisfy themselves by inspection or otherwise as to their accuracy. No person in this firms employment has the authority to make or give any representation or warranty in respect of the property.

