



## 2 Fosters Close, East Preston

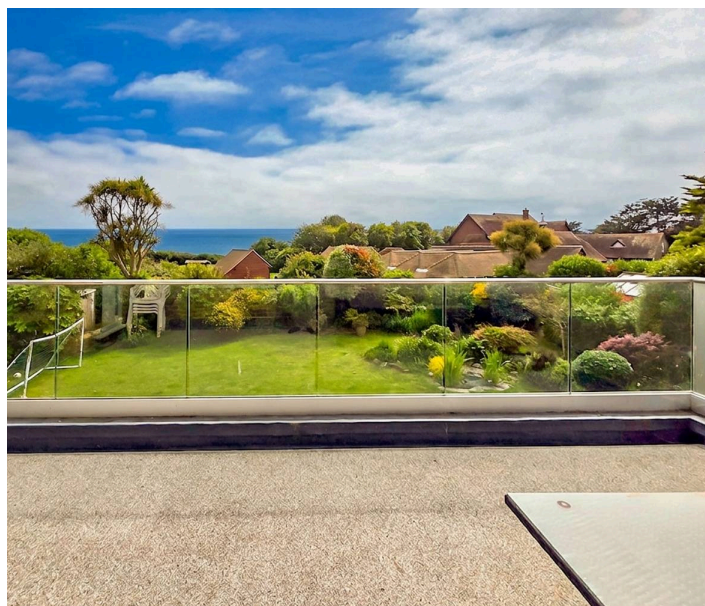
£1,350,000

Willowhayne Estate | Council Tax band: G | Tenure: Freehold | EPC Energy Efficiency Rating: C

## 2 Fosters Close

East Preston, Littlehampton

A beautifully presented detached coastal residence, positioned within the private Willowhayne Estate, just moments from the beach and enjoying direct sea views. This is a home that offers far more than simply space. It offers lifestyle, privacy and flexibility in equal measure. The ground floor is centred around an impressive open-plan kitchen, breakfast and family room, measuring over 28ft x 26ft. This is the true heart of the home, with a bespoke kitchen, feature central island, breakfast bar seating and a generous amount of space for both dining and relaxing. Large folding doors open directly onto the south-facing rear garden, creating a natural flow between the inside and outside space, ideal for entertaining, summer evenings and everyday family life. A striking spiral staircase rises from the kitchen/family room to the first-floor balcony terrace, giving the home a real sense of individuality and creating a direct link to one of its most impressive features – the sea view. The balcony offers a superb place to sit, dine or simply enjoy the coastal setting. The substantial L-shaped lounge/dining room, providing a more formal reception space while still feeling warm and inviting. With doors opening onto the garden and a feature fireplace with log burner, this room works beautifully throughout the seasons. A separate study/bedroom five, ground floor cloakroom and utility room add further practicality, with the utility also providing access into the integral double garage.



## 2 Fosters Close

East Preston, Littlehampton

The first floor continues the feeling of space and versatility. There are four bedrooms, three bath/shower rooms and an additional study/reading room, making the layout ideal for modern family living, working from home or hosting guests. The principal bedroom enjoys built-in wardrobes, an en-suite bathroom and a lovely sea view, while one of the additional bedrooms also benefits from its own en-suite facilities. The reading room is a particularly special space, with a large picture window framing the outlook towards the sea and access onto the sun balcony terrace. Whether used as a quiet study, library, sitting area or occasional guest space, it is one of the features that makes this home feel truly different. Outside, the south-facing rear garden is mainly laid to lawn with a patio seating area, offering a private and manageable space to enjoy. To the front, a generous driveway provides ample parking and leads to the integral double garage, which also benefits from additional loft storage above. Homes within the Willowhayne Marine Estate are always highly regarded, combining privacy, coastal living and convenience. With the beach nearby, local amenities within walking distance and the benefit of sea views, this is a rare opportunity to secure a substantial detached home in one of the area's most desirable private marine estates.

- Prestigious Private Willowhayne Marine Estate
- Detached Four-Bedroom Coastal Residence
- Three Reception Rooms & Two Study Areas
- Large Open-Plan Kitchen/Breakfast/Family Room
- South-Facing Rear Garden - First-Floor Sun



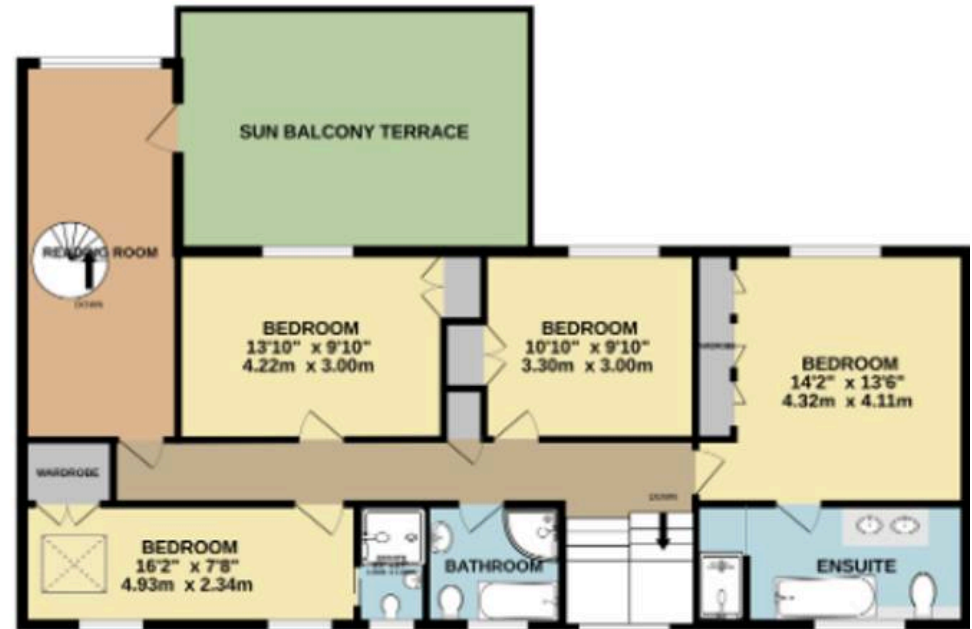




GROUND FLOOR



1ST FLOOR



You can include any text here. The text can be modified upon generating your brochure.