



Knaphill

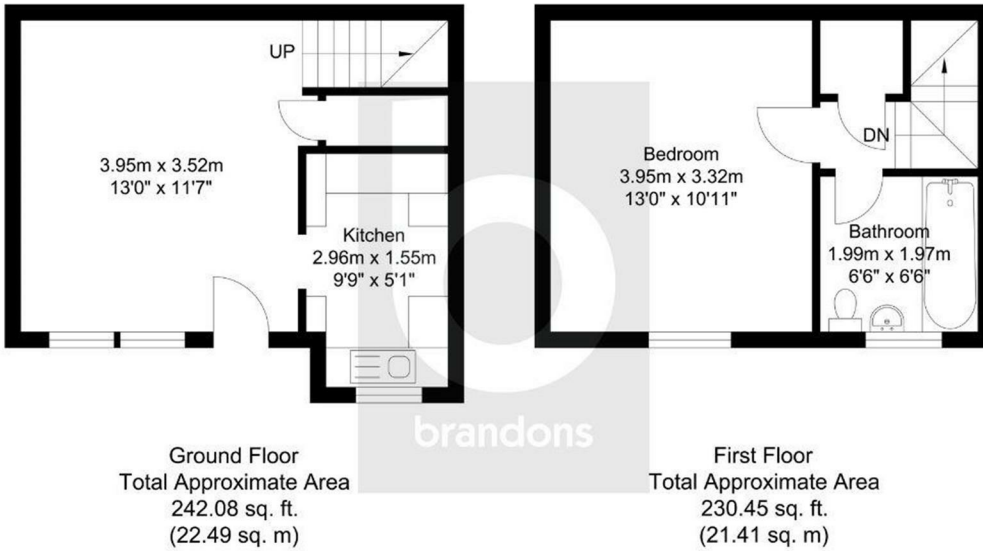
£229,950 Freehold

****No Chain **** This one bedroom terraced freehold starter home presents a fantastic opportunity for first time buyers, investors or those looking to put their own stamp on a property. The property is situated within a cul-de-sac and is well positioned for local amenities and transport links to Woking. Internally, the property offers a living area, a separate kitchen and a double bedroom, along with a bathroom. Externally, the property benefits from private garden space and residents parking.

Knaphill village has a good range of day-day shops, pubs and restaurants, which includes a Post Office. For more comprehensive shopping the Sainsbury's superstore is approximately quarter of a mile away. For commuters Brookwood station provides a regular service direct to London Waterloo, Woking and Guildford. For those who enjoy the outdoors, there is Brookwood Country Park, Sheets Heath and Basingstoke Canal close by which is ideal for dog walking or a family stroll. Council tax band -C

brandons

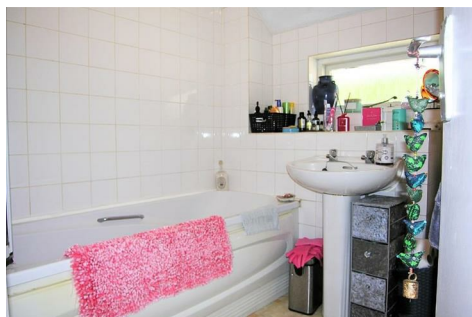
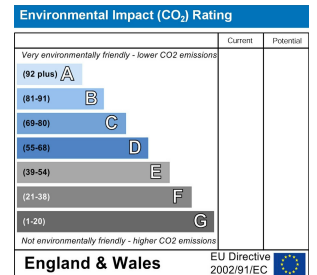
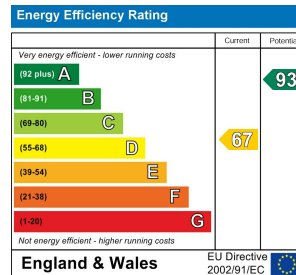
Overthorpe Close, Woking, GU21 2LA



Total Approximate Area
472.53 sq. ft.
(43.90 sq. m)

brandons residential estate agents have not tested any apparatus, equipment, fixtures or services so cannot verify they are in working order or fit-for-purpose. The buyer is advised to obtain verification from their solicitor or surveyor.

To arrange a viewing please contact brandons residential estate agents on 01483 798840 or email sales@brandonsmove.co.uk



www.brandonsmove.co.uk

these particulars should not form the basis of an offer or contract, although every care has been taken in the preparation, the accuracy is not guaranteed.

