

Buy. Sell. Rent. Let.



Roundway, Grimsby



When it comes to
property it must be


lovelle



£255,000



A characterful three-bedroom semi-detached house for sale in a popular Grimsby residential area, offering generous family accommodation with open-plan living, a modern kitchen and bathroom, a large landscaped garden, driveway, garage and car port, all within easy reach of local schools, amenities and transport links.

Key Features

- Semi-Detached House
- Traditional Features
- Three Bedrooms
- Open Plan Kitchen/Diner & Lounge
- Generous, Landscaped Garden
- Driveway, Car Port, Garage
- EPC rating D
- Tenure: Freehold



Lovelle offer to market this three-bedroom semi-detached house in a popular residential area of Grimsby, well placed for families seeking generous accommodation, a large garden gaining sun all day and convenient access to local amenities, schools and transport links.

The ground floor is arranged around a large, welcoming hall featuring characterful stained glass windows and stairs to the first floor. There is a useful cloakroom beneath the stairs with WC and sink. To the front, the main lounge enjoys a bay window and an open fire, providing a focal point and a comfortable living space. At the rear, an open-plan family dining room flows directly into the kitchen and out to the garden via French doors, creating a practical everyday living and entertaining area.

The kitchen offers modern units and worktops with a sink, oven and gas hob, and plumbing for both a washing machine and dishwasher. The open-plan layout with the family/dining area ensures a sociable, flexible space overlooking the garden.

On the first floor, there are three bedrooms. Bedroom one is a double room with bay window. Bedroom two is also a double, benefitting from built-in wardrobes. Bedroom three is a spacious single, again with built-in wardrobes, making good use of the available space. The bathroom is fitted with a modern suite, including a freestanding clawfoot roll-top bath, separate shower, WC and sink.

Outside, the property sits on a generous plot with a large, well-landscaped southwest facing garden. The garden is of a notable size, stocked with mature trees and plants, and laid out with lawn and decked areas. To the front and side there is a driveway, garage and car port, providing off-street parking and additional storage. The property also benefits from uPVC double glazing and gas central heating.

The location provides access to nearby schools, local amenities and public transport links into Grimsby town centre and surrounding areas. Grimsby Town railway station offers services towards Manchester, Sheffield and Cleethorpes, giving onward connections for commuting and leisure travel. Nearby parks offer green space for walking and recreation, adding to the appeal for families.

This semi-detached three-bedroom house combines characterful features with practical modern touches, a large garden and useful parking, in a setting convenient for day-to-day facilities in Grimsby.

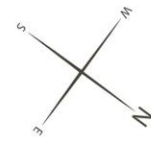
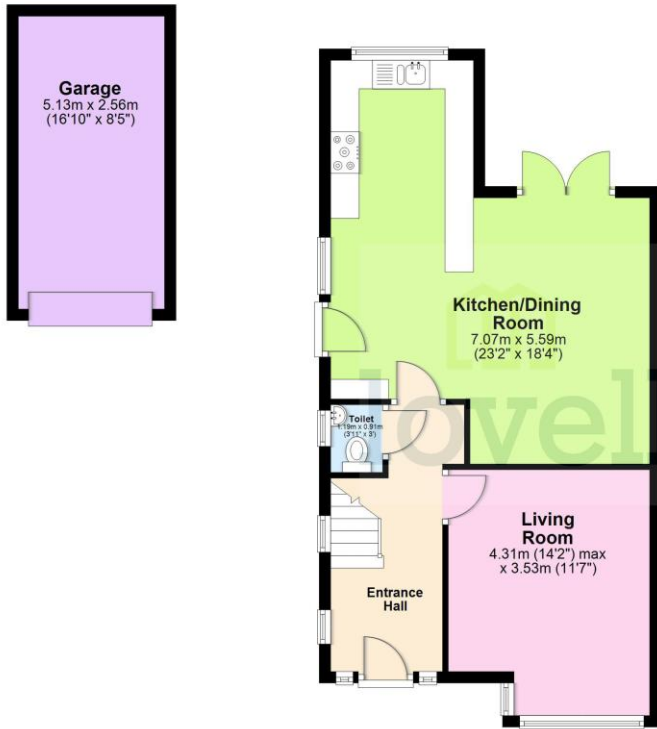
Disclaimer

We endeavour to make our sales particulars accurate and reliable, however, they do not constitute or form part of an offer or any contract and none is to be relied upon as statements of representation or fact. Any services, systems and appliances listed in this specification have not been tested by us and no guarantee as to their operating ability or efficiency is given. All measurements have been taken as a guide to prospective buyers only, and are not precise. If you require clarification or further information on any points, please contact us, especially if you are travelling some distance to view.

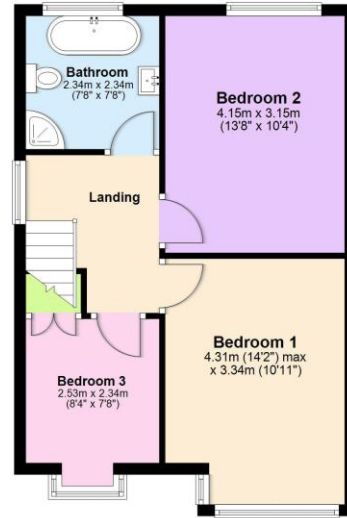
Mobile and broadband

It is advised that prospective purchasers visit checker.ofcom.org.uk in order to review available wifi speeds and mobile connectivity at the property.

Ground Floor
Approx. 67.4 sq. metres (725.6 sq. feet)

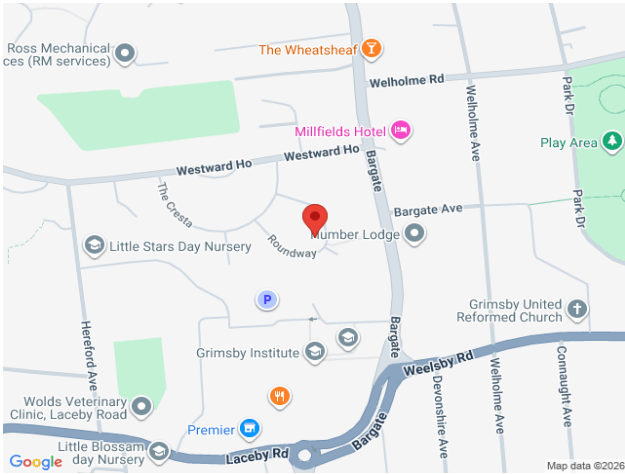


First Floor
Approx. 46.5 sq. metres (500.6 sq. feet)



Total area: approx. 113.9 sq. metres (1226.2 sq. feet)

The provided floor plan is intended for general informational purposes only and may not accurately represent the exact dimensions, layout, or features of the property. The floor plan should not be relied upon for making decisions about purchasing, renting, or modifying the property. Actual measurements and features may vary. It is recommended that interested parties conduct a physical inspection of the property to verify the accuracy of the floor plan and obtain specific information about the property's condition, amenities, and any other relevant details.
Plan produced using PlanUp.



lovelle

When it comes to **property**
it must be

01472 251918
grimsby@lovelle.co.uk

