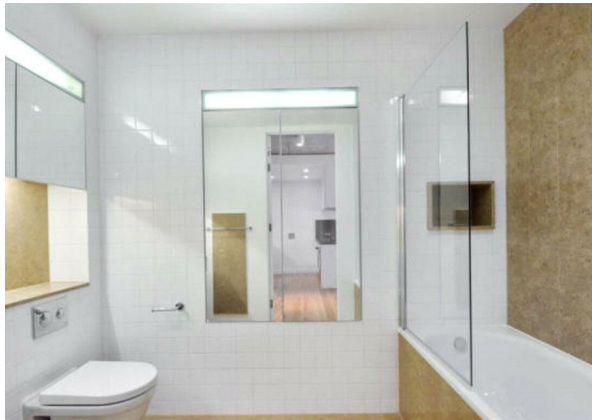


Flat 29, 18 Sidworth Street, London, E8 3SD
£3,850 Per month
EPC Rating: B Council Tax Band: B



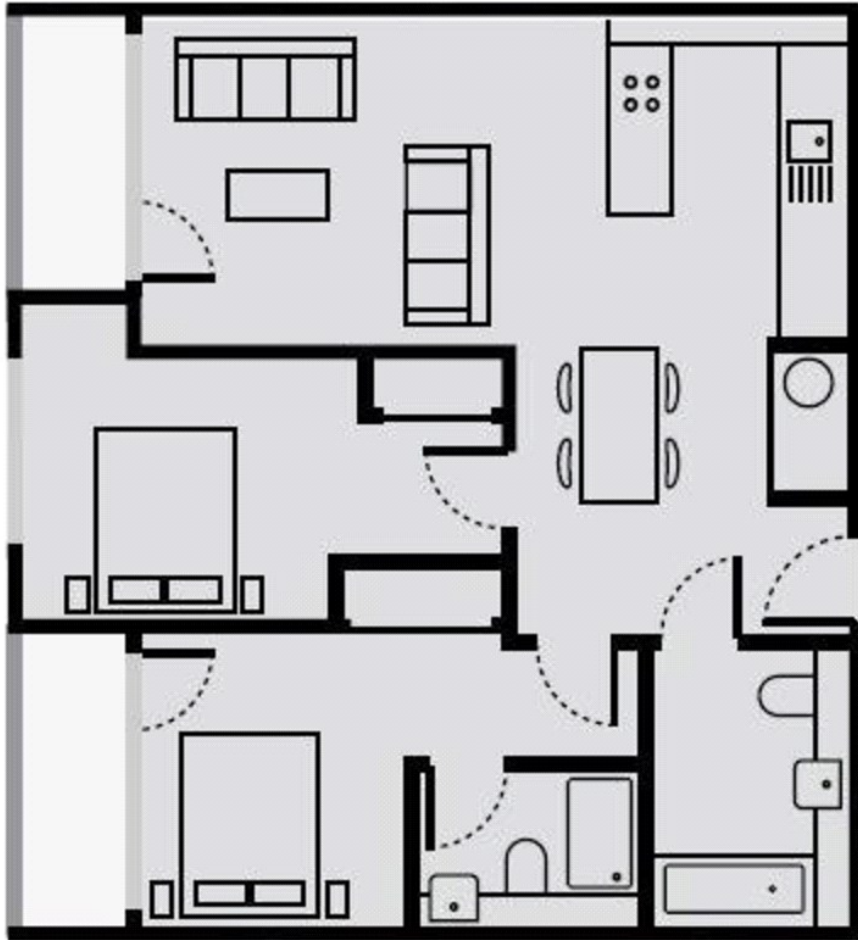
Nestled on Sidworth Street in the vibrant heart of London, this exquisite two-bedroom apartment is a true gem. Spanning an impressive 764 square feet, this property showcases a stunning warehouse style that is both contemporary and inviting.

As you step inside, you will be greeted by an abundance of natural light pouring through the full-height windows, creating a warm and airy atmosphere. The exposed concrete ceilings add a unique character to the space, while the striking interiors are designed to impress. This apartment features two well-appointed bathrooms, ensuring comfort and convenience for residents and guests alike.

The development boasts a range of luxurious amenities, including a 24-hour concierge service and lift access, providing both security and ease of living. One of the standout features is the communal roof terrace, offering a perfect spot to unwind while enjoying breathtaking views of the city.



Percy House,
33-34 Gresse Street,
London
W1T 1QU
020 7043 8888
Lettings@stone.london



Floor area: 764 sq ft

Energy Efficiency Rating		Current	Potential
<i>Very energy efficient - lower running costs</i>			
(92 plus) A			
(81-91) B		83	
(69-80) C			
(55-68) D			
(39-54) E			
(21-38) F			
(1-20) G			
<i>Not energy efficient - higher running costs</i>			
England & Wales		EU Directive 2002/91/EC	