



**2 BRAY COURT, NORTH PARADE  
CHESSINGTON  
KT9 1QN  
OFFERS IN EXCESS OF  
£300,000**

**GROUND FLOOR FLAT**

**TWO BEDROOMS**

**15' X 11'6 LIVING ROOM**

**10'6 X 8' KITCHEN**

**WHITE BATHROOM SUITE**

**DOUBLE GLAZED WINDOWS**

**GAS CENTRAL HEATING**

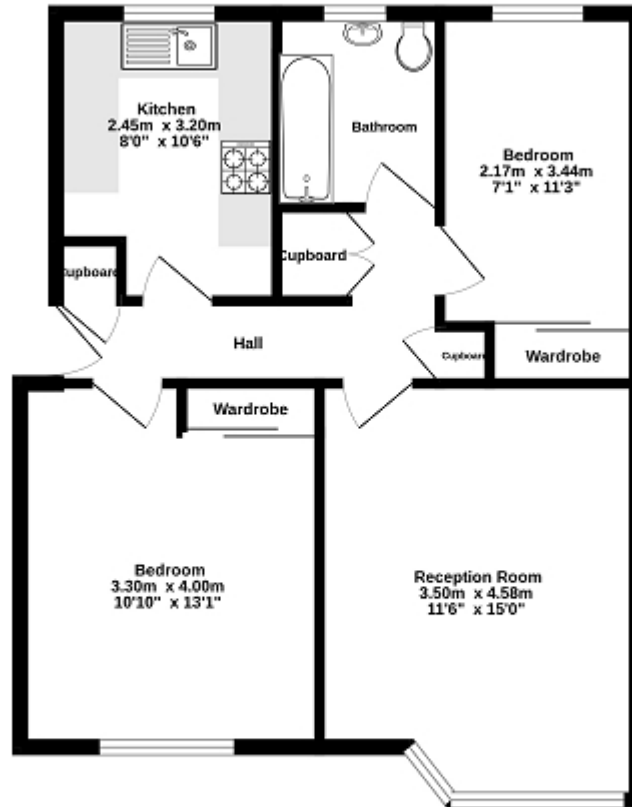
**COMMUNAL GARDENS**

**GARAGE IN BLOCK**

**WELL PRESENTED**

**SHARE OF FREEHOLD**

Ground Floor  
58.0 sq.m. (624 sq.ft.) approx.



TOTAL FLOOR AREA: 58.0 sq.m. (624 sq.ft.) approx.

While every attempt has been made to ensure the accuracy of the floorplan contained here, measurements of doors, windows, rooms and any other items are approximate and no responsibility is taken for any error, omission or mis-statement. This plan is for illustrative purposes only and should be used as such by any prospective purchaser. The services, systems and appliances shown have not been tested and no guarantee as to their operability or efficiency can be given.  
Made with Metropac 02028

