

Burlington Close, W9

£673,500

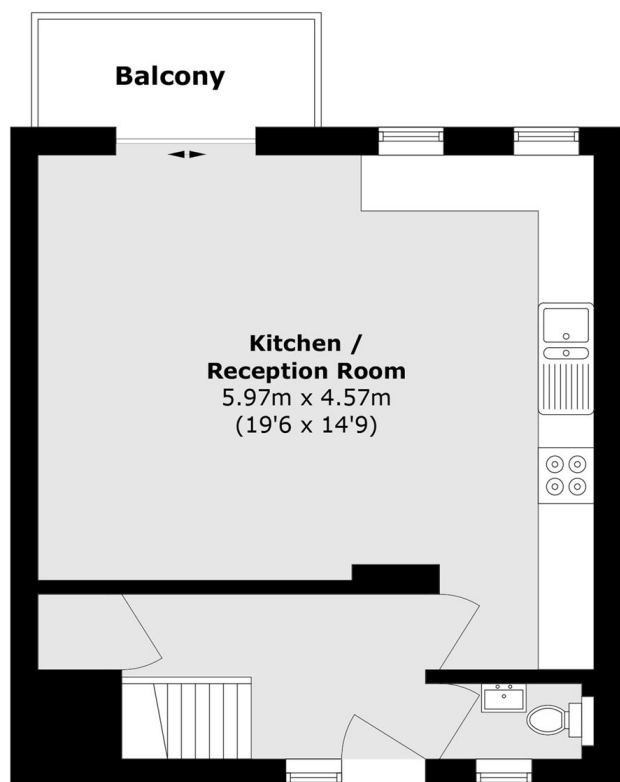
A beautifully presented split-level flat set within a purpose-built block in Maida Vale. This spacious home offers three double bedrooms, a modern open plan reception/kitchen with direct access to a private balcony, a sizable bathroom and additional WC. The property also benefits from an allocated off-street private parking space and access to well-kept communal grounds.

Perfectly positioned between Maida Vale and Westbourne Park stations, the property benefits from superb transport connections via the Bakerloo and Hammersmith & City lines, as well as excellent access to local bus routes. It is also close to the scenic Little Venice canals and Paddington Recreation Ground, with the vibrant Portobello Road Market and Notting Hill just a short distance away.

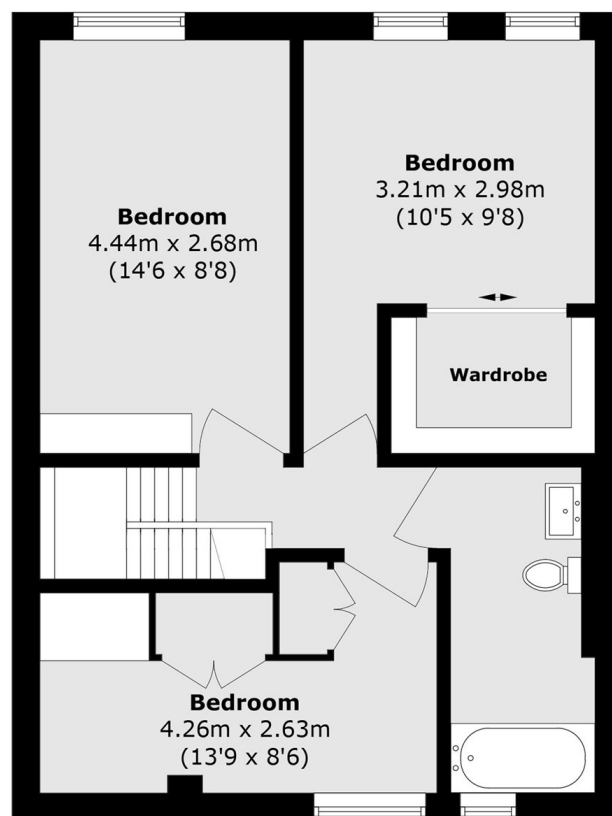
Features

- Private Off-Street Parking
- Share of Freehold
- Gated Community
- Open Plan Kitchen/Reception
- Private Garage
- Separate WC

Burlington Close, Maida Vale, W9



Third Floor



Fourth Floor

Total area (approx.): 86.5 sq. m (931.1 sq. ft)

Balcony area (approx.): 3.4 sq. m (36.6 sq. ft)