



Price
£560,000

Freehold

4x  2x  2x 

**The Pines, Angmering,
West Sussex, BN16**

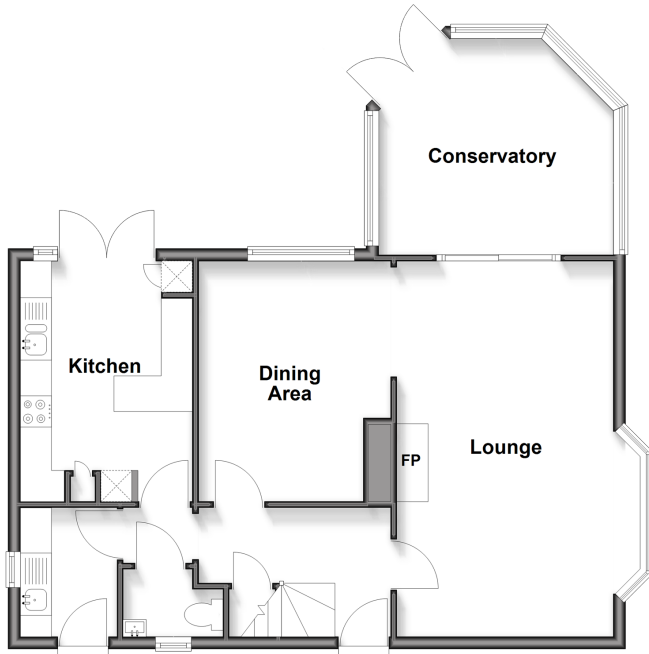
OVER 60?

Secure this property
for up to **59% less!**

cubitt & west
Helping you move forwards

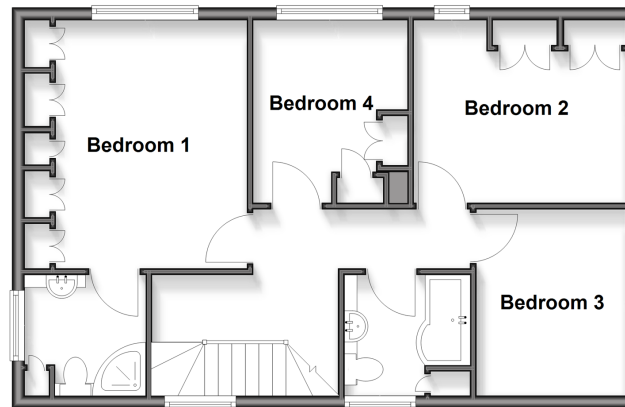
Ground Floor

Approx. 70.4 sq. metres (757.6 sq. feet)



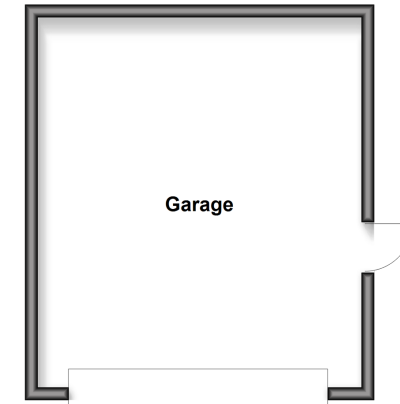
First Floor

Approx. 58.3 sq. metres (627.4 sq. feet)



Outbuilding

Approx. 31.0 sq. metres (333.8 sq. feet)



Accommodation

GROUND FLOOR

Entrance Hallway
Cloakroom
Lounge: 20'4 x 13'0 (6.20m x 3.97m)
Dining Area: 13'4 x 10'2 (4.07m x 3.10m)
Conservatory: 12'4 x 11'2 (3.76m x 3.41m)
Kitchen: 13'4 x 9'2 (4.07m x 2.80m)
Utility Room: 6'9 x 5'1 (2.06m x 1.55m)

FIRST FLOOR

Landing
Bedroom 1: 13'1 x 9'8 (3.99m x 2.95m)
En-suite Shower Room
Bedroom 2: 11'4 x 9'7 (3.46m x 2.92m)
Bedroom 3: 9'8 x 8'7 (2.95m x 2.62m)
Bedroom 4: 9'8 x 8'2 (2.95m x 2.49m)
Family Bathroom

OUTBUILDING

Double Garage

OUTSIDE

Front Garden
Rear Garden
Driveway



Main features

- Wonderful family home located in a quiet Cul de Sac
- Sought after Dell area of Angmering
- Views over the pretty rear garden from the conservatory
- Close to good schools and amenities
- Offered for sale with no ongoing chain



Nearest Schools

Primary Schools: Georgian Gardens Community Primary 0.5 miles, St Wilfrids Catholic Primary 0.6 miles, East Preston Junior School 0.7 miles

Secondary Schools: The Angmering School 0.0 miles,



Transport Information

Train Stations: Angmering 0.3 miles, Goring-by-Sea 2.3 miles, Littlehampton 2.7 miles



Address

The Pines, Angmering, West Sussex, BN16



Directions

For directions to this property please contact us.



cubitt&west
Helping you move forwards

Call Rustington Branch 01903 775576 ■ cubittandwest.co.uk



Unable to display material information. Please check with the branch for material information details for this property