



jordanfishwick

Turing Drive

£3,250 PCM



Turing Drive, Wilmslow, SK9 2ST

£3,250 PCM

Located on this small quiet estate to the North of Wilmslow town centre is this exceptional six-bedroom detached property. Within easy reach of local shops and the town centre, A34, Manchester International Airport and motorway networks this spacious family home also benefits from six bedrooms, off road parking and an impressive open-plan kitchen/family/dining room.

PART FURNISHED AND AVAILABLE NOW

The ground floor include a stylish entrance hallway with attractive flooring which flows throughout the ground floor leading to the spacious living room featuring a bay window which fills the space with natural light. To the rear, the heart of the home, is the stunning open-plan kitchen/dining/family room with French doors opening to the rear garden — ideal for entertaining and everyday family life. The kitchen has been beautifully refitted with high spec units and appliances. The property also benefits from a separate utility room and guest WC.

The first floor offers four bedrooms, including a luxurious master suite featuring two dressing areas/walk-in wardrobes and a contemporary en-suite with both bath and separate shower. Bedroom two also benefits from its own en-suite, while the additional bedrooms are served by a stylish refitted family bathroom.

The top floor provides two further double bedrooms and a modern, refitted shower room — perfect for guests, teenagers, or a home office setup.

To the front a large driveway offers ample off road parking and leads to the double garage. The enclosed rear garden is a fantastic size, mainly laid to lawn with a flagged patio area

Contact Wilmslow 01625 536300 £33250.00pcm

COUNCIL TAX F

EPC C

LOCATION

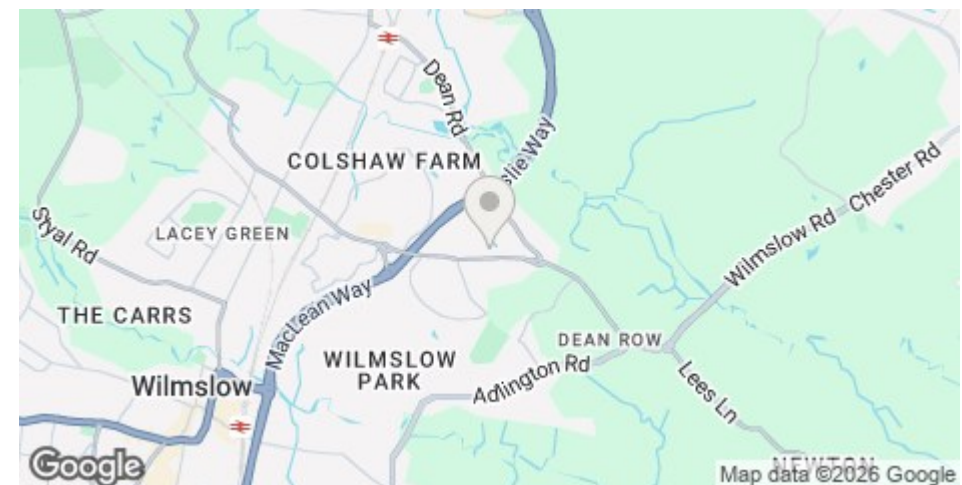
Set on this quiet estate to the North of Wilmslow Town Centre but within easy reach of locals schools and shops

Jordan Fishwick Estate and Letting Agents Wilmslow office is located in a prime position central to the bustling and stylish town centre. With our impressive frontage it's impossible to miss our attractive office.

With a busy lettings department along with knowledgeable and friendly staff we are known throughout the Wilmslow area for our proactive approach in helping people find their dream home

DIRECTIONS

Come off the A34 at Summerfields roundabout and head towards Dean Row Road, Turing Drive can be found on the left hand side



- DETACHED
- SIX BEDROOMS
- FABULOUS KITCHEN DINER
- DOUBLE GARAGE
- AMPLE OFF ROAD PARKING
- GARDENS FRONT AND REAR
- COUNCIL TAX F
- EPC C

Postcode - SK9 2ST

EPC Rating - C

Floor Area - sq ft

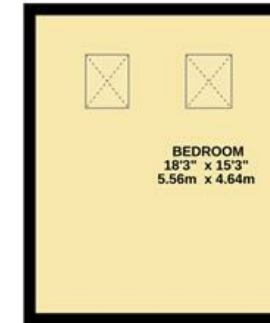
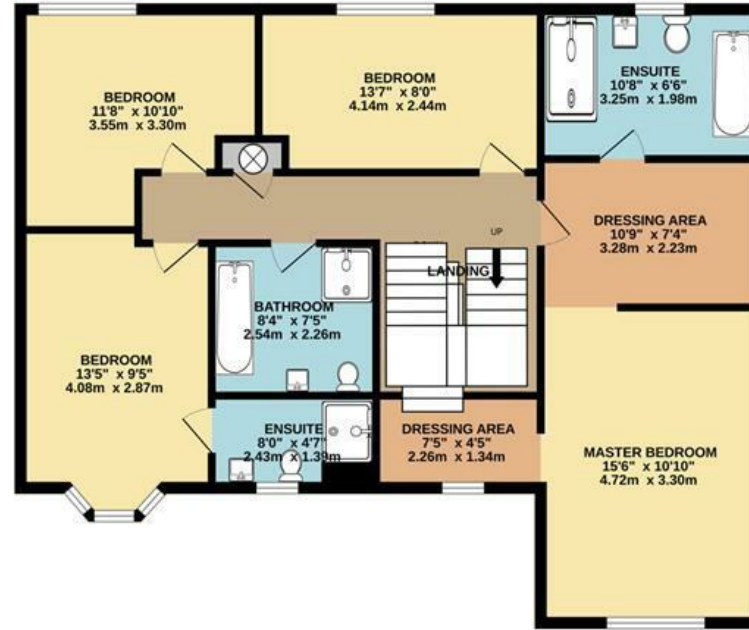
Local Authority - Cheshire East

Council Tax - F



1ST FLOOR
926 sq.ft. (86.0 sq.m.) approx.

2N
552 sq.ft.



TOTAL FLOOR AREA : 2504 sq.ft. (232.7 sq.m.) approx.

Measurements are approximate. Not to scale. Illustrative purposes only
Made with Metropix ©2025



These particulars are believed to be accurate but they are not guaranteed and do not form a contract. Neither Jordan Fishwick nor the vendor or lessor accept any responsibility in respect of these particulars, which are not intended to be statements or representations of fact and any intending purchaser or lessee must satisfy himself by inspection or otherwise as to the correctness of each of the statements contained in these particulars. Any floorplans on this brochure are for illustrative purposes only and are not necessarily to scale.

Offices at: Offices at Chorlton, Didsbury, Disley, Hale, Glossop, Macclesfield, Manchester Deansgate, Manchester Whitworth Street, New Mills, Sale, Wilmslow and Withington

01625 502222