

## High Street, Stotfold, Hitchin, SG5 4LL

Offers Over £750,000

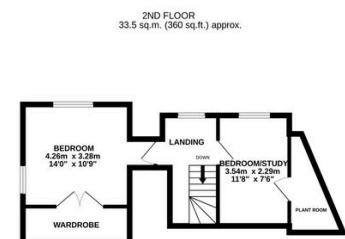
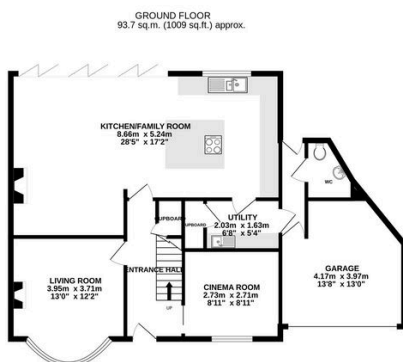
5 3 3



Right in the heart of Stotfold is this fabulous family home. Set across three storeys and encompassing 2250sqft, the heavily extended and newly renovated property is perfectly suited to modern life, with versatility throughout whatever your lifestyle.

## Key Features

- Heavily extended and newly renovated family residence
- Set across three storeys and encompassing 2250 Square Ft
- Kitchen with massive island and integrated appliances
- Cinema room for the ultimate movie night experience
- Four/five further bedrooms, bathroom and second en suite
- Right in the heart of Stotfold, a short walk of all amenities
- Bright open-plan living with roof lantern and bi-fold doors
- Comfortable, cosy lounge with log burner and bay window
- Principal suite with walk-in wardrobe and en suite
- Gated resin driveway, garage, and low-maintenance garden



TOTAL FLOOR AREA: 207.5 sq.m. (2234 sq.ft.) approx.

Whilst every attempt has been made to ensure the accuracy of the floorplan contained here, measurements of doors, windows, rooms and any other items are approximate and no responsibility is taken for any error, omission or mis-statement. This plan is for illustrative purposes only and should be used as such by any prospective purchaser. The services, systems and appliances shown have not been tested and no guarantee as to their operability or efficiency can be given.

Made with Metropix ©2023