

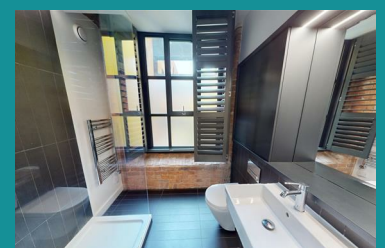
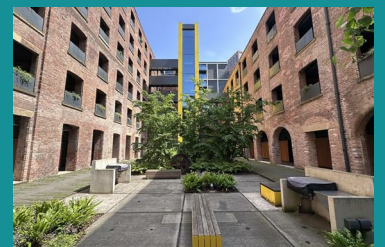


Apartment 114 Crusader Mill, Manchester, M1 2EW

£365,000



**** A MAGNIFICENT CORNER ASPECT APARTMENT BOASTING A WEALTH OF ORIGINAL FEATURES IN A DESIREABLE GRADE II LISTED MILL CONVERSION **** This sophisticated two bedroom property offers a unique blend of modern living and historical charm. It measures close to 950 square feet of stylish accommodation and forms part of an award-winning Victorian mill conversion within the Piccadilly East region of the city. It boasts two spacious bedrooms and stylish bathroom with matching en suite shower room, making it an ideal home for professionals or small families. As you enter the property, you will be led through the hallway to a galley style kitchen with integrated appliances which flows seamlessly through to an inviting living room room that showcases the building's rich history with an abundance of period features that add character and warmth. The communal garden is a standout feature, providing a serene outdoor space for relaxation and social gatherings amidst the hustle and bustle of city life. Residents also benefit from a 24-hour concierge service and post room, ensuring convenience and security at all times. The location is superb, with excellent transport links nearby, including Piccadilly Train Station and New Islington Tram Stop, making commuting a breeze.



- STUNNING TWO BEDROOM APARTMENT
- 24 HOUR CONCIERGE SERVICE + POST ROOM
- STYLISH BATHROOM & EN SUITE SHOWER ROOM
- SHORT WALK FROM PICCADDILLY TRAIN STATION & NEW ISLINGTON TRAM STOP
- PET FRIENDLY DEVELOPMENT
- GRADE II LISTED MILL CONVERSION WITH COMMUNAL GARDEN
- FIRST FLOOR CORNER ASPECT POSITION
- BOASTING EXPOSED BRICKWORK, CAST IRON PILLARS & TIMBER BEAMS
- NO ONWARD CHAIN
- CLOSE TO NORTHERN QUARTER & ANCOATS