



## Holyport Road, SW6

£1,100,000

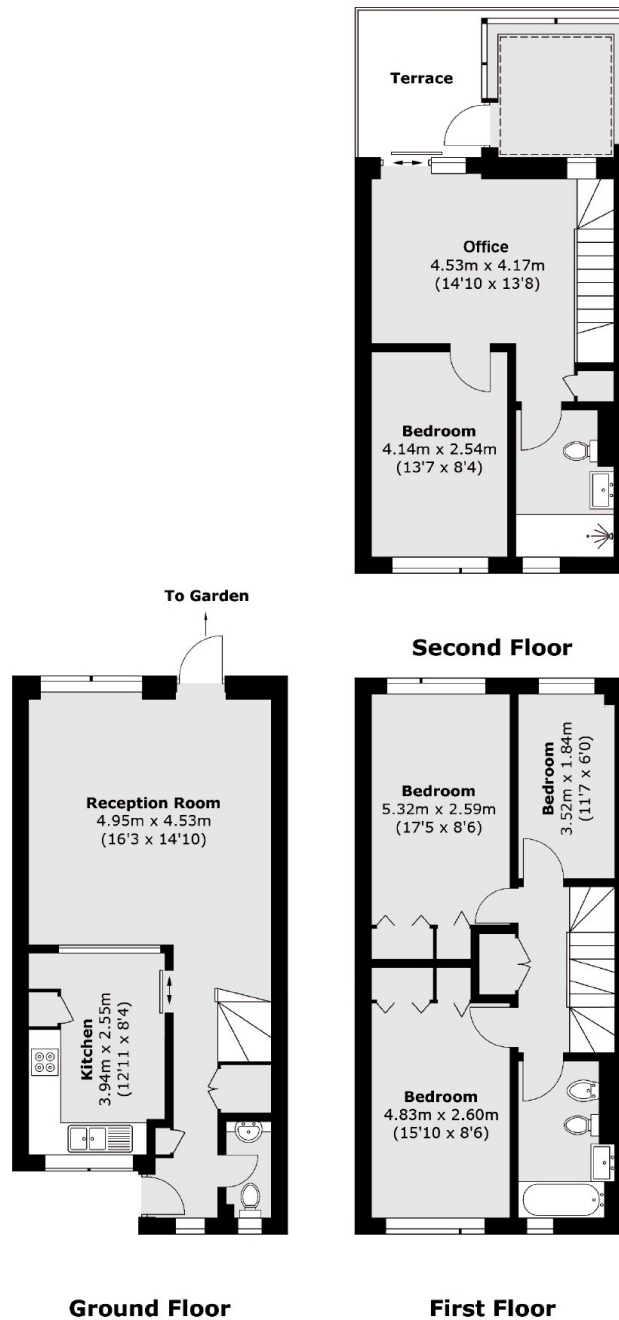
Situated in the peaceful and coveted Rosebank WHARF RIVERSIDE development on Holyport Road, this impressive four bedroom home offers a rare opportunity to acquire a riverside residence in SW6. With generous proportions, abundant light and river views, this property promises both comfort and style for families seeking space and convenience.

The area boasts a wealth of local amenities, including the scenic Thames Path, Bishops Park, and the renowned River Café. Several supermarkets and everyday essentials are within easy reach, while the neighbourhood also caters well to families with a strong selection of schools.

### Features

- Four Bedrooms
- Three Bathrooms
- Riverside Location
- Private Garden
- Private Parking
- Freehold

# Holyport Road, London, SW6



Approx Internal Area: 118.0 sq. m (1,270.1 sq. ft)  
External Storage: 5.1 sq. m (54.8 sq. ft)  
Terrace : 6.8 sq. m (73.2 sq. ft)