



WentWorth
Estate Agents



44 Croft Road, Fairfield Park, Bath, BA1 6JJ

- Detached Family Home
- Two Reception Rooms
- Kitchen
- Ground Floor Cloakroom
- Three Bedrooms
- Family Bathroom
- Driveway Parking & Garaging
- Front & Rear Gardens
- No Onward Chain
- EPC Rating - E

Price guide £575,000

Location

Croft Road is situated in Fairfield Park on the edge of Larkhall village to the east of Bath city centre. Just a short walk away, the village offers a wide selection of shops and many other amenities including a small supermarket, chemist, delicatessen, hardware store, coffee shops, post office, pub, theatre and church with a larger supermarket within easy walking distance. The popular Alice Park is close by and the City of Bath itself offers a further array of parks, public areas, cultural and leisure amenities. Several well regarded state and private schools are easily accessible. Bath has excellent communications to the City of Bristol and is approximately 10 miles from Junction 18 of the M4. There are high speed train services from Bath Spa station to London Paddington, (approximately 90 minutes).

Internal Description

Upon entering this well-presented, detached family home you are greeted with a spacious and bright hallway, with stairs leading to the first floor. The living room, to the front, has a lovely bay window and is filled with natural light. The open plan kitchen/dining area has plenty of space to spend family time or entertain, and offers a bright outlook to the rear. There is also a cloakroom to be found on the ground floor. To the first floor you will find two double bedrooms and a single bedroom, which could be utilized as a home office, and a family bathroom.

External Description

Occupying a generous plot, this superb detached property has driveway parking for several cars and a garage. The gardens to the front offer plenty of space for the keen gardener and benefits from side access to the rear. The enclosed garden to the rear is laid to patio and has an access at the end of the garden to an additional piece of land.

Agents Note


The Property Misdescriptions Act 1991. The Agent has not tested any apparatus, equipment, fixtures and fittings or services and so cannot verify that they are in working order or fit for the purpose. A Buyer must obtain verification from their Legal Advisor or Surveyor. Stated measurements are approximate and any floor plans for guidance only. References to the tenure of a property are based on information supplied by the Seller. The Agent has not had sight of the title documents and a Buyer must obtain verification from their Legal Advisor.

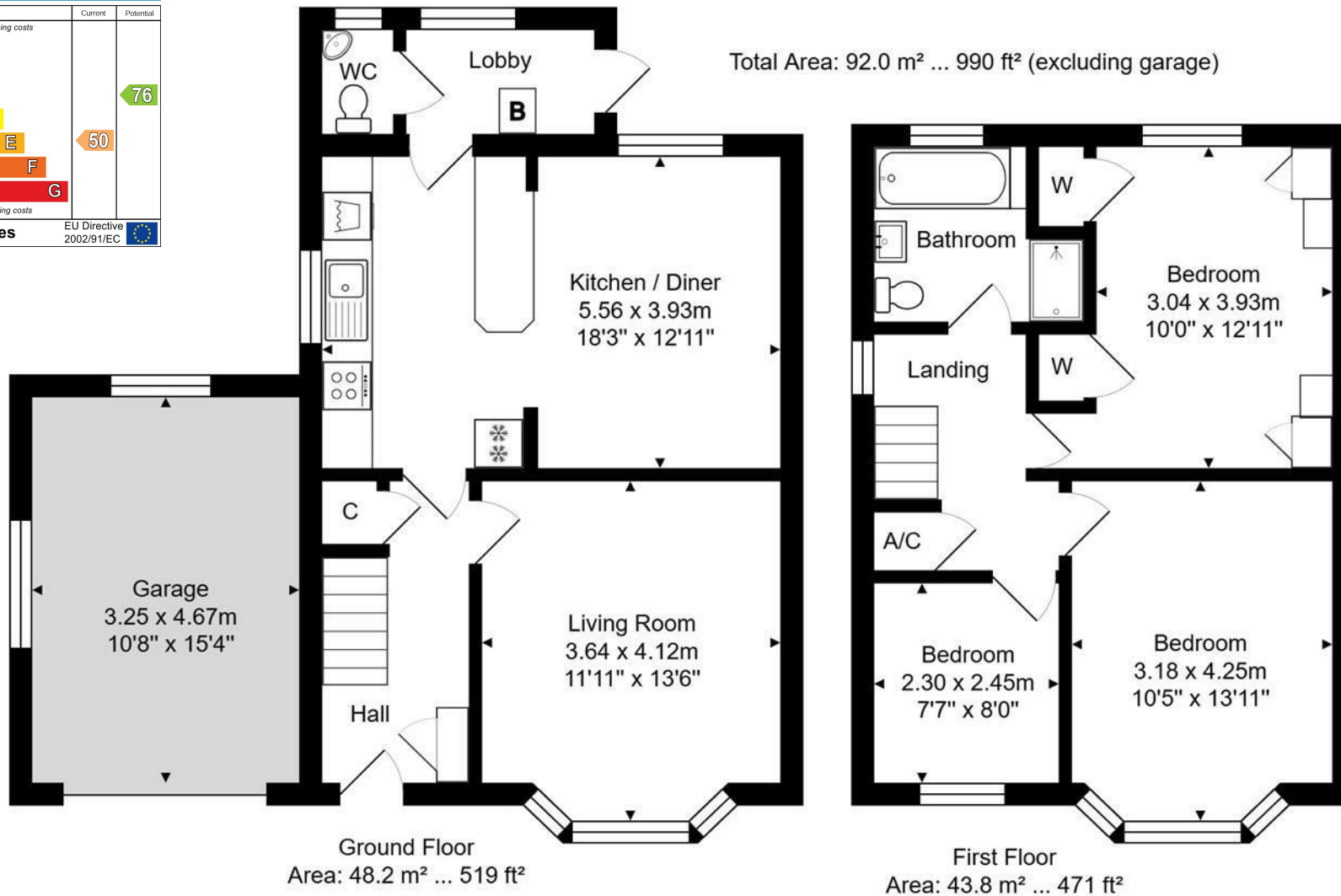
Additional Information

Tenure - Freehold

Council Tax Band - E

NB: This information has been provided to us by the seller . We would always still advise you to do your own due diligence.

Energy Efficiency Rating		Current	Potential
Very energy efficient - lower running costs			
(92 plus)	A		
(81-91)	B		
(69-80)	C		76
(55-68)	D		
(39-54)	E	50	
(21-38)	F		
(1-20)	G		
Not energy efficient - higher running costs			
England & Wales		EU Directive 2002/91/EC	

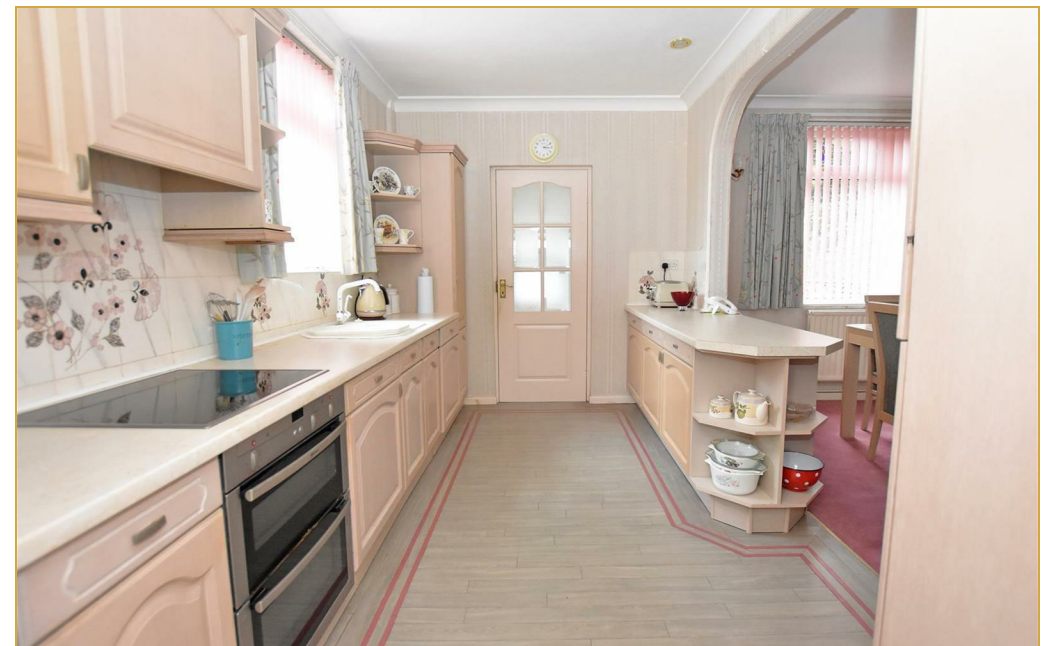


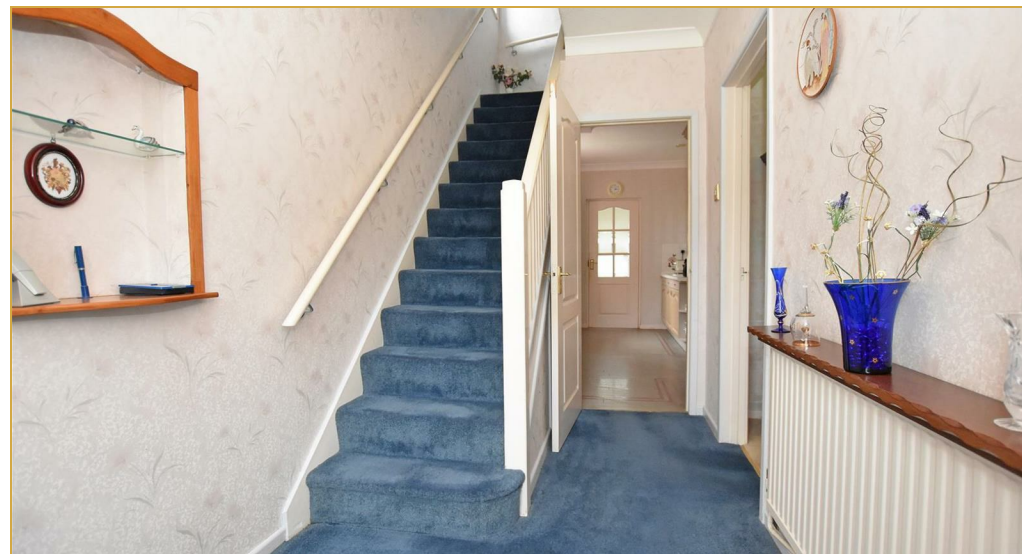
Whilst every attempt has been made to ensure the accuracy of the floorplan contained here, measurements of doors, windows, rooms and any other items are approximate and no responsibility is taken for any error, omission or mis-statement.

This plan is purely for illustrative purposes only and should be used as such by any prospective purchaser.

Area includes internal and external wall thickness

www.epcassessments.co.uk





Wentworth Estate Agents

25 Monmouth Street, Bath, BA1 2AP

01225 904904

bath@wentworthea.com

www.wentworthea.com

Important Notice 1. Particulars: These particulars are not an offer or contract, nor part of one. You should not rely on statements by Wentworth Estate Agents in the particulars or by word of mouth or in writing ("information") as being factually accurate about the property, its condition or its value. Neither Wentworth Estate Agents nor any joint agent has any authority to make any representations about the property, and accordingly any information given is entirely without responsibility on the part of the agents, seller(s) or lessor(s). 2. Photos etc: The photographs show only certain parts of the property as they appeared at the time they were taken. Areas, measurements and distances given are approximate only. 3.Regulations etc: Any reference to alterations to, or use of, any part of the property does not mean that any necessary planning, building regulations and other consent has been obtained. A buyer or lessee must find out by inspection or in other ways that these matters have been properly dealt with and that all information is correct.

