

BRUNTON

RESIDENTIAL



WINDMILL COURT, SPITAL TONGUES, NEWCASTLE UPON TYNE, NE2

Offers Over £180,000

BRUNTON

RESIDENTIAL





BRUNTON

RESIDENTIAL





Charming End Terrace Home Located Within a Quiet Cul-De-Sac at Windmill Court with a Great 18ft Lounge/Diner, Re-Fitted Kitchen, Two Full-Width Double Bedrooms, Family Bathroom with Three-Piece Suite, Rear Garden, Private Allocated Parking & Available with No Onward Chain!

This great two bedroom end terrace home is ideally located at Windmill Court, Spital Tongues. Windmill Court, tucked just off from Claremont Road, sits within walking distance to Newcastle University and the Royal Victoria Infirmary (RVI), as well as Newcastle city centre itself with its countless shops, restaurants and transport links.

The property also enjoys easy access to the wonderful Exhibition Park, offering beautiful open green spaces.

BRUNTON

RESIDENTIAL



BRUNTON

RESIDENTIAL

The internal accommodation comprises: a porch leading into the main living space, where you have an open-plan lounge and dining area providing a good amount of space for both relaxing and entertaining. The kitchen is set separately as a breakfast room, offering a practical layout.

The first floor landing gives access to two double bedrooms, both well-proportioned and offering comfortable accommodation. The family bathroom is well appointed and is fitted with a three-piece suite. Overall, the property has been well managed and maintained.

Externally, the property benefits from an enclosed rear garden, providing a private outdoor space, along with an allocated parking space. The property is well-positioned within Windmill Court, offering convenient access to Newcastle City Centre.



BRUNTON

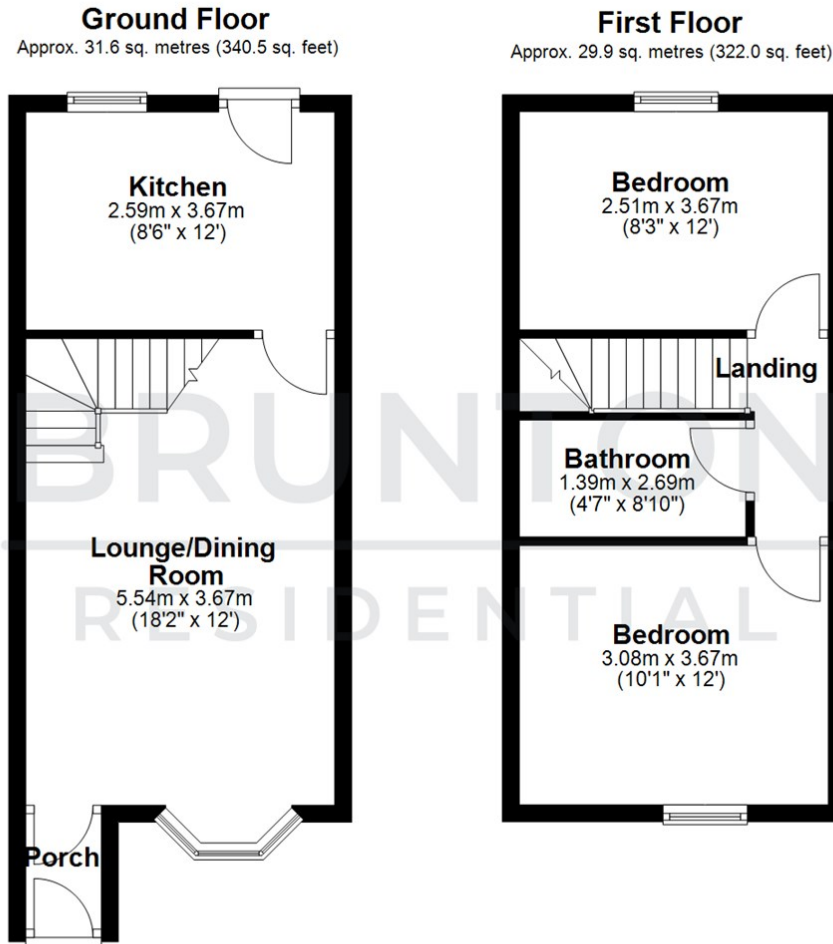
RESIDENTIAL

TENURE : Freehold

LOCAL AUTHORITY : Newcastle CC

COUNCIL TAX BAND : B

EPC RATING : C



Total area: approx. 61.5 sq. metres (662.4 sq. feet)

All measurements are approximate and are for illustration only.
Plan produced using PlanUp.

