



22 Goodwin Lodge, Ark Lane

Guide Price £230,000

DOMINIC MURPHY POWERED BY exp TM UK

@ dominic.murphy@exp.uk.com

🌐 dominicmurphy.exp.uk.com

☎ 01304 746 016

22 Goodwin Lodge, Ark Lane

We are pleased to offer this almost new well-presented one-bedroom first-floor retirement apartment, featuring lift service, and a Juliet balcony overlooking the gardens. The apartment offers deceptively spacious accommodation, including a generous lounge/diner with feature fireplace, a fully fitted kitchen with integrated appliances, a double bedroom with walk-in wardrobe, and a modern shower room. Additional benefits include a hallway storage cupboard and heating included within the service charge.

Goodwin Lodge is a well-managed retirement development of 41 apartments, ideally located just a short distance from Deal seafront, pier and town centre amenities. Residents benefit from an onsite Lodge Manager, Owners' Lounge with regular social events, guest suite accommodation, and comprehensive security including a 24-hour Careline system. At least one resident must be over 60 (second resident over 55).

Key information:

Service Charge: aprox £3,131.82 p.a.

Ground Rent: £575 p.a.

Council Tax: Band B

Lease: 999 years from May 2019

Pets subject to approval







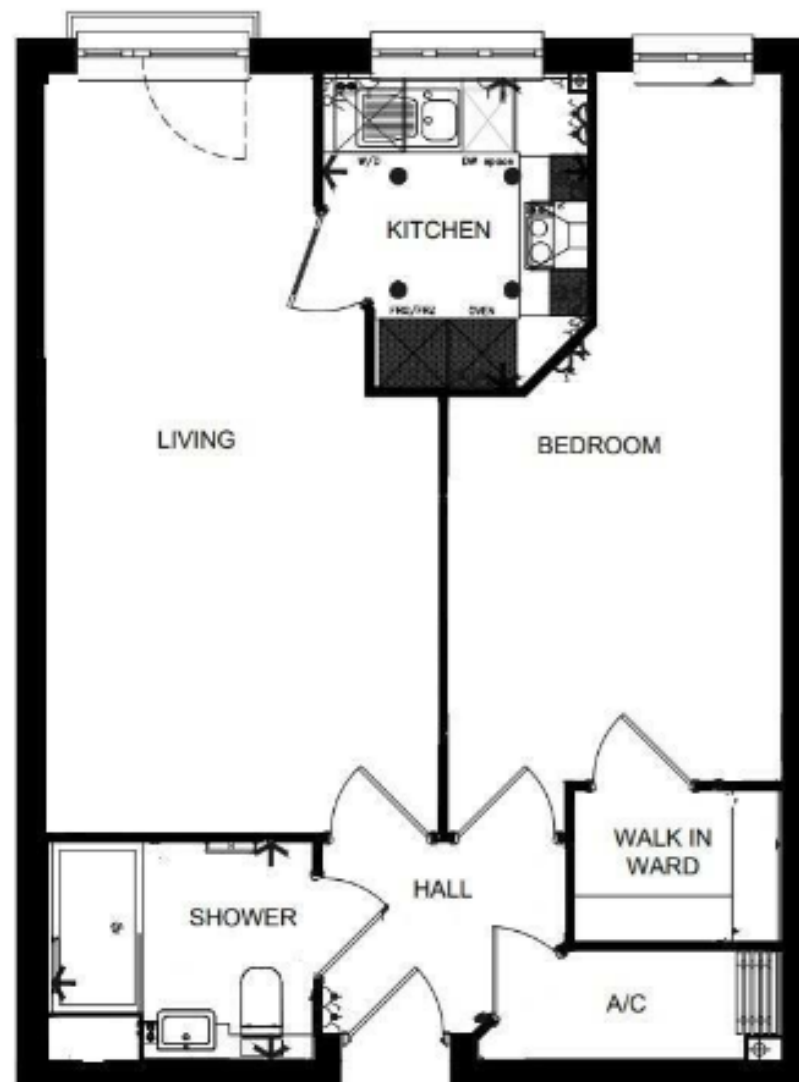


Communal lounge



Communal kitchen





Living	Width	11'-1" [3375]	max	Length	21'-9" [6630]	max
Kitchen	Width	7'-8" [2325]	max	Length	8'-11" [2715]	max
Shower Room	Width	6'-3" [1900]	max	Length	7'-6" [2285]	max
Bedroom	Width	9'-5" [2880]	max	Length	20'-3" [6170]	max
Walk in Wardrobe	Width	5'-11" [1795]	max	Length	4'-4" [1330]	max

eXp World UK Ltd is a registered company at Level 37, 25 Canada Square, London, E14 5LQ.

Registered company number is 12016573. VAT Registration Number is 327 4120 29