

Halsey Street, SW3



Set on a picturesque, quiet residential street lined with classic low-rise terraced houses, this sophisticated first-floor apartment offers a rare blend of period character and contemporary style.

Located in one of Chelsea's most sought-after pockets, the property is just a five-minute stroll from the iconic Sloane Square, providing a tranquil retreat amidst the vibrant energy of London's most prestigious neighborhood.

901.00 sq ft | RECEPTION ROOM | 2 DOUBLE BEDROOMS | ONE WITH EN SUITE SHOWER ROOM |
3RD SINGLE BEDROOM | BATHROOM | OPEN PLAN KITCHEN | BALCONY



£1,200 Per Week

020 7937 9070
www.croft-international.com

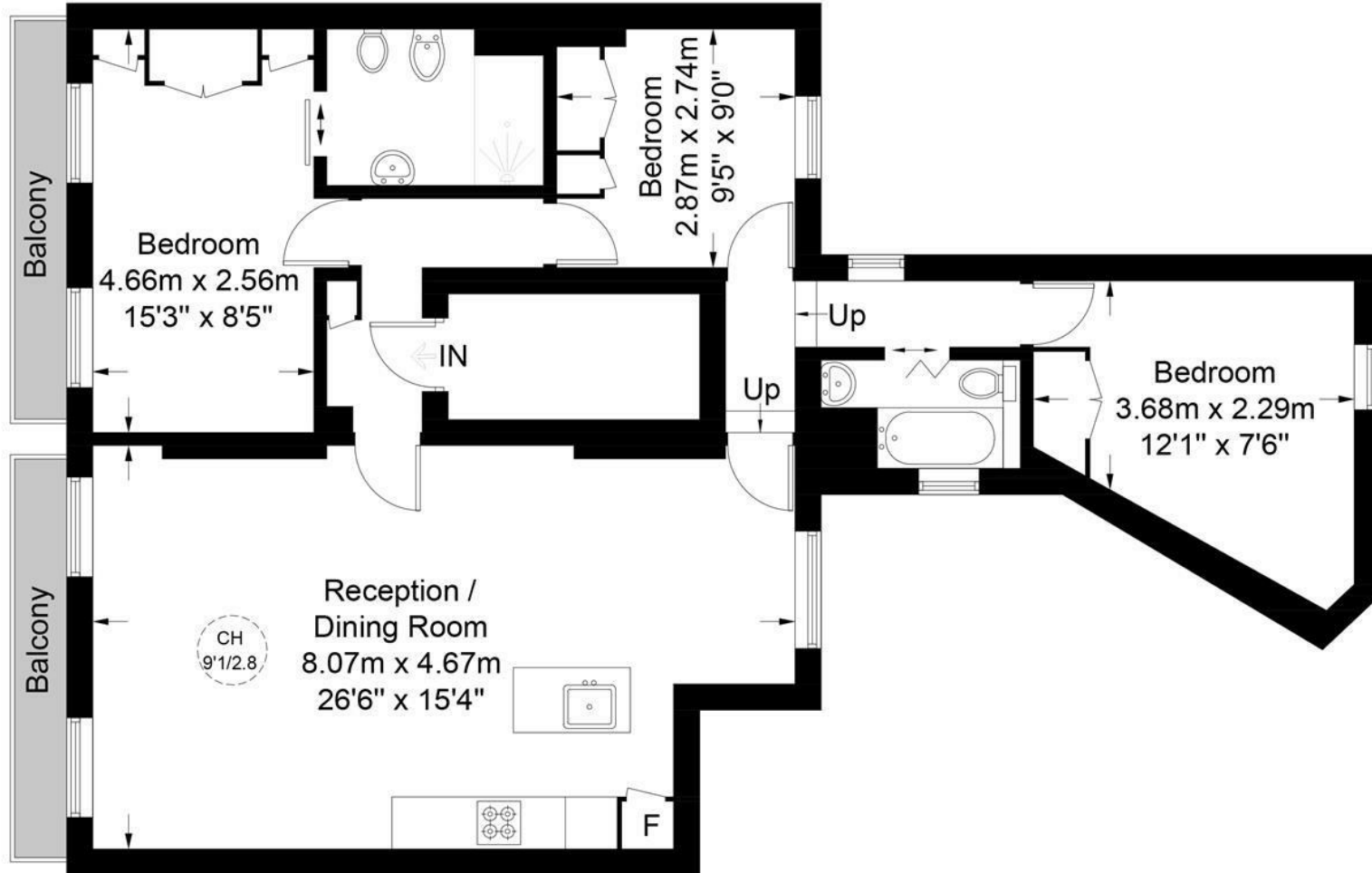
Furnished





Halsey Street, SW3

Approximate Gross Internal Area = 901 sq ft / 83.7 sq m



First Floor

This plan is for layout guidance only. Not drawn to scale unless stated. Windows and door openings are approximate. Whilst every care is taken in the preparation of this plan, please check all dimensions, shapes and compass bearings before making any decisions reliant upon them. (ID783017)

