

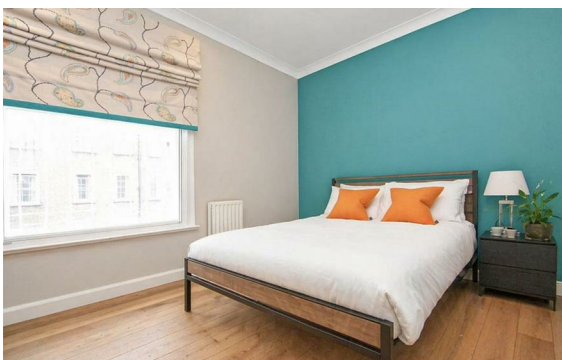


**Transept Street, Marylebone, London, NW1**

Rent £1,269 Per Month

3 Bed | 2 Bath | 1 Reception

*Please call us on 020 7724 2233 or email us [info@newingtonstates.com](mailto:info@newingtonstates.com) to book a viewing.*



60 Upper Montagu Street

London

W1H 1SN

020 7724 2233

[info@newingtonestates.com](mailto:info@newingtonestates.com)

Spacious lateral apartment in a prime Marylebone setting. A generously sized three-bedroom apartment arranged across a single floor, offering excellent proportions and a well-balanced layout in a sought-after central London location.

Ideally located in Marylebone, with excellent transport links via Baker Street Station, Marylebone Station, and Edgware Road Station.

EPC rating: D

## Energy Efficiency Rating: D

Agents Note: Whilst every care has been taken to prepare these particulars, they are for guidance purposes only. All measurements are approximate and are for general guidance purposes only and whilst every care has been taken to ensure their accuracy, they should not be relied upon and potential buyers/tenants are advised to recheck the measurements.

<http://www.newingtonestates.com>