

£850 pcm

Lawrence Bridge Farm, Wimblington Road,
Manea, Cambridgeshire PE15 0JR



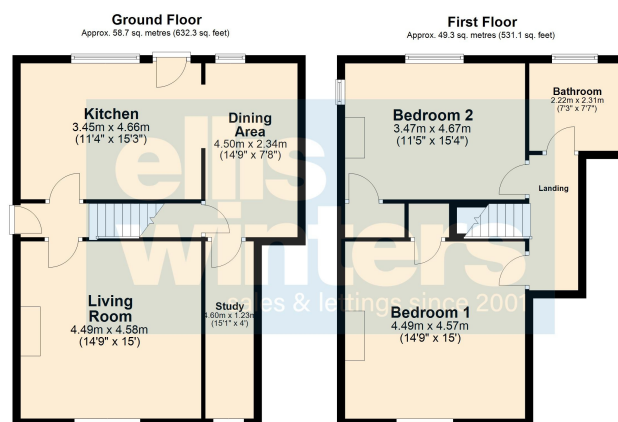
To arrange a viewing call us now on 01354 694900

Deposit £980

Spacious 2-bedroom semi detached house in the rural village of Manea. The ground floor consists of a good-sized lounge and kitchen diner with extra study. Upstairs boasts 2 double bedrooms and bathroom. Outside is ample off-road parking and large garden.

Available from June.

Energy rating D



£850 pcm

Lawrence Bridge Farm, Wimblington Road
Manea, Cambridgeshire PE15 0JR



GROUND FLOOR

Living Room
4.58m (15') x 4.49m (14'9")

Kitchen
4.66m (15'3") x 3.45m (11'4")

Dining Area
4.50m (14'9") x 2.34m (7'8")



Study
4.60m (15'1") x 1.23m (4')

FIRST FLOOR

Bedroom 1
4.57m (15') x 4.49m (14'9")

Bedroom 2
4.67m (15'4") x 3.47m (11'5")



Bathroom
2.31m (7'7") x 2.22m (7'3")

SERVICES

Oil fired central heating
Electricity, mains water, water treatment plant

Energy rating D
Fenland District Council tax band A



Tenant Reference and Credit Checks

As part of our standard pre-tenancy process, we carry out credit and reference checks on all prospective tenants. These checks are essential to ensure suitability for the tenancy and are conducted in accordance with relevant data protection laws (GDPR). The cost of these checks is fully covered by Ellis Winters, and no charge is passed on to the applicant.

Disclaimer

All property details, photographs, floorplans, and other marketing materials produced by Ellis Winters are for general guidance only and do not form part of any contract. While we strive for accuracy, measurements, descriptions, and other information are provided in good faith but should be independently verified. We recommend that prospective tenants conduct their own due diligence before making any decisions.

ellis winters 20 Market Hill, Chatteris, Cambridgeshire, PE16 6BA

Tel: 01354 694900 Email: info@elliswinters.co.uk www.elliswinters.co.uk

ellis winters
sales & lettings since 2001

