



**ALDERNEY STREET**  
PIMLICO

**JACKSON-STOPS** 

---

## ALDERNEY STREET PIMLICO, SW1V

ASKING PRICE: £650,000

A superb chain-free, two-bedroom apartment, presented in good decorative order, now available in the heart of Pimlico, SW1.

Situated on the ground floor and benefiting from excellent natural light throughout, this well-proportioned apartment would make an ideal first-time purchase, buy-to-let investment, London pied-à-terre, or downsizing opportunity. The accommodation comprises of a well proportioned reception room, a separate kitchen, and an additional dining area or study, along with two bedrooms quietly positioned to the rear.

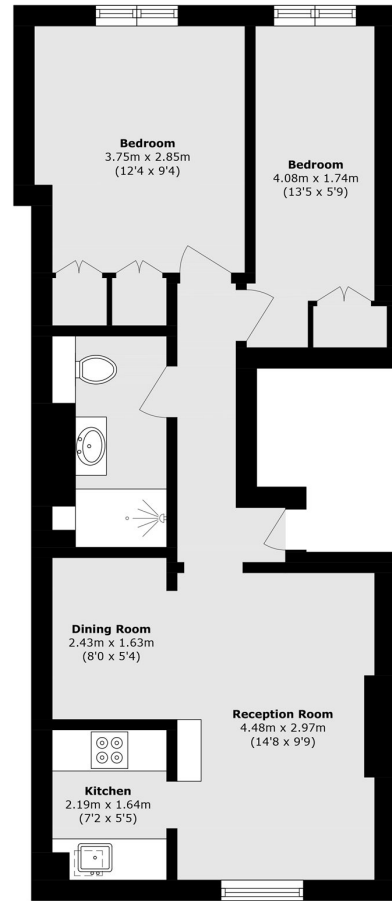
Alderney Street is centrally located within the ever-popular Pimlico Grid. The apartment enjoys a peaceful setting while remaining conveniently close to an array of local shops, cafés, and transport links, including Pimlico and Victoria stations. Battersea Park and the River Thames are also within easy reach.

### KEY FEATURES

- Share Of Freehold
- Two Bedrooms
- Ground Floor
- No Chain
- Service Charge: £2500 pa
- Sole Agent







**Ground Floor**

Total area (approx.): 53.2 sq. m (572.6 sq. ft)

Energy Rating: D. We aim to make our particulars both accurate and reliable. However they are not guaranteed; nor do they form part of an offer or contract. If you require clarification on any points then please contact us, especially if you are travelling some distance to view. Please note that appliances and heating systems have not been tested and therefore no warranties can be given as to their good working order.

**ASKING PRICE: £650,000**

**PIMLICO**

**020 7828 4050**

[pimlicosales@jackson-stops.com](mailto:pimlicosales@jackson-stops.com)

[jackson-stops.co.uk](http://jackson-stops.co.uk)

**JACKSON-STOPS** 