



## Homer Drive, E14

### £450,000

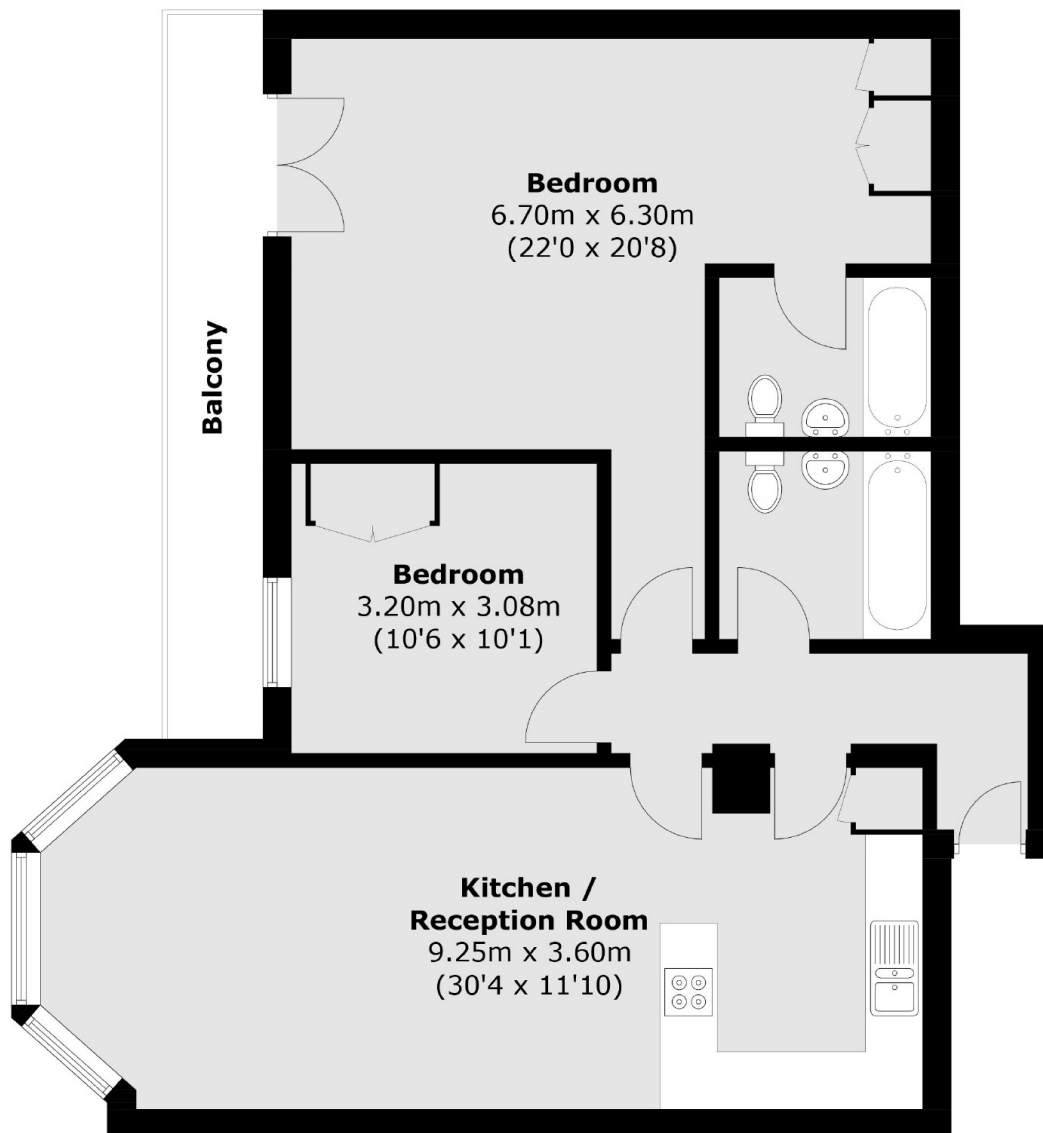
A two-bedroom, two-bathroom home, located in the highly sought-after Cyclops Wharf development. This well-presented property benefits from a private balcony, concierge service, and exclusive residents' facilities. Offered chain-free, it presents an excellent opportunity for both homeowners and investors alike.

Cyclops Wharf is conveniently located just 0.4 miles from Mudchute DLR station, providing excellent transport links across the City.

### Features

- 920 Square Feet
- Chain Free
- Concierge
- Resident Facilities
- Two Double Bedrooms
- Private Balcony

# Homer Drive, London, E14



Total area (approx.): 85.5 sq. m (920.3 sq. ft)  
Balcony: 7.6 sq. m (81.8 sq. ft)