



**1 Bed
Apartment
located in 9 Whitworth Street**

AiHOMES.

55115AT, 9 Whitworth Street, Manchester



£1,500 Per Month

Nestled in the vibrant heart of Manchester, this charming one-bedroom apartment at 9 Whitworth Street offers a perfect blend of modern living and urban convenience. Spanning an impressive 517 square feet, the space is thoughtfully designed to maximise comfort and functionality.

As you enter the apartment, you are greeted by a bright and airy living area that invites relaxation and socialising. The open-plan layout seamlessly connects the living space to a well-appointed kitchen, making it ideal for entertaining guests or enjoying a quiet evening at home. The bedroom is a tranquil retreat, providing a peaceful haven to unwind after a busy day.

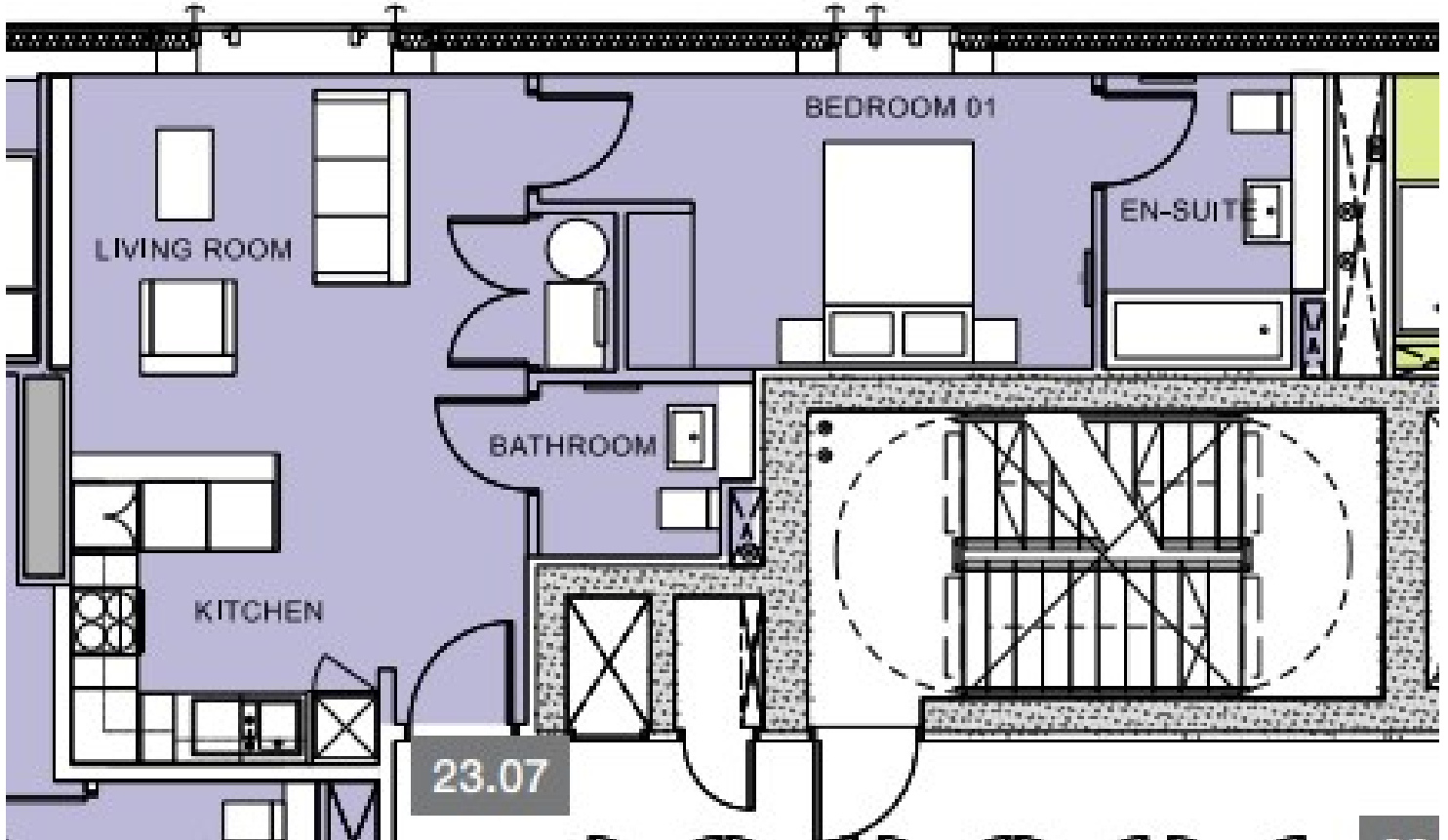
Located in a bustling area, this property is surrounded by an array of amenities, including shops, restaurants, and cultural attractions, ensuring that everything you need is just a stone's throw away. The excellent transport links nearby make commuting a breeze, whether you are heading to work or exploring the wider region.

This apartment is perfect for young professionals, couples, or anyone seeking a stylish and convenient living space in one of the UK's most dynamic cities. With its prime location and modern features, this property presents a fantastic opportunity for those looking to embrace the Manchester lifestyle. Don't miss your chance to make this delightful apartment your new home.





55115AT, 9 Whitworth Street, Manchester



Energy Efficiency Rating		
	Current	Potential
<i>Very energy efficient - lower running costs</i>		
(92 plus) A		
(81-91) B		
(69-80) C		
(55-68) D		
(39-54) E		
(21-38) F		
(1-20) G		
<i>Not energy efficient - higher running costs</i>		
England & Wales	EU Directive 2002/91/EC	

EPC Rating:
Council Tax Band: C

CONTACT

5th floor, Empress Business Center
380 Chester Road
Manchester
M16 9EA

E: info@aihomes.uk

T: 0127 332 8069

AiHOMES.