



Nestled on Grove End Road, this charming apartment blends comfort and convenience in the heart of London. The bright reception room is ideal for relaxing or entertaining, complemented by a modern bathroom and access to a peaceful communal garden.

Residents benefit from a concierge service and an unbeatable location just five minutes from St John's Wood station and the vibrant high street, with excellent transport links, shops, cafés, and restaurants close by.

A fantastic opportunity to enjoy stylish city living in a prime yet tranquil setting.

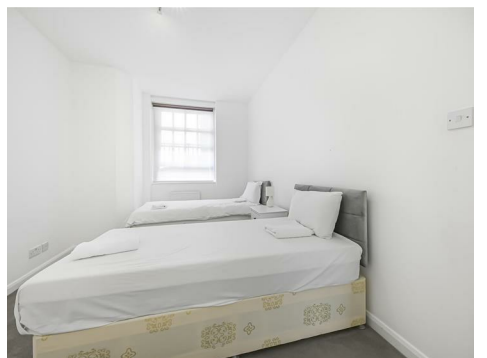
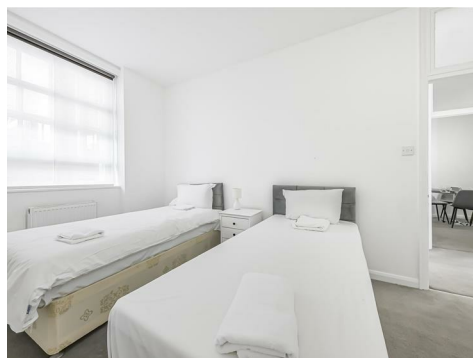
Grove End Road

NW8 9HR

£695 Per Week

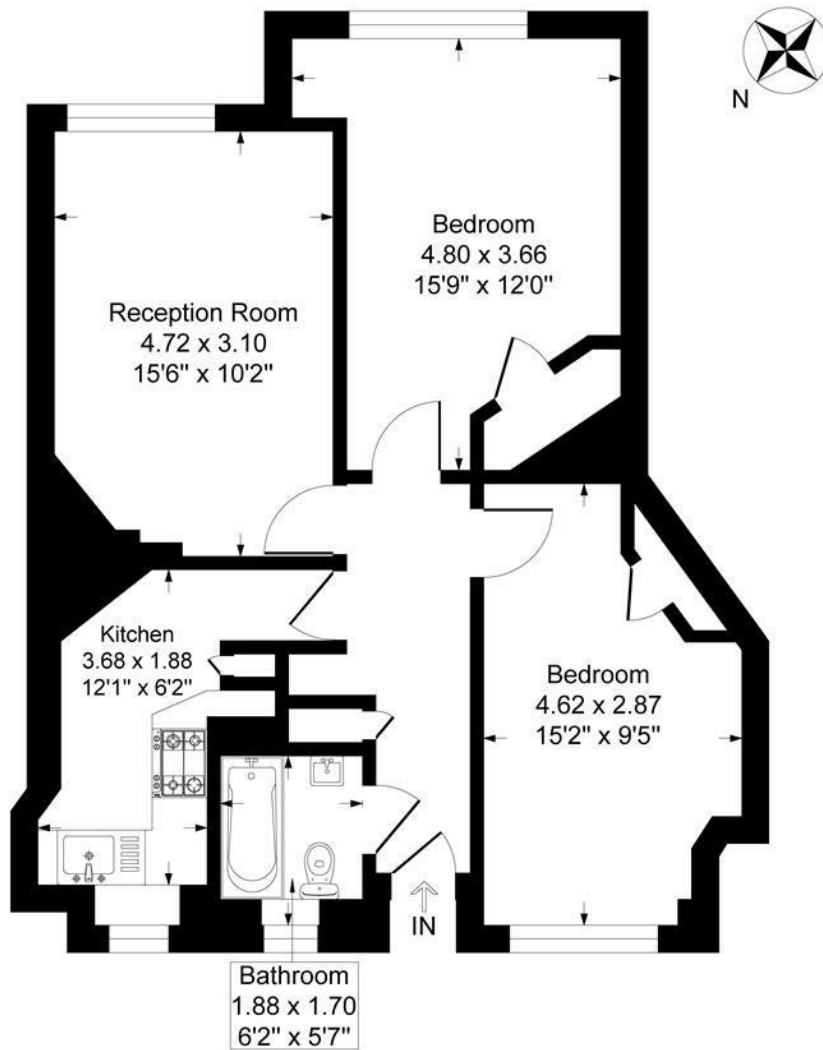
Subject to Contract

FOXGREGORY

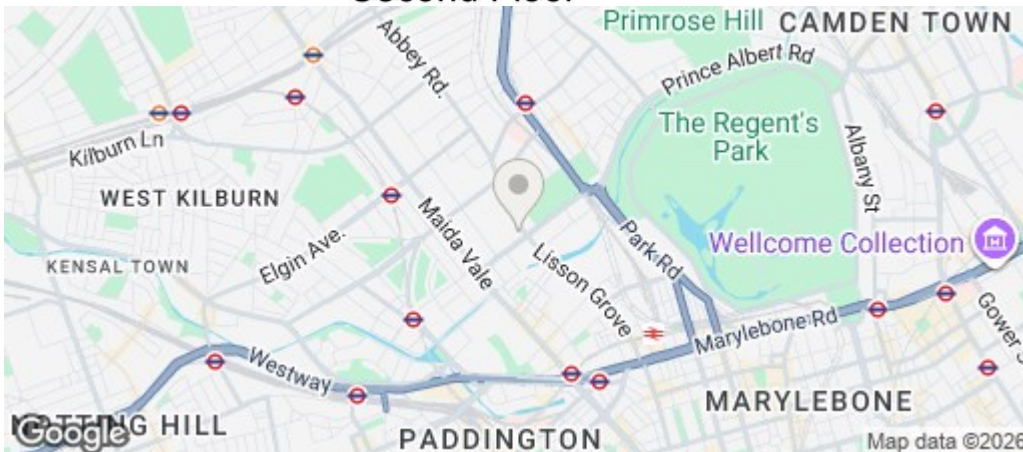


Grove End House Grove End Road, London NW8 9HR

Approximate Gross Internal Floor Area = 61.3 sq m / 660 sq ft



Second Floor



Energy Efficiency Rating		
	Current	Potential
Very energy efficient - lower running costs		
(92 plus) A		
(81-91) B		
(69-80) C		
(55-68) D		
(39-54) E		
(21-38) F		
(1-20) G		
Not energy efficient - higher running costs		
	74	
England & Wales	EU Directive 2002/91/EC	