

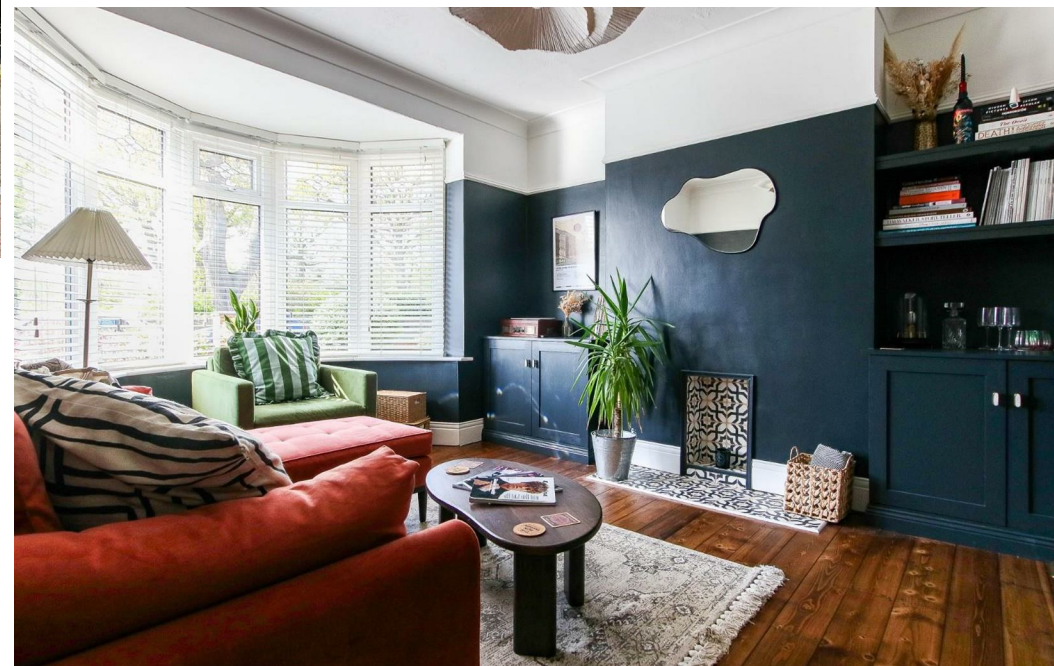


Alexander Hudson Estates

Sales Particulars

Alexander Hudson Estates

Parkside, West Moor, NE12



The Property

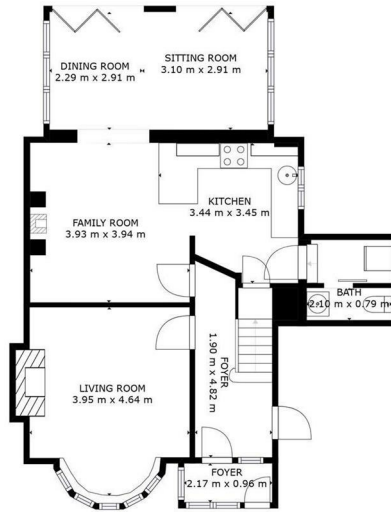
Alexander Hudson Estates are delighted to introduce to the market this well-presented three-bedroom semi-detached family home.

The property briefly comprises an entrance hallway leading into a spacious and bright living room, perfect for relaxation and family gatherings. Further along, you'll find an open-plan kitchen, dining, and seating area—an ideal space for cooking, dining, and socializing. A convenient utility room and WC are also located on the ground floor. Upstairs, the first floor features three well-proportioned bedrooms and a modern family bathroom.

Externally, the property boasts a front drive and an attached garage, providing ample off-road parking and additional storage or parking space. To the rear, you'll find a low-maintenance, beautifully maintained garden—an excellent outdoor space for entertaining or enjoying the warmer months.

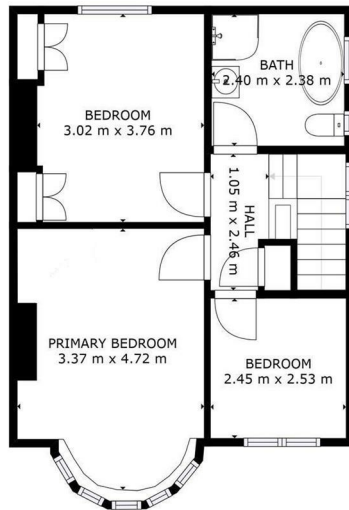
The property is ideally located close to Gosforth, Balliol, and Quorum Business Parks, with the A1 and A19 providing easy access for those commuting further afield. West Moor is adjacent to Killingworth, where you'll find The Killingworth Centre, anchored by a large Morrisons supermarket, as well as the White Swan Centre, which includes a doctor's surgery, activity hall, café, and Killingworth Library. The Lakeside Centre offers a range of leisure facilities, including a swimming pool and soft play area for children.

Freehold
Council Tax: C
EPC Rating: 71



GROSS INTERNAL AREA
FLOOR 1: 76 m², FLOOR 2: 48 m²
TOTAL: 124 m²
SIZES AND DIMENSIONS ARE APPROXIMATE, ACTUAL MAY VARY.

Matterport



GROSS INTERNAL AREA
FLOOR 1: 76 m², FLOOR 2: 48 m²
TOTAL: 124 m²
SIZES AND DIMENSIONS ARE APPROXIMATE, ACTUAL MAY VARY.

Matterport



Alexander Hudson Estates
The Printworks
20 Arrow Close
NE12 6QN

0191 268 7433
sales@alexanderhudson.co.uk