



3.1, 139 143 Notting Hill Gate | Holland Park Notting Hill | London | W11 3LJ

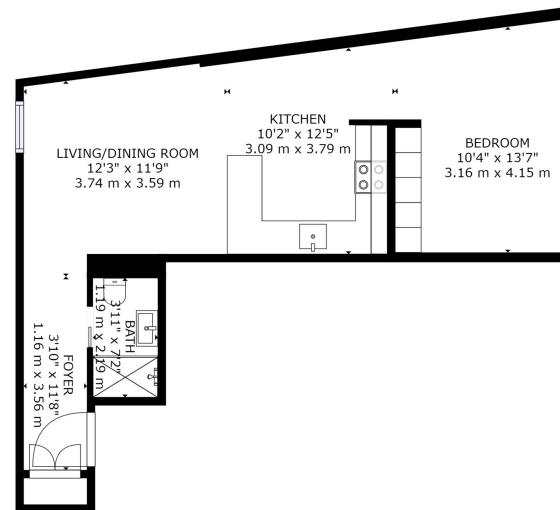
£2,600 Per Month

SÉJOUR

3.1, 139 143 Notting Hill Gate
| Holland Park Notting Hill
London | W11 3LB

Positioned in the heart of Notting Hill, this beautifully designed third-floor studio apartment offers contemporary living moments from one of London's most iconic neighbourhoods.

- Stylish third-floor studio apartment
- Prime Notting Hill location
- Bright open-plan living and sleeping space
- Contemporary fitted kitchen with integrated appliances
- Modern bathroom with spacious walk-in shower
- Finished to a high specification throughout



FLOOR 1

GROSS INTERNAL AREA
FLOOR 1: 491 sq. ft. / 45 m²
TOTAL: 491 sq. ft. / 45 m²
SIZES AND DIMENSIONS ARE APPROXIMATE, ACTUAL MAY VARY.



Energy Efficiency Rating		Current	Potential
Very energy efficient - lower running costs			
(92 plus)	A		
(81-91)	B		
(69-80)	C	70	70
(55-68)	D		
(39-54)	E		
(21-38)	F		
(1-20)	G		
Not energy efficient - higher running costs			
England & Wales		EU Directive 2002/91/EC	

Council Tax Band D
EPC Rating C

10 Cromwell Pl
South Kensington
London
SW7 2JN
020 3865 0611
lettings@cityrelay.com