

# SNELLERS

ESTATE AGENTS



## John Austin Close, KT2

£399,950

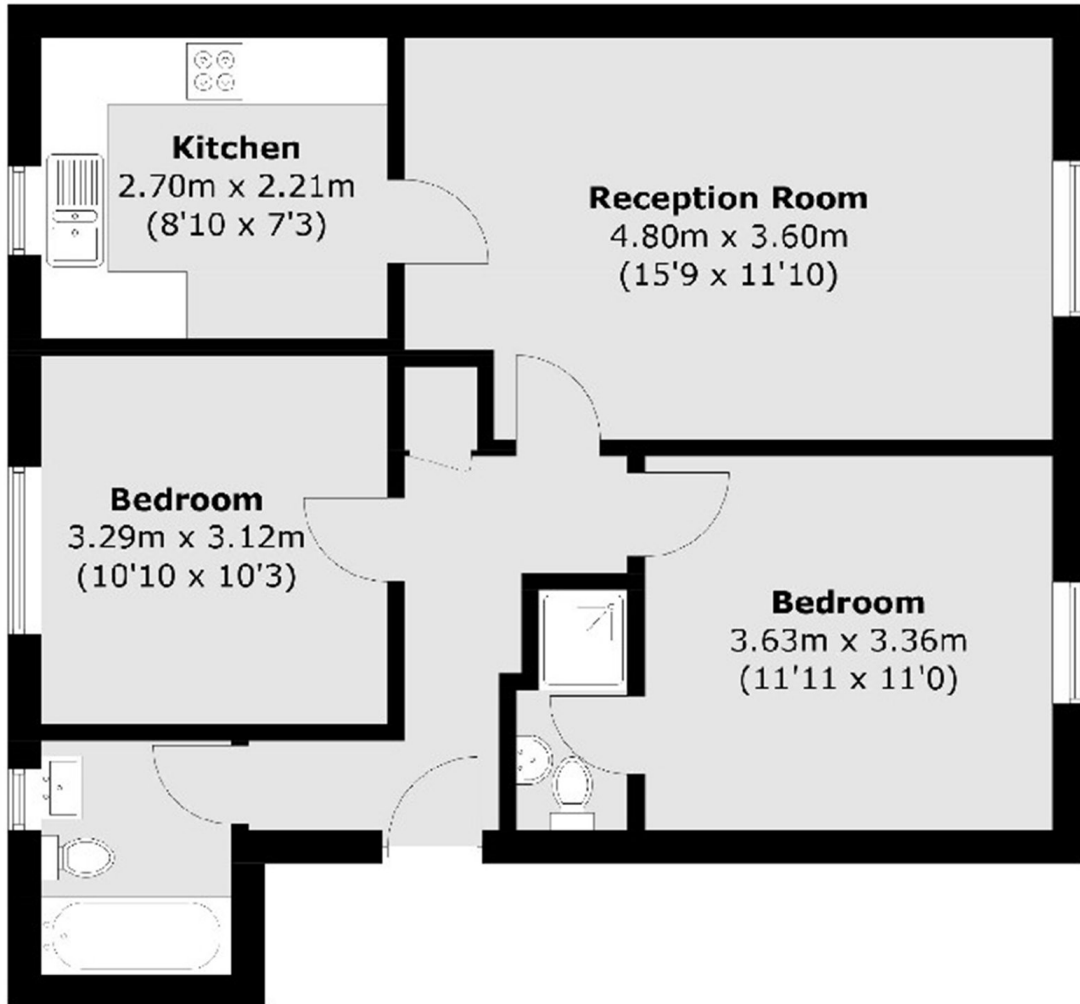
Tucked away in a smart gated development, this two double bedroom flat is a bit of a hidden gem. It's bright, modern, and ready to move straight into no chain to worry about, which is always a bonus! Whether you're looking to get on the ladder, downsize, or snap up a solid investment, this place ticks a lot of boxes.

Kingston's got everything going for it. You're within easy reach of the riverside, loads of shops, cafes, bars and restaurants, plus green spaces like Richmond Park aren't far either. Commuting? The station's nearby with quick links into London. It's the best of both worlds a comfy home in a brilliant spot.

- Two Double Bedrooms • Large Reception • Modern Kitchen •
- Bathroom • Residents Parking • Gated Development •

# SNELLERS

ESTATE AGENTS



## First Floor

Total area (approx.): 66.6 sq. m (716.9 sq. ft)

Snellers Kingston Sales  
17-21 Richmond Road  
Kingston  
KT2 5BW  
020 8546 8715  
kingstonsales@snellers.co.uk

Energy Rating: C We aim to make our particulars both accurate and reliable. However they are not guaranteed; nor do they form part of an offer or contract. If you require clarification on any points then please contact us, especially if you're traveling some distance to view. Please note that appliances and heating systems have not been tested and therefore no warranties can be given as to their good working order