



## SOUTH COURT, SUMMERFIELDS, INGATESTONE, CM4

Asking Price £310,000

2 Bedrooms | 1 Bathrooms | For Sale

### Property Features

- Two Bedroom Flat
- Fully Fitted Kitchen
- Private Garage
- Close to Ingatestone High Street
- No Onward Chain
- First Floor
- Shower Room
- Parking
- Close to Ingatestone Station
- 640 sq ft

Scott City are pleased to present this two bedroom first floor flat situated in Summerfields in Ingatestone, a popular village location with close proximity to Ingatestone High Street and Ingatestone Train Station.

The property extends to approximately 640 sq ft and benefits from a fully fitted kitchen and shower room as well as boasting a private garage and one allocated parking space. The main bedroom includes fitted wardrobe space. There is also ample storage throughout.

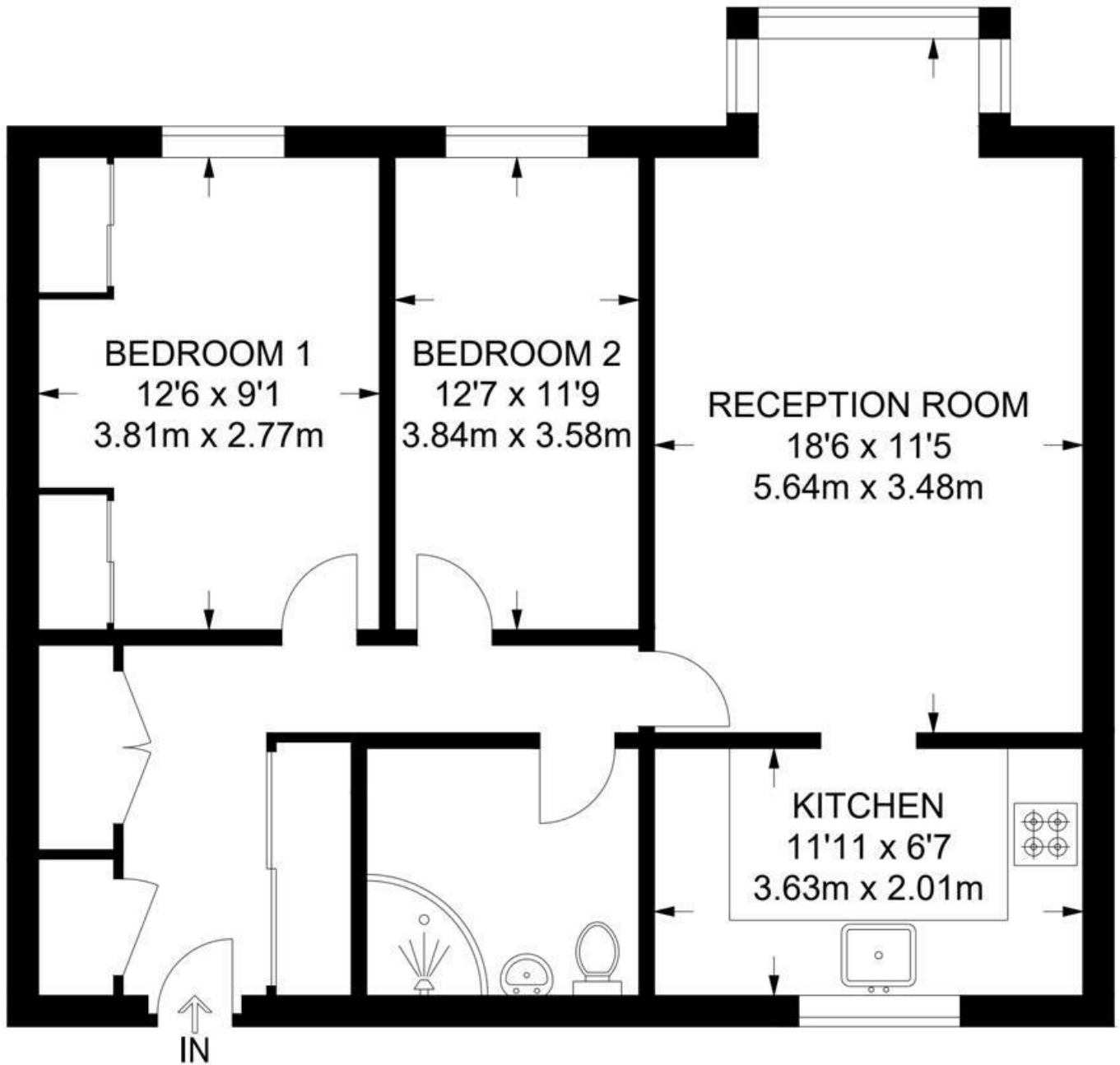
Accessed via a security entrance and offered with no onward chain, this is a great opportunity to purchase in the heart of Ingatestone.

Ideally positioned just off the High Street, where there is a wide selection of independent shops, cafés, restaurants, and bars. Ingatestone Station is a short walk away, offering regular services to Stratford (approx. 21 mins) and London Liverpool Street (approx. 29 mins).

Lease: 959 years remaining

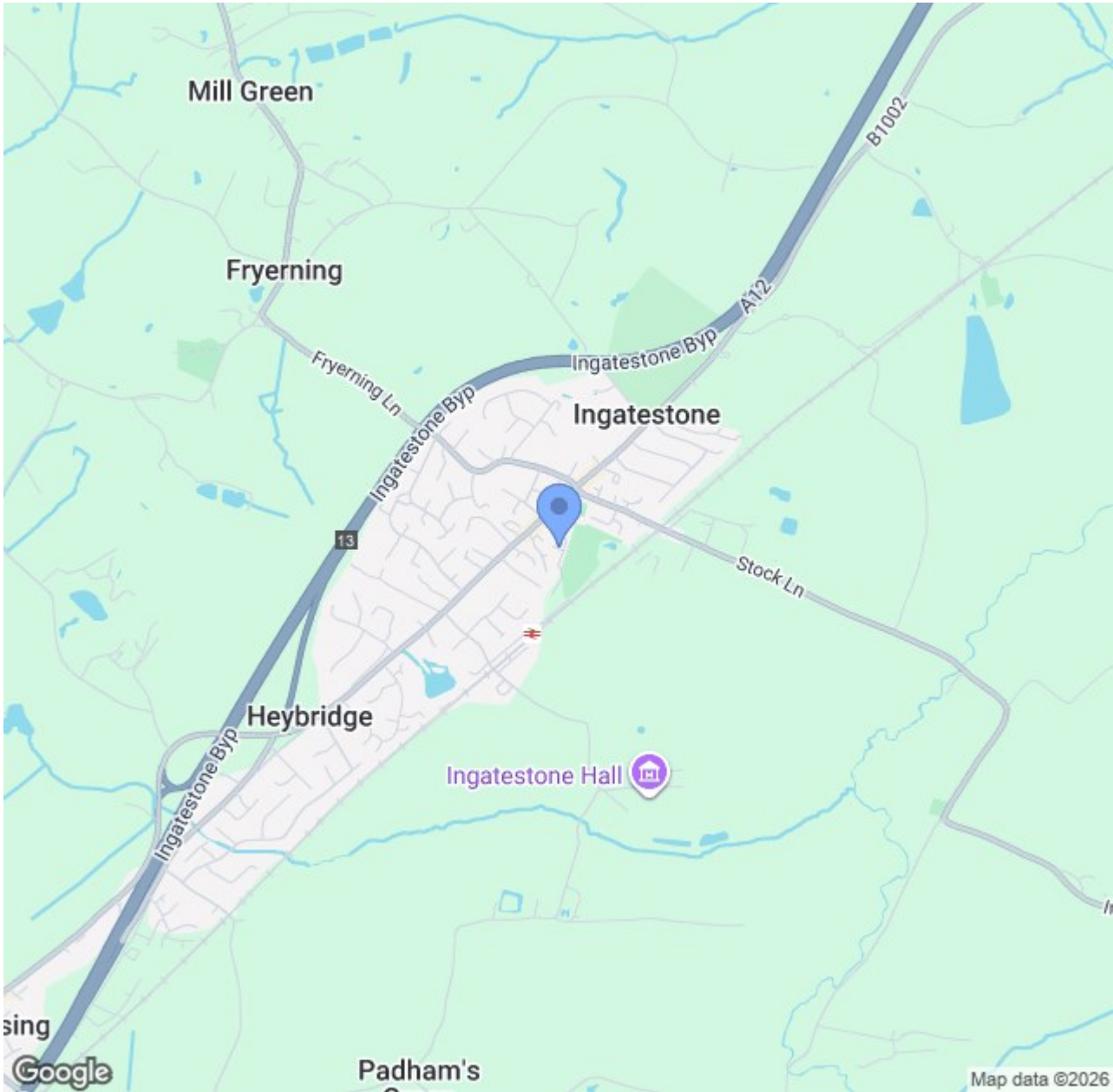
Service Charge: Approx. £2,400 per annum





**FIRST FLOOR**

**APPROXIMATE GROSS INTERNAL AREA  
640 SQ FT / 59.4 SQ M**



**CONTACT US ABOUT THIS PROPERTY**

122 Newgate Street, London, EC1A 7AA

T: 020 7600 0026  
 F: 020 7600 0025  
 E: [property@scottcity.co.uk](mailto:property@scottcity.co.uk)



Energy Efficiency Rating		Current	Potential
Very energy efficient - lower running costs			
(92 plus) <b>A</b>			
(81-91) <b>B</b>			
(69-80) <b>C</b>		80	80
(55-68) <b>D</b>			
(39-54) <b>E</b>			
(21-38) <b>F</b>			
(1-20) <b>G</b>			
Not energy efficient - higher running costs			
<b>England &amp; Wales</b>		EU Directive 2002/91/EC	