

Asking Price £155,000



50 Carew Road, Tiverton, EX16 6BN

- No Onward Chain
- Garage & parking
- Modern kitchen
- Conservatory
- Shower room
- Convenient location
- Private garden
- Sitting dining room
- Double bedroom
- Ground floor

Sales, Lettings, Mortgages:

Bampton 01398 332006 | Cullompton 01884 32100 | Tiverton 01884 253500

50 Carew Road, Tiverton EX16 6BN

A well maintained one bedroom ground floor flat with the benefit of a private garden and garage. Ideal for first time buyers or investors seeking a ready to move into property.



Council Tax Band: A



Tucked away in a peaceful spot on the edge of Tiverton, this purpose built one bedroom ground floor flat offers a combination of privacy, space and convenience. With its own garage, private garden and well maintained interiors, it's ready for someone to move straight in. It's an ideal choice for a first time buyer, anyone looking to downsize, or those seeking a reliable investment.

The front door opens into a welcoming entrance hall with a useful coat cupboard and doors to all rooms. The spacious living room provides plenty of room for both seating and dining furniture, with a fireplace creating a natural focal point. Patio doors lead into a bright conservatory — a lovely spot to relax and enjoy views over the garden. The modern kitchen is fitted with a range of units and includes a built in oven and hob, fridge freezer and washing machine.

The double bedroom is comfortable and well proportioned, featuring a built in wardrobe and a window overlooking the garden. The bathroom includes a shower, WC, basin and a generous airing cupboard housing the gas boiler.

The enclosed rear garden is a standout feature, bordered by mature small trees, shrubs and flowering plants. A charming summer house provides a sheltered seating area for all seasons. A small potting greenhouse and to the side of this a door gives direct access to the garage, which has an up and over door, and there is parking conveniently located opposite.

Services:

Mains electric, gas, water, and drainage

Tenure:

Share of Freehold

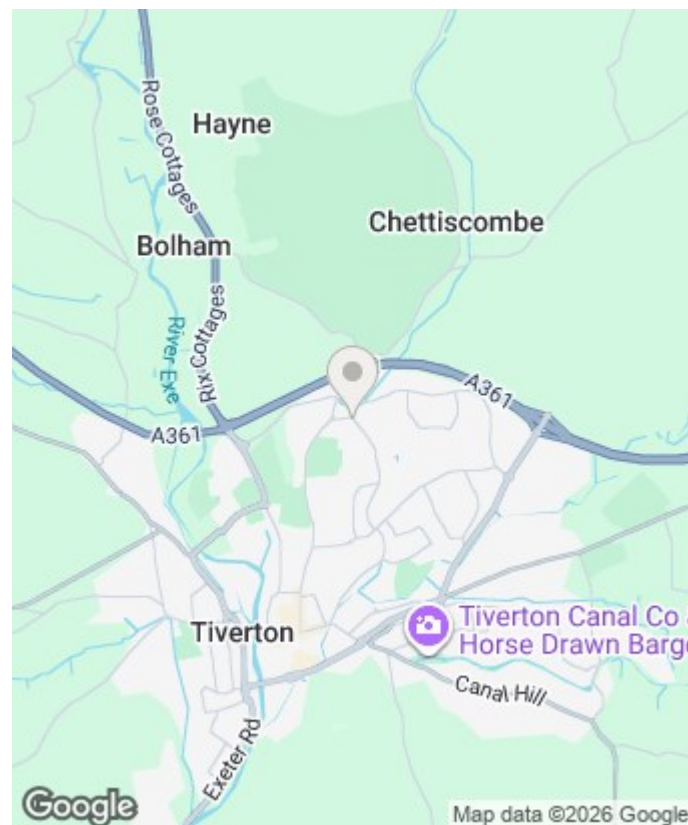
Ground rent £10

Council Tax:

Band A

Local Authority:

MDCC 01884 255 255



Directions

What3words: ///twist.raced.asset

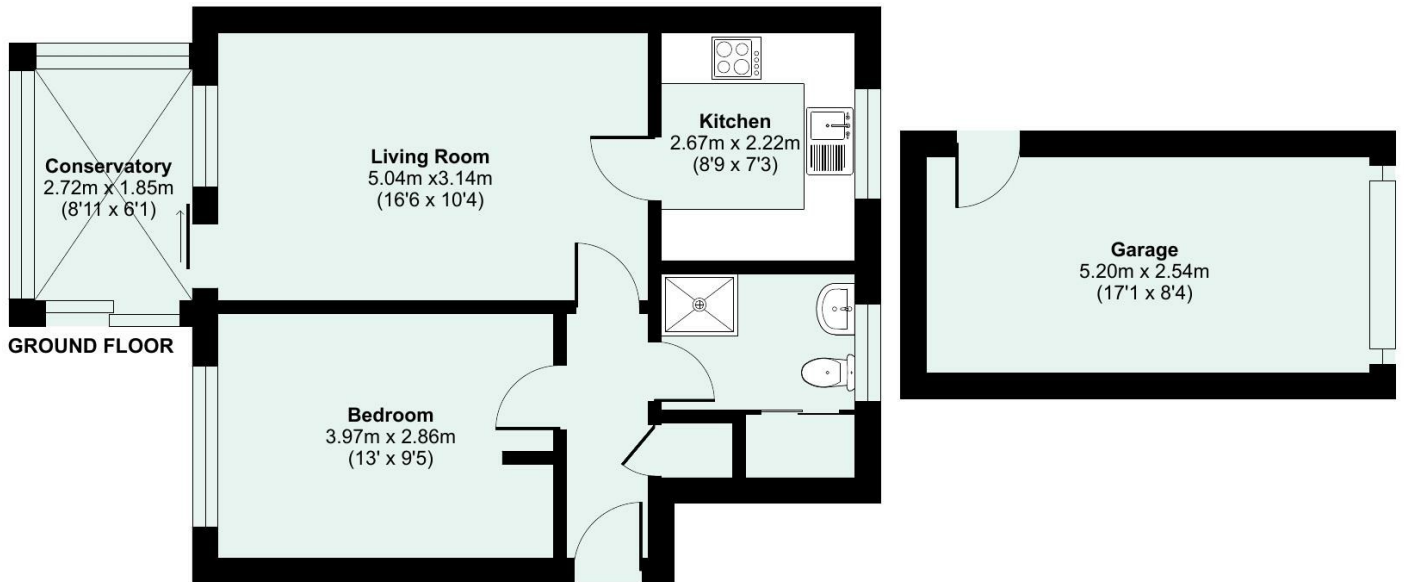
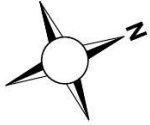
Viewings

Viewings by arrangement only. Call 01884 253500 to make an appointment.

EPC Rating:

Energy Efficiency Rating		Current	Potential
Very energy efficient - lower running costs			
(92 plus) A			
(81-91) B			
(69-80) C		75	77
(55-68) D			
(39-54) E			
(21-38) F			
(1-20) G			
Not energy efficient - higher running costs			
England & Wales		EU Directive 2002/91/EC	

Approximate Area = 532 sq ft / 49.4 sq m
Garage = 142 sq ft / 13.1 sq m
Total = 674 sq ft / 62.5 sq m
For identification only - Not to scale



 Floor plan produced in accordance with RICS Property Measurement 2nd Edition, Incorporating International Property Measurement Standards (IPMS2 Residential). © nichecom 2026. Produced for Seddon Estate Agents LLP. REF: 1470388



[seddons.com](https://www.seddons.com)

Seddons is a trading name for both Seddon Estate Agents LLP (Company Number: OC302140) and Seddons Lettings Ltd (Company Number: 10248978)
Registered in England. Registered Office: 8 Fore Street, Tiverton, Devon, EX16 6LH.
Partners and Directors of both companies: Rob Hann, Dan Barclay, Emerald Seddon-Davey


seddons

Whilst every attempt is made to ensure our sales particulars are fair and accurate, they are only a general guide to the property and must not be relied on. Please qualify any specific points of interest with Seddons.