



[www.kings-group.net](http://www.kings-group.net)

248 Hoe Street  
Walthamstow E17 3AX  
Tel: 020 8521 1122

Beaumans Drive, London, E17 5FQ  
Asking Price £460,000

Nestled in the desirable Beaumans Drive, London, this charming terraced house offers a perfect blend of modern living and comfort. Built in 2016, the property spans an impressive 1,098 square feet and is presented to the market chain free, making it an ideal choice for those looking to move in without delay.

The home features a well-designed split-level layout, providing a sense of space and privacy. With three generously sized bedrooms, it is perfect for families or those seeking extra room for guests or a home office. The property benefits from one bathroom and one WC.

The property benefits from being walking distance to local shops, Beaumans Drive is easy access to the A406 and one bus journey from Blackhorse Road Station.

The reception room is a welcoming space, ideal for entertaining or relaxing after a long day. The modern development is situated just a short walking distance from the picturesque Lloyd Park, offering a lovely green space for leisurely strolls, picnics, or outdoor activities.

This property is not only a beautiful home but also a fantastic investment in a vibrant area of London. With its modern features and prime location, it is sure to attract interest from a variety of buyers. Do not miss the opportunity to make this delightful house your new home.



### Hallway

5'9" x 7'8" (1.76 x 2.35)

### Reception

18'9" x 20'11" (5.72 x 6.39)

### WC

4'6" x 7'7" (1.39 x 2.33)

### First Floor Landing

4'1" x 15'11" (1.26 x 4.86)

### Bathroom

6'9" x 7'8" (2.08 x 2.35)

### Kitchen

10'7" x 17'11" (3.25 x 5.48)

### Bedroom One

11'6" x 13'5" (3.51 x 4.10)

### Bedroom Two

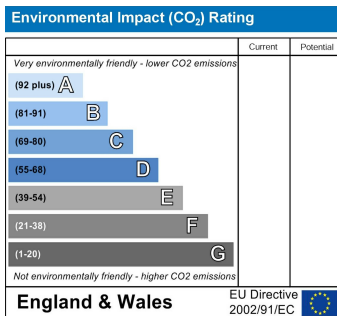
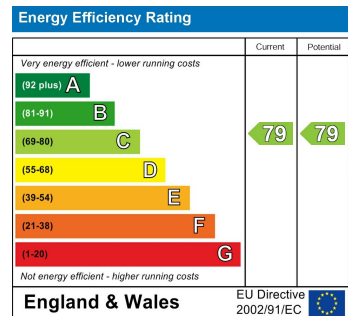
7'8" x 18'5" (2.36 x 5.62)

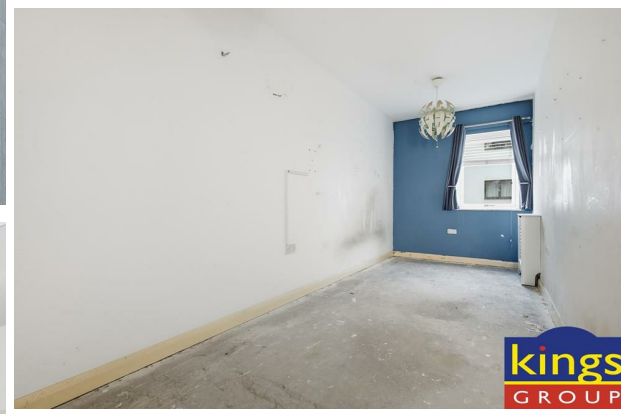
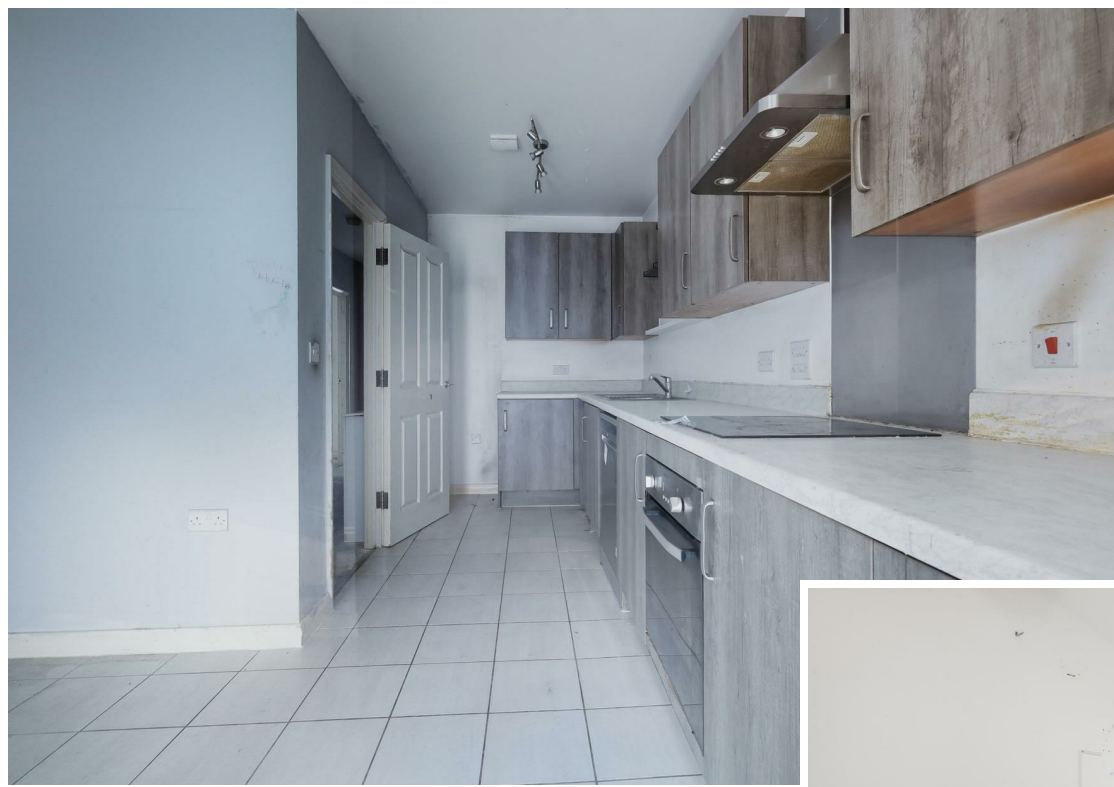
### Bedroom Three

7'9" x 12'2" (2.38 x 3.73)

### Balcony

7'6" x 18'7" (2.30 x 5.67)





kings  
GROUP

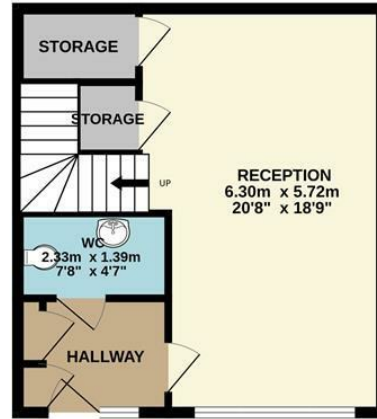
kings  
GROUP

kings  
GROUP

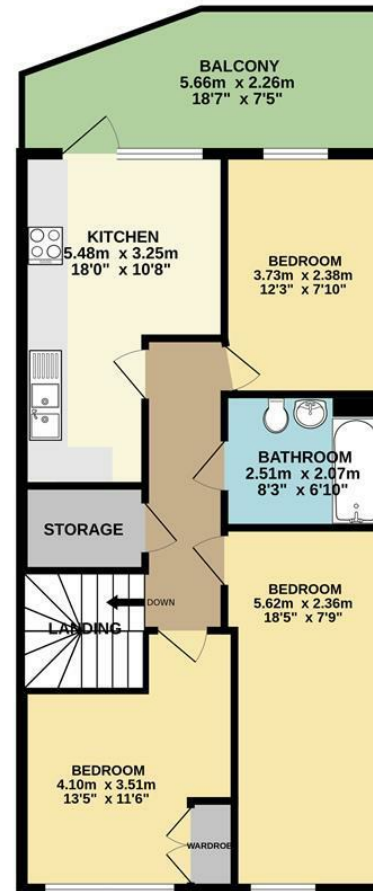
kings  
GROUP



GROUND FLOOR  
35.5 sq.m. (382 sq.ft.) approx.



1ST FLOOR  
66.5 sq.m. (716 sq.ft.) approx.



TOTAL FLOOR AREA : 102.0 sq.m. (1098 sq.ft.) approx.

Whilst every attempt has been made to ensure the accuracy of the floorplan contained here, measurements of doors, windows, rooms and any other items are approximate and no responsibility is taken for any error, omission or mis-statement. This plan is for illustrative purposes only and should be used as such by any prospective purchaser. The services, systems and appliances shown have not been tested and no guarantee as to their operability or efficiency can be given.  
Made with Metropix ©2026



Associated Offices in London, Essex and Hertfordshire  
Kings Head Office Tudor Lodge, Burton Lane, Goffs Oak, Hertfordshire EN7 6SY Tel: 01707-872000

