



**Ashbourne Road, CR4**  
**£835,000**

**Dexters**



## Ashbourne Road, CR4

A newly refurbished mid terrace home that has undergone a back to brick restoration split over three floors with a stunning interior comprising a stunning fitted kitchen with ample space for dining, a large garden, four double bedrooms, three bathrooms and a front reception room.

With an inviting exterior, the property opens onto a generous front reception room with a large round bay window and ample space for seating. To the rear, there is a wonderfully positioned fitted kitchen with wall and base units, a freestanding SMEG cooker, a breakfast island and bifolding doors that open onto a large garden. The ground floor is further balanced with a three piece shower room and a separate utility area with underfloor heating throughout.

Over the first and top floors, there are four generous double bedrooms with two bathrooms with the principal bedroom positioned on the top floor and furnished with a three piece en-suite.

Situated on a quiet residential street conveniently located within easy reach of both Tooting station & Tooting Broadway underground, Ashbourne Road is close to the green open spaces of Figges Marsh and the vast array of shops, bars and restaurants of Tooting nearby - including the popular Tooting Market.

### Features

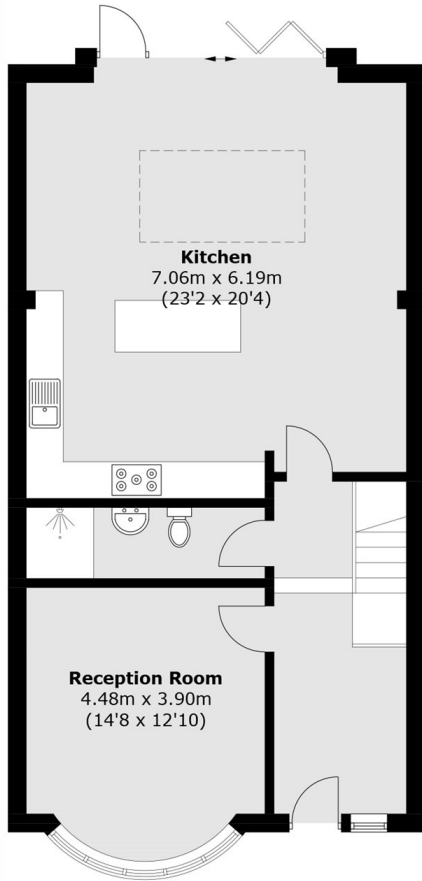
- Four Bedrooms
- Fully Renovated
- Stylish Interior
- Large Garden
- Three Bathrooms
- SMEG Appliances



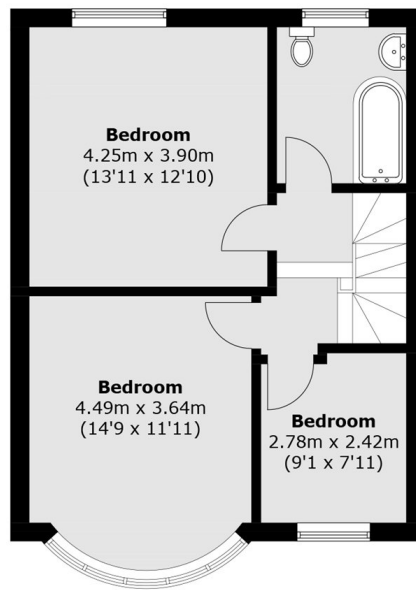




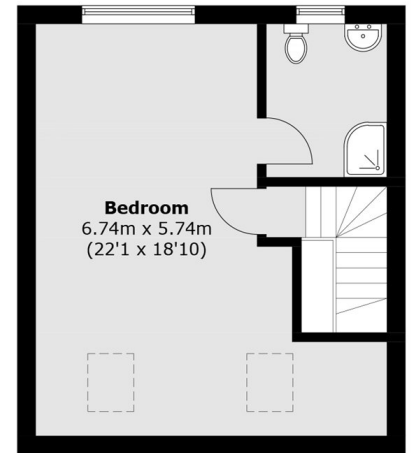
# Ashbourne Road, Mitcham, CR4



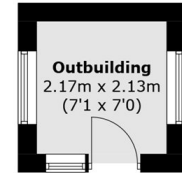
**Ground Floor**



**First Floor**



**Second Floor**



**(Not Shown In Actual  
Location / Orientation)**

Total area (approx.): 168.0 sq. m (1,808.4 sq. ft)  
Outbuilding area : 4.7 sq. m (50.6 sq. ft)