



Brunswick Terrace

Hove, BN3 1HA

Asking price £265,000

A well-presented one-bedroom apartment positioned within the iconic Brunswick Terrace, one of Hove's most recognisable seafront addresses.

The accommodation extends to approximately 409 sq ft and offers a practical layout comprising a separate kitchen, living/dining room, bedroom and bathroom. The living space is neutrally presented with a clean finish, allowing a purchaser to move straight in while still offering scope to personalise over time.

The kitchen is positioned separately from the main reception room and provides fitted units, worktop space and integrated cooking facilities. The bedroom is a good size, with a built-in wardrobe and space for free-standing furniture, while the bathroom is conveniently located between the living area and bedroom.

Brunswick Terrace is a landmark address, set directly by Hove seafront and the promenade, with the beach, lawns and coastal walks just moments away. Church Road, Western Road and central Brighton are also easily accessible, offering an excellent range of cafés, restaurants, shops and transport links.

This would make an ideal first-time purchase, second home, weekend retreat or investment opportunity in one of Hove's most desirable seafront locations.

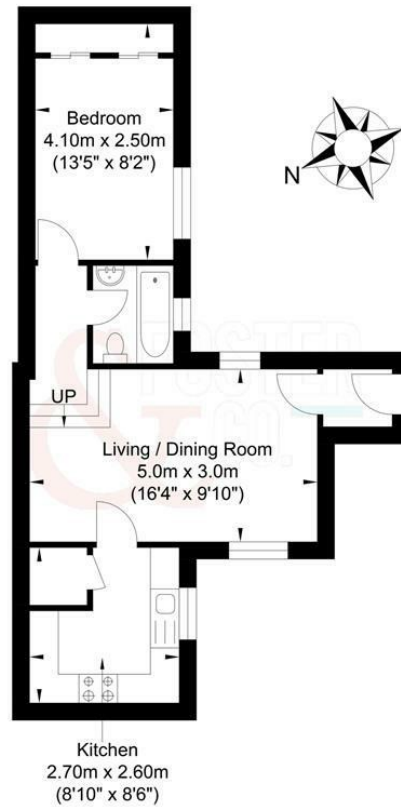
NB: Some internal photos have been enhanced using CGI.



- Brunswick Terrace
- 1 Bedroom
- Separate Kitchen
- EPC = C
- Ideal first purchase, investment or second home
- Ground Floor Rear Flat
- Bathroom
- Great Location
- Council Tax Band B
- Excellent access to Church Road, Western Road and Brighton city centre

Energy Efficiency Rating		Current	Potential
Very energy efficient - lower running costs			
(92 plus) A			
(81-91) B			
(69-80) C			
(55-68) D		73	81
(39-54) E			
(21-38) F			
(1-20) G			
Not energy efficient - higher running costs			
England & Wales		EU Directive 2002/91/EC	

Brunswick Terrace, Hove



Approximate Floor Area
408.59 sq ft
(37.96 sq m)

Approximate Gross Internal Area = 37.96 sq m / 408.59 sq ft
Illustration for identification purposes only, measurements are approximate, not to scale.
Copyright GDImpact 2020

Foster & Co and their clients give notice that:

These sales particulars do not constitute any part of an offer of contract and are for guidance for prospective purchases only and should be not relied upon as a statement of fact.

We are not to be held responsible for material information that has not been given to us by our client at the time of marketing.

All measurements are approximate



