



Hamlet Gardens, W6

£1,100,000

This sprawling, end of building lateral mansion flat measures in at 1138 sq ft and comes complete with three bedrooms, two bathrooms, a large, separate reception room and a kitchen diner.

Hamlet Gardens is close to Ravenscourt Park and a short distance to all amenities of Stamford Brook, Chiswick High Road and the riverside.

Features

- Three Bedrooms
- Two Bathrooms
- Lateral Apartment
- Abundance Of Natural Light
- Share Of Freehold
- Chain Free

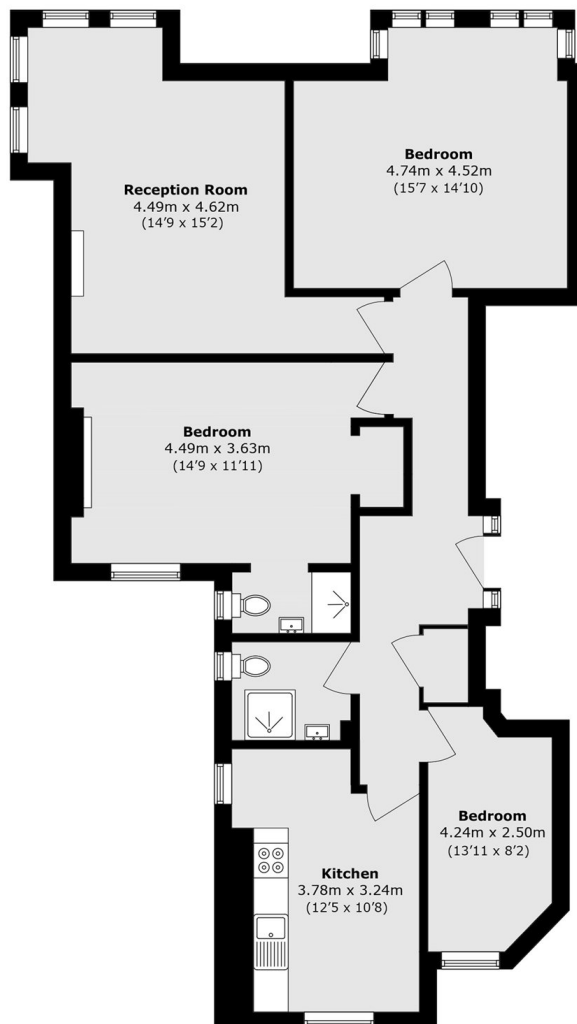


Hamlet Gardens, W6

The flat has been fully renovated and remodelled to a very high standard and offers an abundance of natural light from its position in the building. The flat further benefits from a share of freehold as well as being sold chain free.



Hamlet Gardens, London, W6



Total area (approx.): 105.8 sq. m (1138.8 sq. ft)