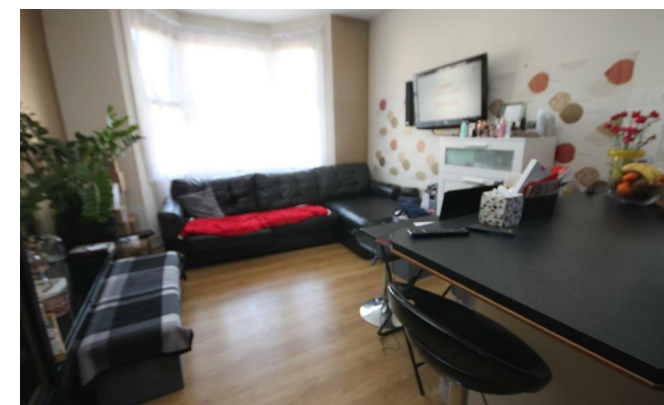
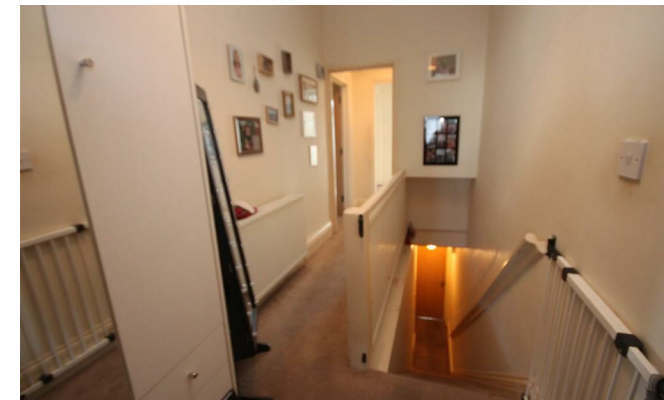


HS HAIR & SON

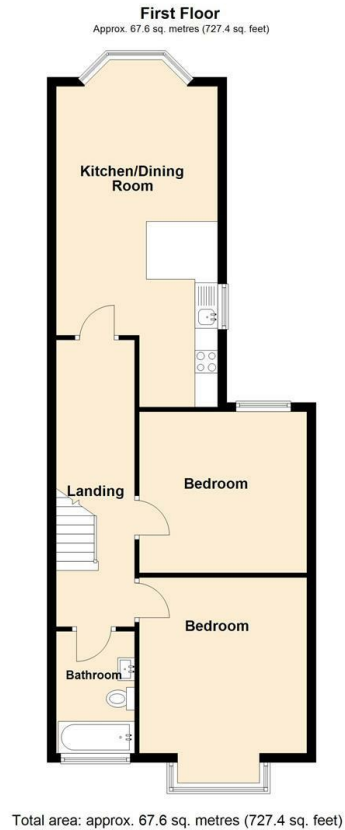


Woodgrange Drive , Southend-on-Sea SS1 2SD

- TWO DOUBLE BEDROOMS
- 26' OPEN PLAN LIVING ROOM / KITCHEN
- GAS CENTRAL HEATING
- NEW 199 YEAR LEASE
- OFF ROAD PARKING
- DOUBLE GLAZED
- VERY LARGE LAYOUT

Guide Price £195,000 Leasehold

Local Authority **Southampton City Council**
Council Tax Band **B**
EPC Rating



Sales Office
190 London Road, Southend-On-Sea,
Essex, SS1 1PJ

Contact
01702 34 11 77
<https://hairandson.co.uk/>

Agents Note: Whilst every care has been taken to prepare these particulars, they are for guidance purposes only. All measurements are approximate and for general guidance purposes only and whilst every care has been taken to ensure accuracy, they should not be relied upon and potential buyers/tenants are advised to recheck the measurements.

