

# Frank Harris & Co.



## Dudley Court, WC2H

£1,000,000

Introducing this centrally located three bedroom property in the heart of Covent Garden, just around the corner from the iconic Seven Dials in London's West End. Set over two floors, the home offers three spacious bedrooms and three bathrooms, along with a private balcony overlooking the communal gardens.



Located less than a five-minute walk from Covent Garden Underground Station and under an eight minute walk from Holborn Underground Station, this property is perfectly positioned in London's West End. It is within walking distance of the amenities of Theatreland, Seven Dials, Covent Garden Market and the Strand, while also offering excellent access to the City.

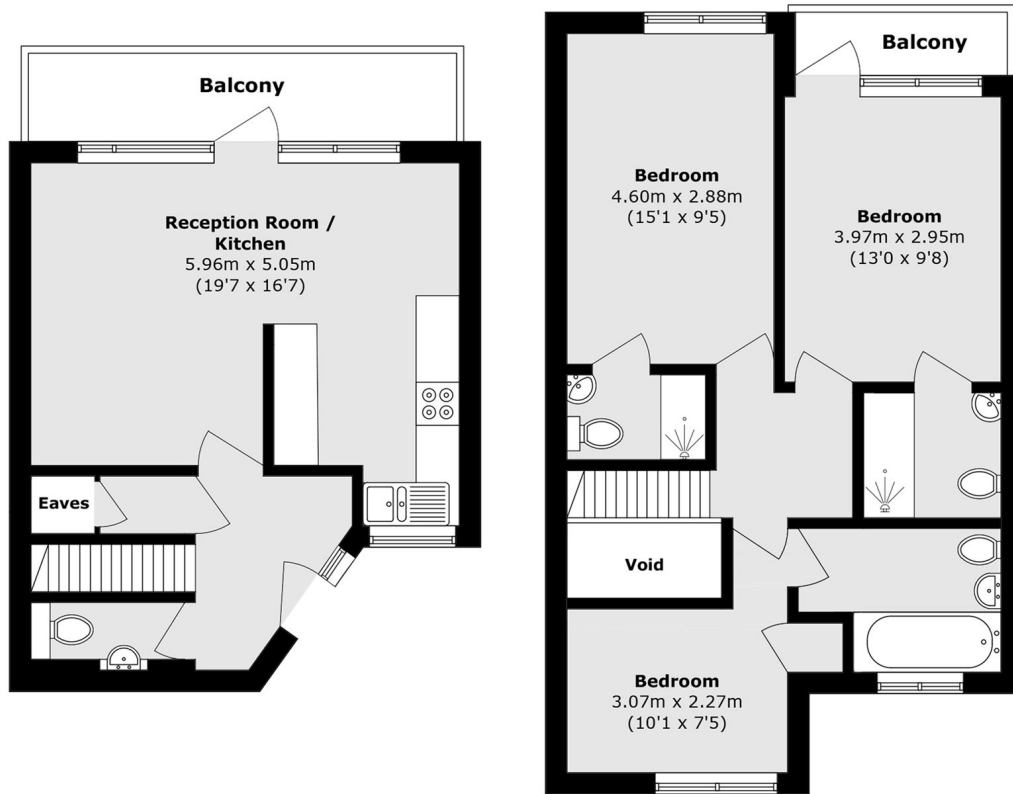
- Three Bedrooms • Three Bathrooms • Private Balcony •
- Covent Garden • Chain Free • Split Level •







# Frank Harris & Co.



**First Floor**

**Second Floor**

Total area (approx.): 85.2 sq. m (917.1 sq. ft)  
Excluding Eaves / Void

Balcony area (approx.): 9.9 sq. m (106.5 sq. ft)

Frank Harris & Co. Bloomsbury and Kings Cross  
81 Marchmont Street,  
London, WC1N 1AL  
020 7405 4444  
bloomsburysales@frankharris.co.uk

Energy Rating: . We aim to make our particulars both accurate and reliable. However they are not guaranteed; nor do they form part of an offer or contract. If you require clarification on any points then please contact us, especially if you're traveling some distance to view. Please note that appliances and heating systems have not been tested and therefore no warranties can be given as to their good working order.

