



Connells

Westfield
Sherborne



Property Description

Situated in the sought-after town of Sherborne, this well-presented three-bedroom end-of-terrace home offers comfortable and versatile accommodation, ideal for families, professionals or those looking to enjoy town living with outdoor space.

The ground floor comprises a welcoming lounge, a spacious kitchen/diner ideal for both everyday living and entertaining, and a convenient cloakroom.

To the first floor are three well-proportioned bedrooms served by a modern family bathroom.

Outside, the property benefits from gardens to both the front and rear. The rear garden features a patio area for al fresco dining, with the remainder laid to lawn, providing an excellent space for relaxation and play. Additional features include a shed to the side and a timber summer house, offering useful storage and flexible outdoor workspace.

Positioned within easy reach of Sherborne's amenities, schools and transport links, this home combines practical living with an attractive setting in a highly desirable location.

Lounge

Double glazed window to the front, double glazed doors to the front and rear, two cupboards, television aerial socket and a radiator.

Kitchen

Double glazed window to the rear, fitted kitchen with wall and base units, work surfaces, stainless steel sink and drainer, gas cooker point and a cooker hood.

Cloakroom

WC, wash hand basin and the wall mounted gas central heating boiler.

Landing

Access to the loft and a storage cupboard.

Bedroom One

Double glazed window to the rear and a radiator.

Bedroom Two

Double glazed window to rear and a radiator.

Bedroom Three

Double glazed window to the front and a radiator.

Bathroom

Two double glazed windows to the rear, P shaped bath with centre taps and a shower attachment, wash hand basin, WC and a heated towel rail.

Front Garden

To the front the garden is laid to lawn with a path leading to the front door and a shed to the side.

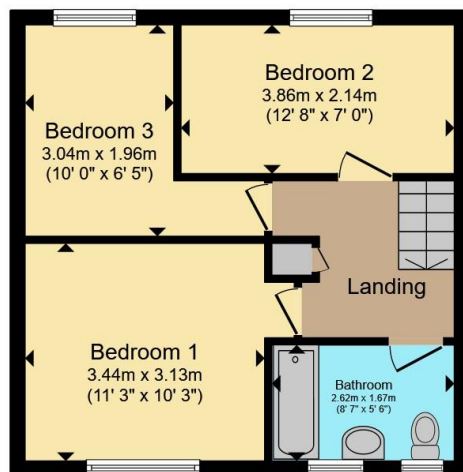
Rear Garden

The rear garden is laid to lawn with a timber summer house, gate to the side and an outside tap and power.

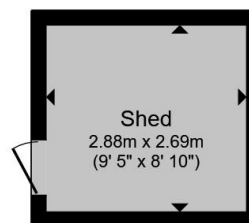




Ground Floor



First Floor



Outbuilding



Total floor area 85.0 m² (915 sq.ft.) approx

This floor plan is for illustrative purposes only. It is not drawn to scale. Any measurements, floor areas (including any total floor area), openings and orientation are approximate. No details are guaranteed, they cannot be relied upon for any purpose and they do not form part of any agreement. No liability is taken for any error, omission or misstatement. A party must rely upon its own inspection(s). Powered by www.propertybox.io



To view this property please contact Connells on

T 01935 812 155

E sherborne@connells.co.uk

92 Cheap Street
SHERBORNE DT9 3BJ

EPC Rating: Council Tax
Awaited Band: C

view this property online connells.co.uk/Property/SHR303712

Tenure: Freehold



1. MONEY LAUNDERING REGULATIONS Intending purchasers will be asked to produce identification documentation at a later stage and we would ask for your co-operation in order that there will be no delay in agreeing the sale. 2. These particulars do not constitute part or all of an offer or contract. 3. The measurements indicated are supplied for guidance only and as such must be considered incorrect. Potential buyers are advised to recheck measurements before committing to any expense. 4. We have not tested any apparatus, equipment, fixtures, fittings or services and it is in the buyers interest to check the working condition of any appliances.

Connells Residential is registered in England and Wales under company number 1489613, Registered Office is Cumbria House, 16-20 Hockliffe Street, Leighton Buzzard, Bedfordshire, LU7 1GN. VAT Registration Number is 500 2481 05.

See all our properties at www.connells.co.uk | www.rightmove.co.uk | www.zoopla.co.uk

Property Ref: SHR303712 - 0003