



Kilburn Gate, North Maida
Vale, NW6

Asking Price £325,000



 1  1  1  C

Kilburn Gate, North Maida Vale, NW6

Asking Price £325,000



Summary Description

A charming second floor one bedroom flat offers an inviting blend of comfort, light, and convenience.

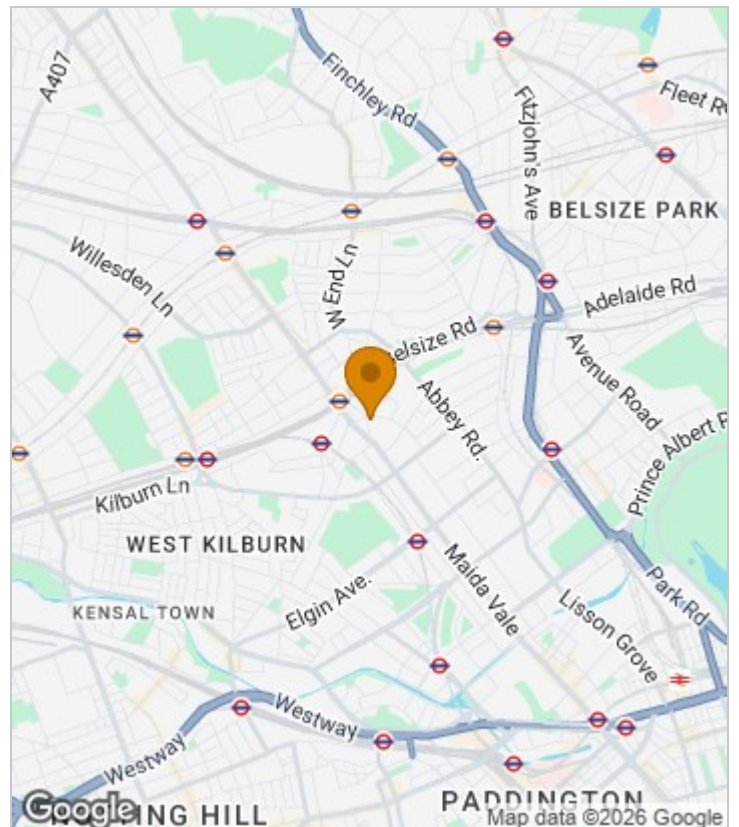
The property features a spacious & naturally bright reception room, creating a warm and welcoming atmosphere which opens onto a south-facing balcony—a delightful spot to enjoy sunny afternoons, morning coffee, or a quiet moment outdoors.

The separate kitchen is thoughtfully arranged to maximise both practicality and workspace, making it ideal for everyday cooking or weekend creativity. A modern white bathroom completes the interior, offering a clean and elegant finish.

A major advantage of this property is the lease extension currently being arranged by the owner, adding an additional 90 years—a valuable benefit for long-term peace of mind.

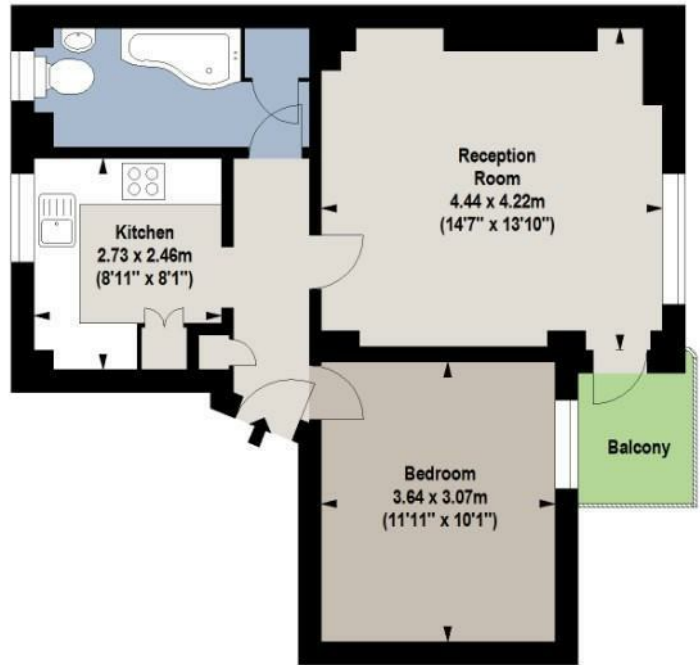
Perfectly positioned to enjoy Maida Vale's excellent local amenities, cafés, shops, and transport links, this flat is an appealing choice for first-time buyers, investors, or anyone seeking a well located London home with character.

Area Map





Floor Plan



Second Floor

For Identification Purposes Only. Not To Scale. © www.alanaiken.com 2017

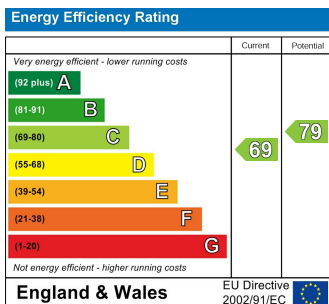


**Kilburn Gate,
Kilburn Priory, NW6**

Approx. Gross Internal Area
47.19 Sq M - 508 Sq Ft



Energy Efficiency Graph



Viewing

Please contact our Sales QP Office on 0207 604 4040 if you wish to arrange a viewing appointment for this property or require further information.

- Bright and spacious one bedroom property
- Generous reception room with purpose built southerly aspect balcony
- Separate well planned kitchen
- Offered to the market chain free
- Lease currently being extended for a further 90 years

For further information contact:

Sales QP, 2a Brondesbury Road, London, NW6 6AS

Tel: 0207 604 4040 Email: info@jorgensenturner.com <https://www.jorgensenturner.com/>

Disclaimer

These particulars, whilst believed to be accurate are set out as a general outline only for guidance and do not constitute any part of an offer or contract. Intending purchasers should not rely on them as statements of representation of fact, but must satisfy themselves by inspection or otherwise as to their accuracy. No person in this firm's employment has the authority to make or give any representation or warranty in respect of the property.