

**3 Bed
Flat
located in**

AiHOMES.

Modern 3B2B Apartment
| Wharf Road |
Chelmsford CM2|
10585WR



£410,000

Welcome to this modern three-bedroom, two-bathroom apartment located on Wharf Road in the heart of Chelmsford, CM2. Spanning an impressive 979 square feet, this flat offers a spacious and contemporary living environment, perfect for families or professionals seeking comfort and convenience.

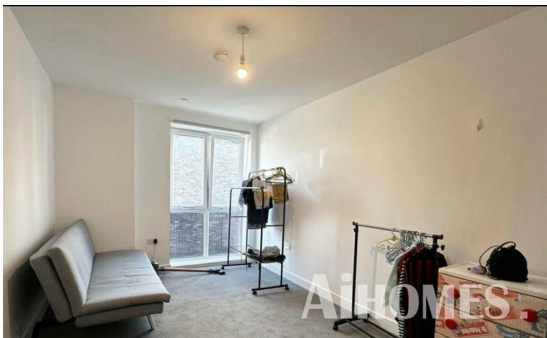
As you enter the apartment, you are greeted by a bright and airy open-plan living area that seamlessly combines the lounge and dining space, ideal for entertaining guests or enjoying quiet evenings at home. The modern kitchen is well-equipped, providing ample storage and workspace for culinary enthusiasts.

The three bedrooms are generously sized, allowing for flexibility in use, whether as guest rooms, a home office, or children's bedrooms. The two bathrooms are stylishly designed, ensuring that both residents and visitors have access to modern facilities.

Situated in a desirable location, this apartment benefits from excellent transport links and local amenities, making it an ideal choice for those who appreciate urban living with a touch of tranquility. Chelmsford offers a vibrant community with shops, restaurants, and parks, all within easy reach.

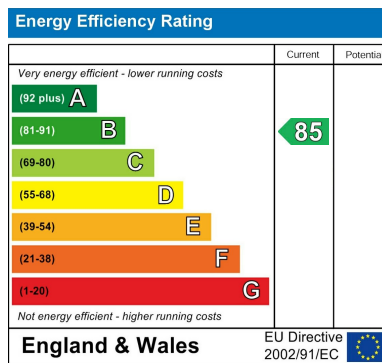
This property presents a fantastic opportunity for anyone looking to invest in a modern home in a thriving area. Do not miss the chance to make this delightful apartment your own.





Modern 3B2B Apartment | Wharf Road | Chelmsford
CM21 10585WB

EPC Rating: B
Council Tax Band: E



CONTACT

5th floor, Empress Business Center
380 Chester Road
Manchester
M16 9EA

E: info@aihomes.uk

T: 0127 332 8069

AiHOMES.