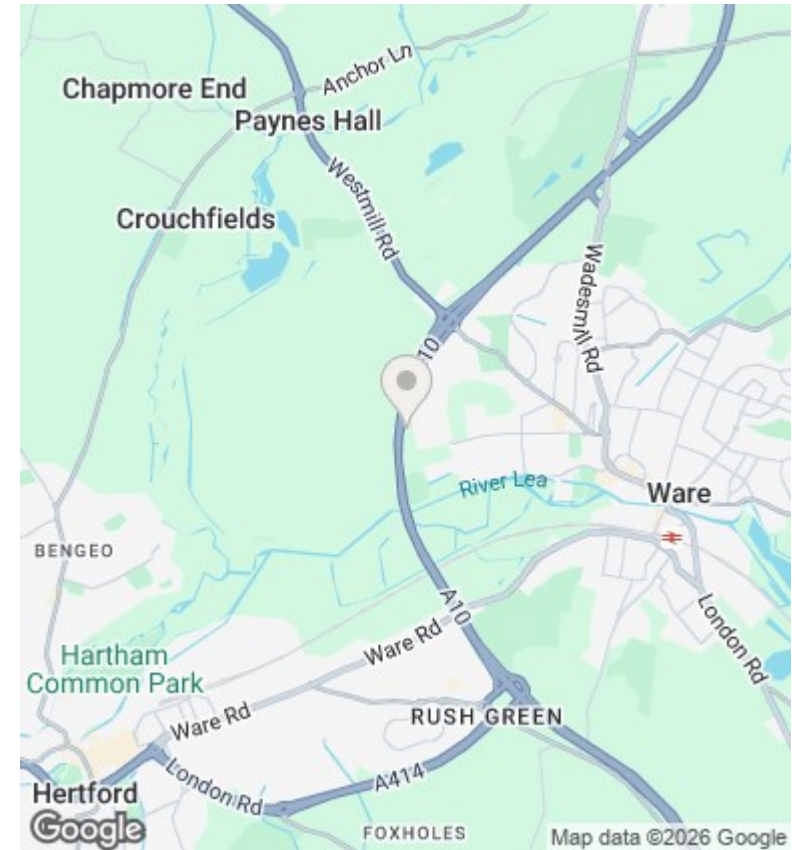
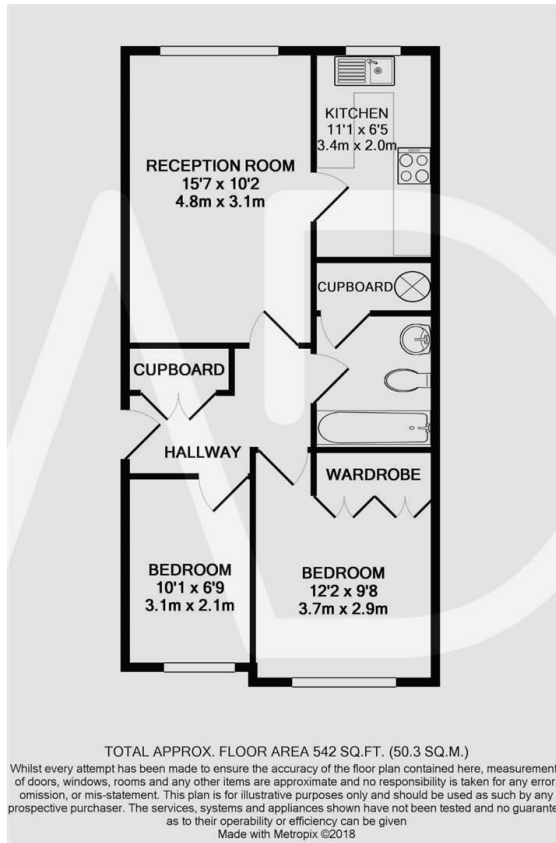




110 Trapstyle Road, Ware, Hertfordshire, SG12 0BX

£1,250 PCM

- TWO BEDROOM
- KITCHEN AND WHITE GOODS
- GROUND FLOOR FLAT
- PARKING
- LARGE RECEPTION



Directions

Viewings

Viewings by arrangement only. Call 01992 470335 to make an appointment.

Council Tax Band

B

EPC Rating:

D

