



GINGER COW
ESTATE AGENTS

01234 860215

Harlequin Crescent, Wixams

£375,000

3 3

Situated on the popular Harlequin Crescent within the sought-after Willow Grove development, this beautifully presented three-bedroom semi-detached home offers spacious accommodation arranged over three floors. A rare feature of this style of property is the provision of three genuine double bedrooms, including an impressive top-floor principal suite with fitted wardrobes and a stylish en-suite shower room. The ground floor features a welcoming entrance hall, cloakroom, spacious bay-fronted living room, and a contemporary kitchen/dining room with French doors opening onto the landscaped rear garden. Outside, a generous side driveway provides ample off-road parking and leads to a single garage. Combining modern styling, practical living space and a superb location close to schools, green spaces and amenities, this is an excellent family home ready to move straight into.

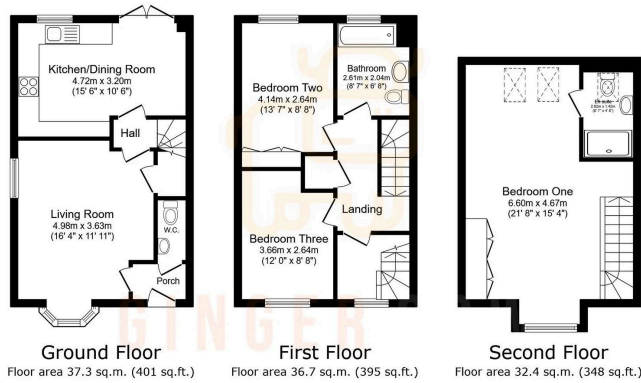


Floor Area: 1144 sq. ft.

Tenure: Freehold

Service Charge: £0 per annum

Ground Rent: £0 per annum



TOTAL: 106.3 sq.m. (1,144 sq.ft.)

This floor plan is for illustrative purposes only. It is not drawn to scale. Any measurements, floor areas (including any total floor area), coverings and orientations are approximate. No details are guaranteed. They cannot be relied upon for any purpose and do not form any part of any agreement. The liability is based for any error, omission or misstatement. A party must rely upon its own inspection(s). Powered by www.propertybox.co.uk

