



17 Willow Close
Kettering, NN14 2QH



Simpson Ellson

Spacious Extended Three/Four Bedroom Semi-Detached Home

Situated within a quiet and sought-after close in Desborough, Kettering, this extended three-bedroom semi-detached property offers generous and versatile living accommodation, ideal for growing families or those seeking multi-generational living.

The ground floor has been thoughtfully extended to provide an additional room, offering flexibility as a fourth bedroom, family room, or home office. This space is complemented by a convenient ground floor wet room with WC, adding practicality and potential for independent living arrangements.

Upstairs, the property features three well-proportioned bedrooms and a family bathroom. The overall layout provides excellent scope to create a comfortable and contemporary family home.

Externally, the property enjoys a peaceful setting within the close, with the benefit of a private garden and off-road parking.

While the home requires modernisation throughout, it presents a fantastic opportunity for buyers to put their own stamp on the property and add significant value.

Located within easy reach of local amenities, schools, and transport links, this is a superb opportunity to acquire a spacious home in a desirable residential area.

£220,000



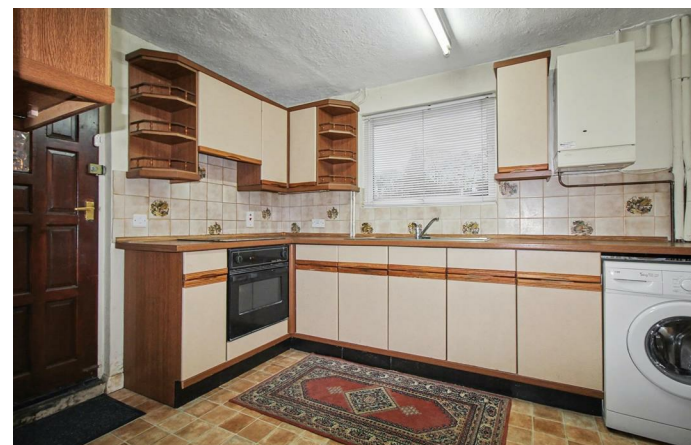
3



2

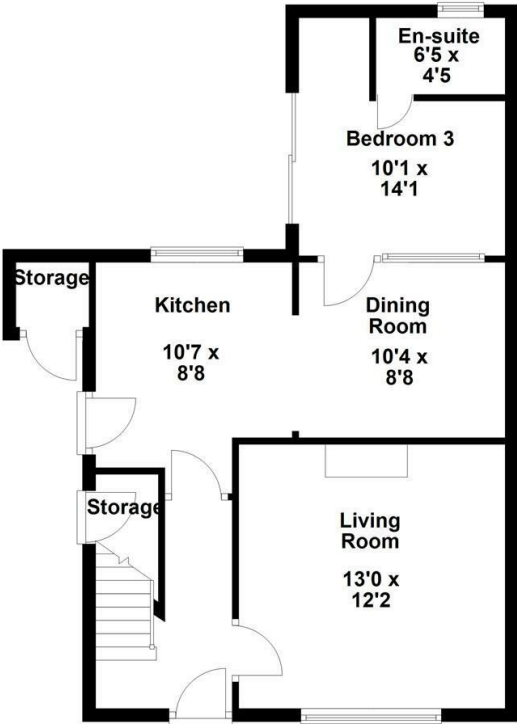


3



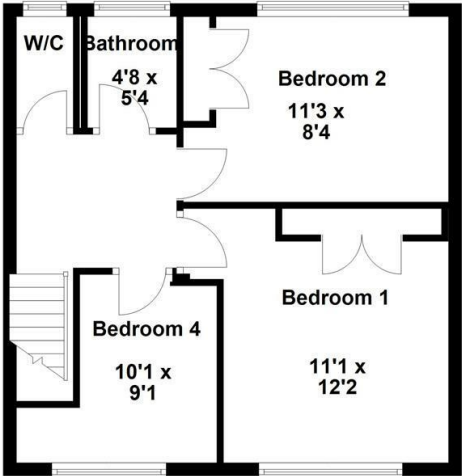
Ground Floor

Approx. 496.8 sq. feet

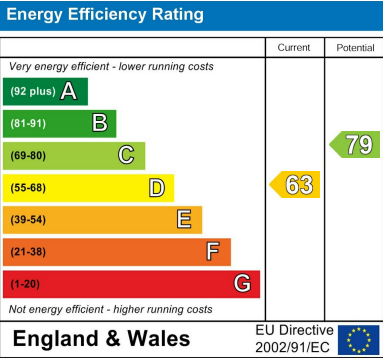


First Floor

Approx. 483.1 sq. feet



Total area: approx. 979.9 sq. feet





**Simpson
Ellson**

T: 01536 645960

E: rothwell@simpsonellson.co.uk

rothwell@simpsonellson.co.uk
<https://simpsonellson.co.uk>

32 High Street, Rothwell, Northants, NN14 6BQ

