



*jordan fishwick*

Whitelow Road  
Chorlton



## Whitelow Road Chorlton M21 9HG

£2,850 Per Calendar Month



### The Property

\*\*\*\* AVAILABLE AUGUST \*\*\*\* This beautiful four bedroom bay fronted semi detached period property is super close to Chorlton Green and Beech road. This stunning property provides spacious and light accommodation over three floors with cellar as well as off road parking for two cars. The property retains many original features and has been stylishly decorated throughout. The accommodation briefly comprises: covered porch, entrance hallway, bay fronted lounge, dining room, kitchen with separate utility and WC. To the first floor there are three double bedrooms and bathroom with four piece suite, whilst to the second floor there is an additional fourth bedroom with Ensuite. The cellar provides useful storage space. Externally the garden to the front of the property offers privacy from the street, parking for two cars and fully fenced to cover rear garden entrance, the rear garden is large with established borders, lawn, patio to the side of the house and working greenhouse. Both double glazing and gas central heating are installed.

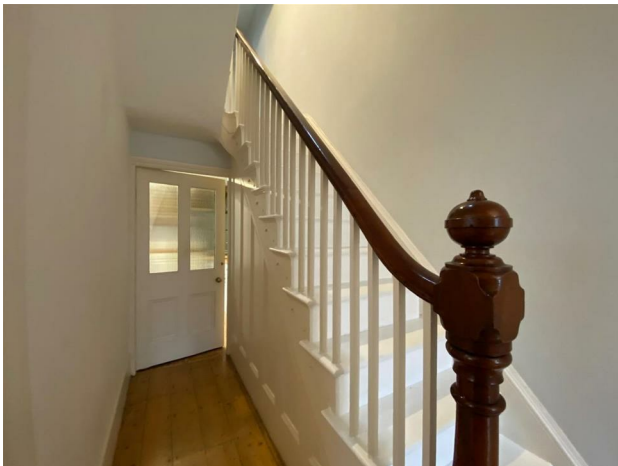
\*\*\*\*\* To arrange a viewing please call 0161 860 4444

\*\*\*\*\*

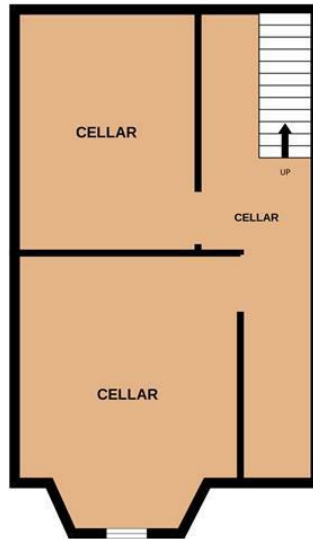
### Directions

- Council Tax Band D - EPC E
- 4 Double Bedrooms
- Large Private Rear Garden
- Superbly presented
- Part furnished
- Chorlton Green location
- Available August

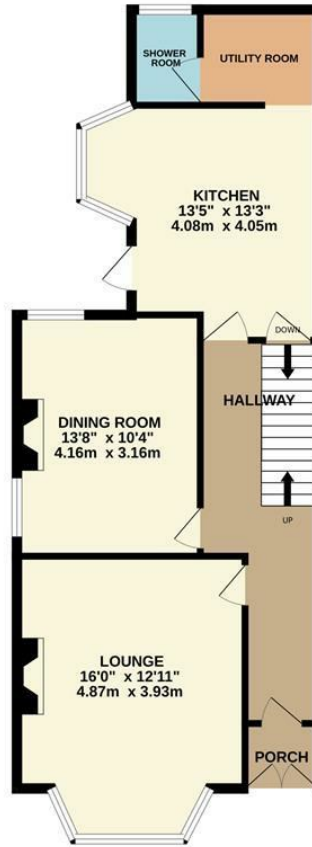
Postcode - M21 9HG  
EPC Rating - E  
Floor Area - sq ft  
Local Authority - Manchester  
Council Tax - D



BASEMENT LEVEL:  
477 sq.ft. (44.3 sq.m.) approx.



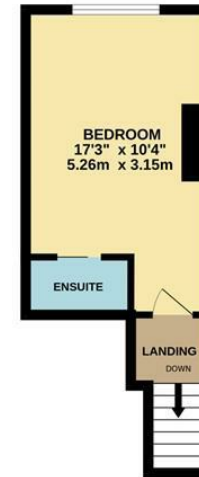
GROUND FLOOR:  
664 sq.ft. (61.7 sq.m.) approx.



1ST FLOOR:  
613 sq.ft. (57.0 sq.m.) approx.



2ND FLOOR:  
207 sq.ft. (19.2 sq.m.) approx.



TOTAL FLOOR AREA : 1962 sq.ft. (182.3 sq.m.) approx.

Measurements are approximate. Not to scale. Illustrative purposes only  
Made with Metropix ©2025