



Murray Road, W5
£1,250,000

Dexters



Murray Road, W5

An exceptional Edwardian semi detached house providing five bedrooms, two bathrooms and the potential to extend (STPP).

Also comprises entrance hall, two interconnecting reception rooms, guest WC, a well fitted kitchen/dining room and side entrance. Offered in excellent condition with a high standard of fixtures and decoration so ideal for purchasers looking for a house in turn key condition.

Outside is a generous sized, well established rear garden with a multi purpose outbuilding.

Located in this increasingly popular area close to Gunnersbury Boys School, Ealing Fields High School and Little Ealing Primary School and the Piccadilly line at both South Ealing and Northfields stations.

This excellent home enjoys lots of natural light and successfully blends period charm with modern family living so we can't wait to show you around on a viewing.

Features

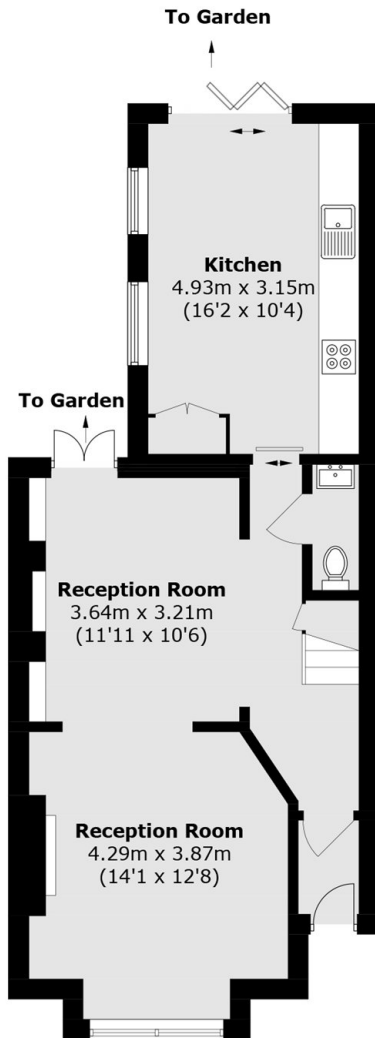
- Victorian Semi Detached
- Five Bedrooms
- Immaculate Condition
- Excellent Schools
- Rear Annex
- Popular Location



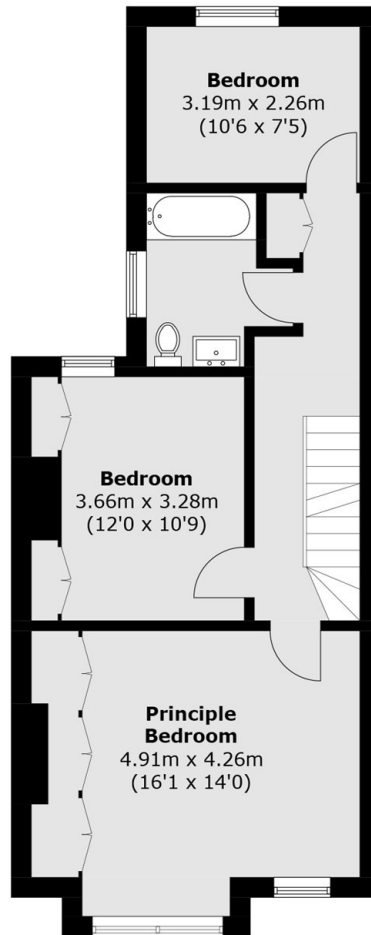




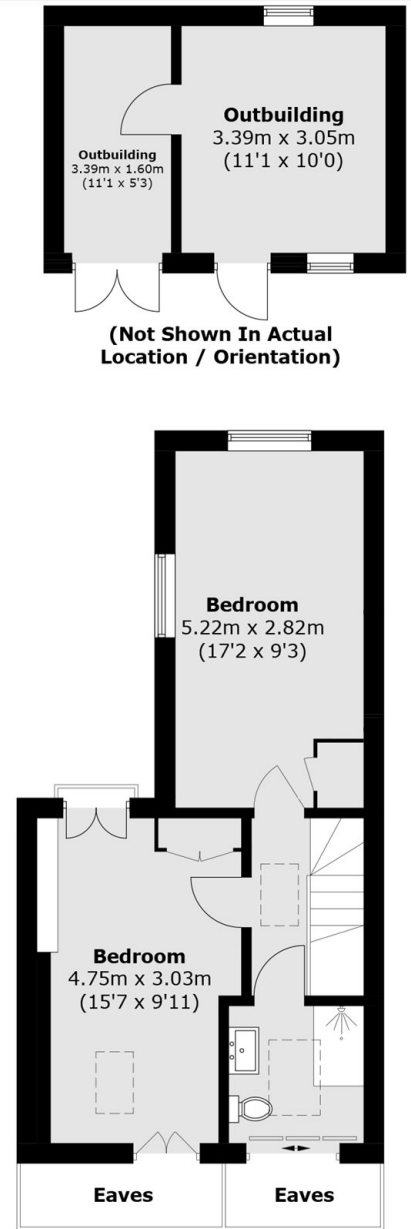
Murray Road,
London, W5



Ground Floor



First Floor



Second Floor

Total area (approx.): 148.5 sq. m (1,598.4 sq. ft)
Outbuilding: 16.6 sq. m (178.7 sq. ft)
(Excluding Eaves)