



## Coster Avenue, N4

£475,000

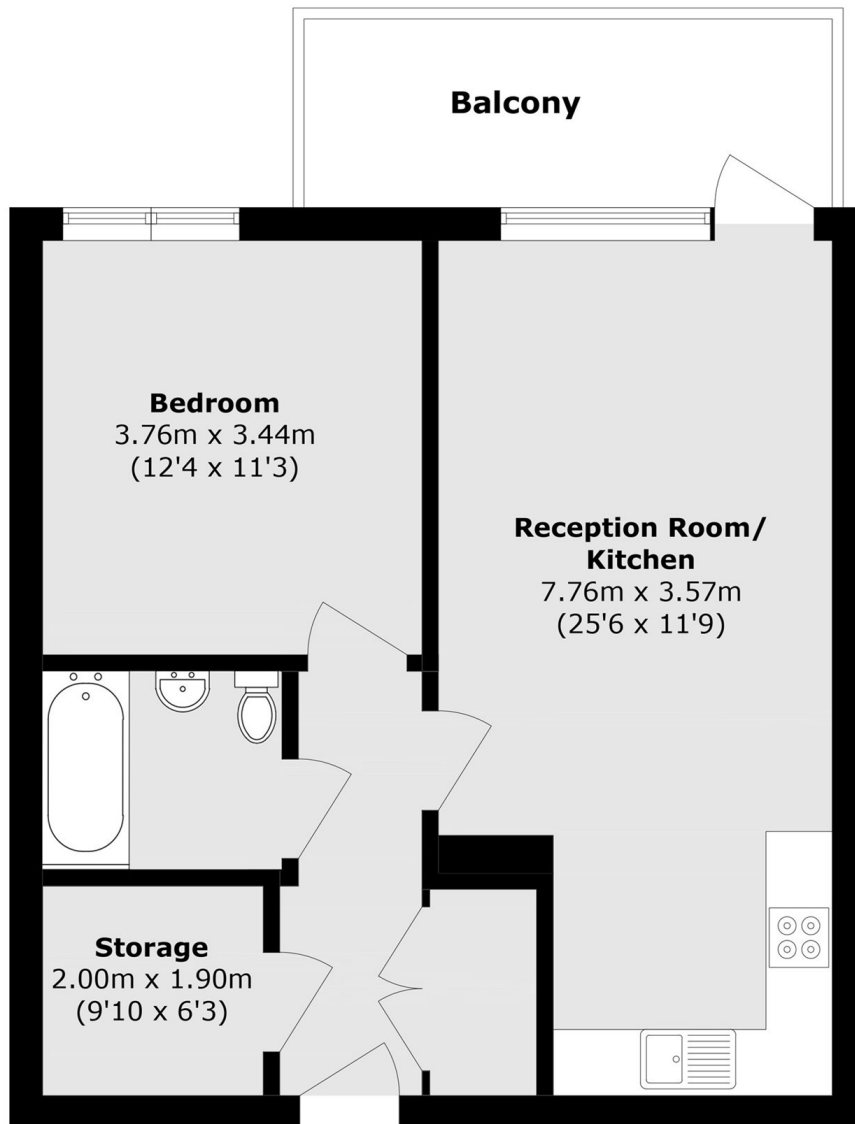
This spacious one bedroom apartment is located on the upper floor offers spectacular views. The apartment has an open plan reception/dining room/kitchen, and a private balcony.

The property is ideally located near Manor House and Finsbury Park stations, offering quick access to Central London (under 20 minutes), along with local shops, cafés, green spaces and reservoirs.

### Features

- Double Bedroom
- Spectacular Views
- Open Plan
- Private Balcony
- 24-hour Concierge
- Chain Free

# Coster Avenue, London, N4



Total area (approx.): 55.5 sq. m (597.4 sq. ft)  
Balcony area (approx.): 8.1 sq. m (87.1 sq. ft)